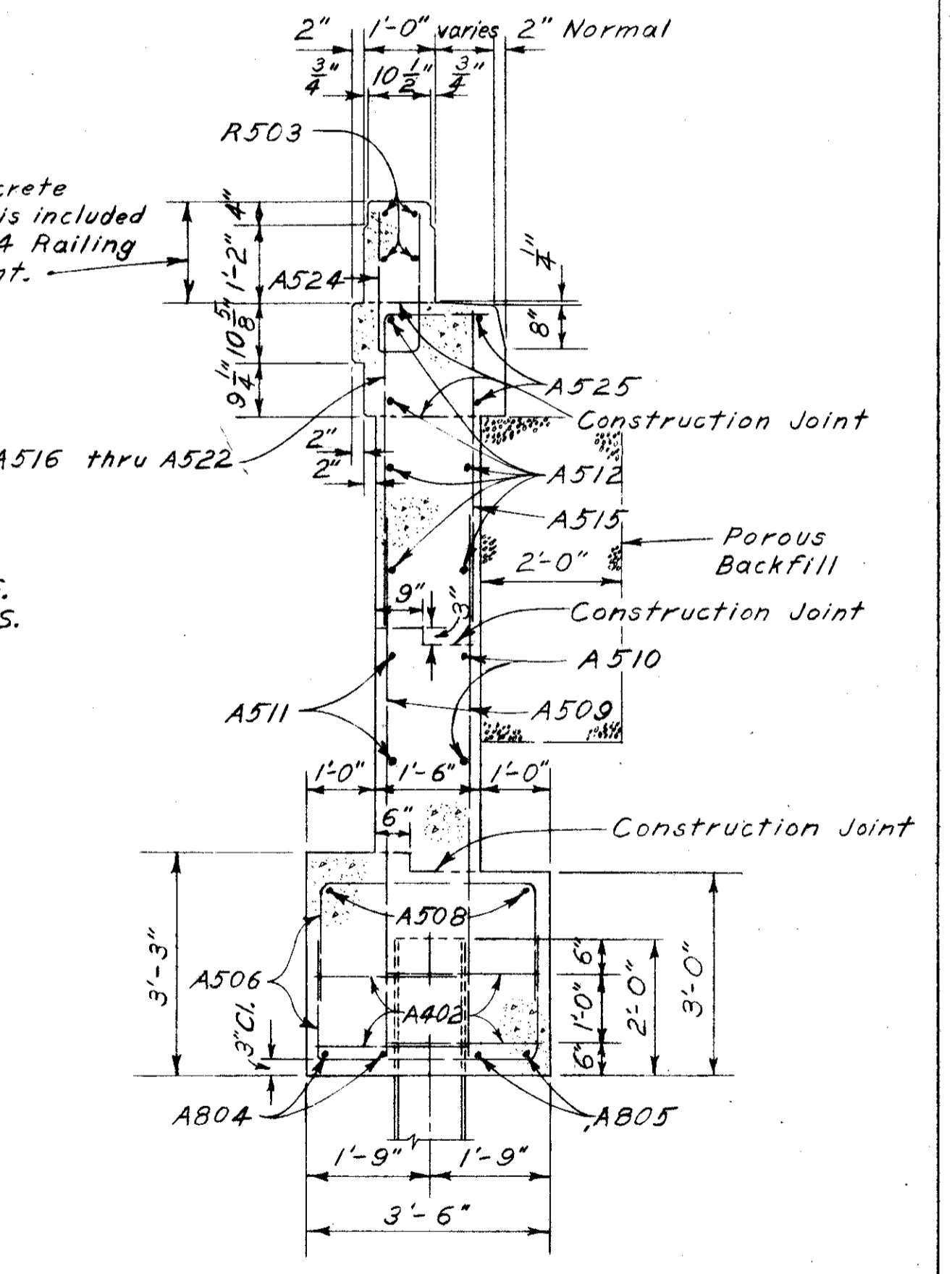
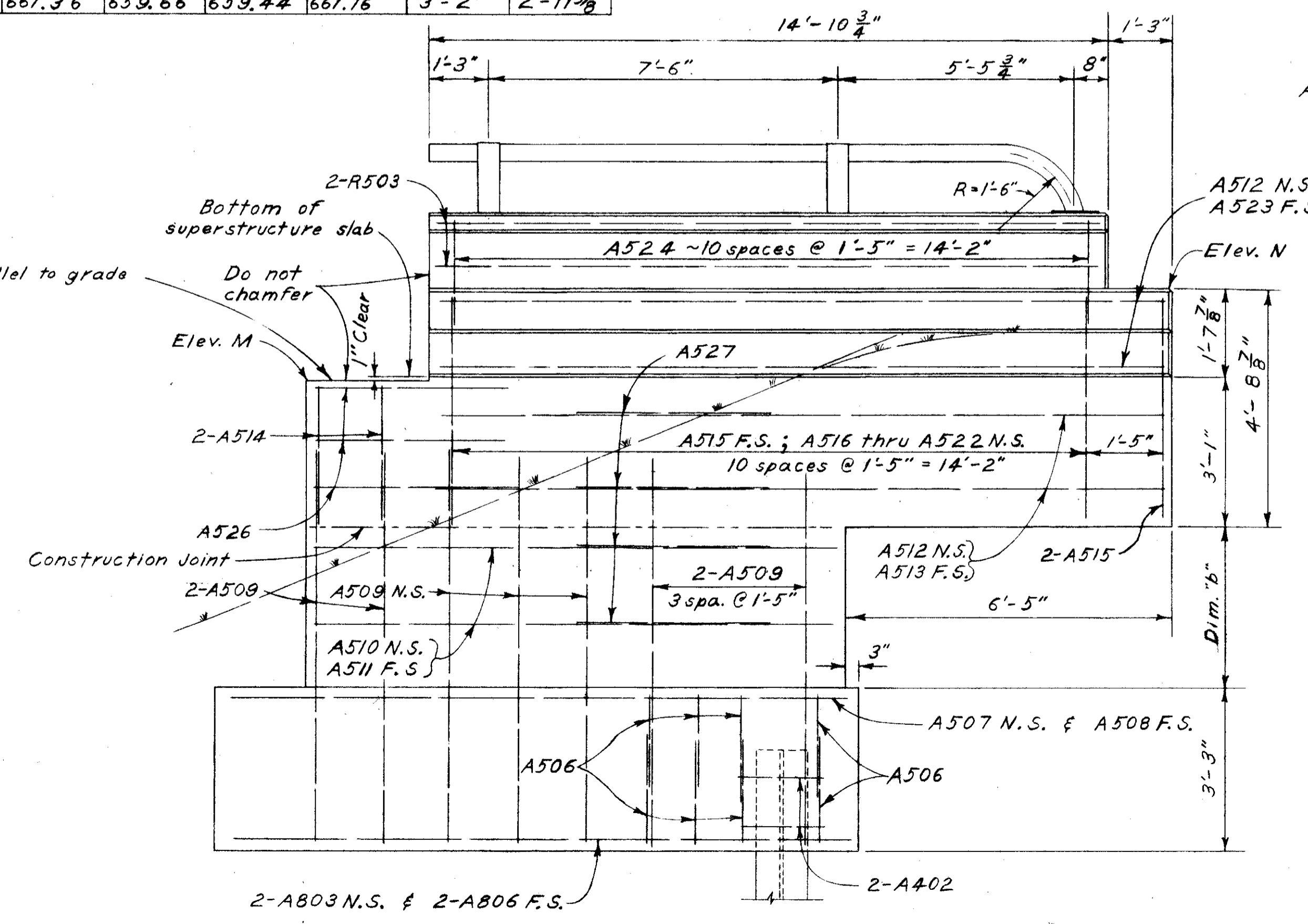
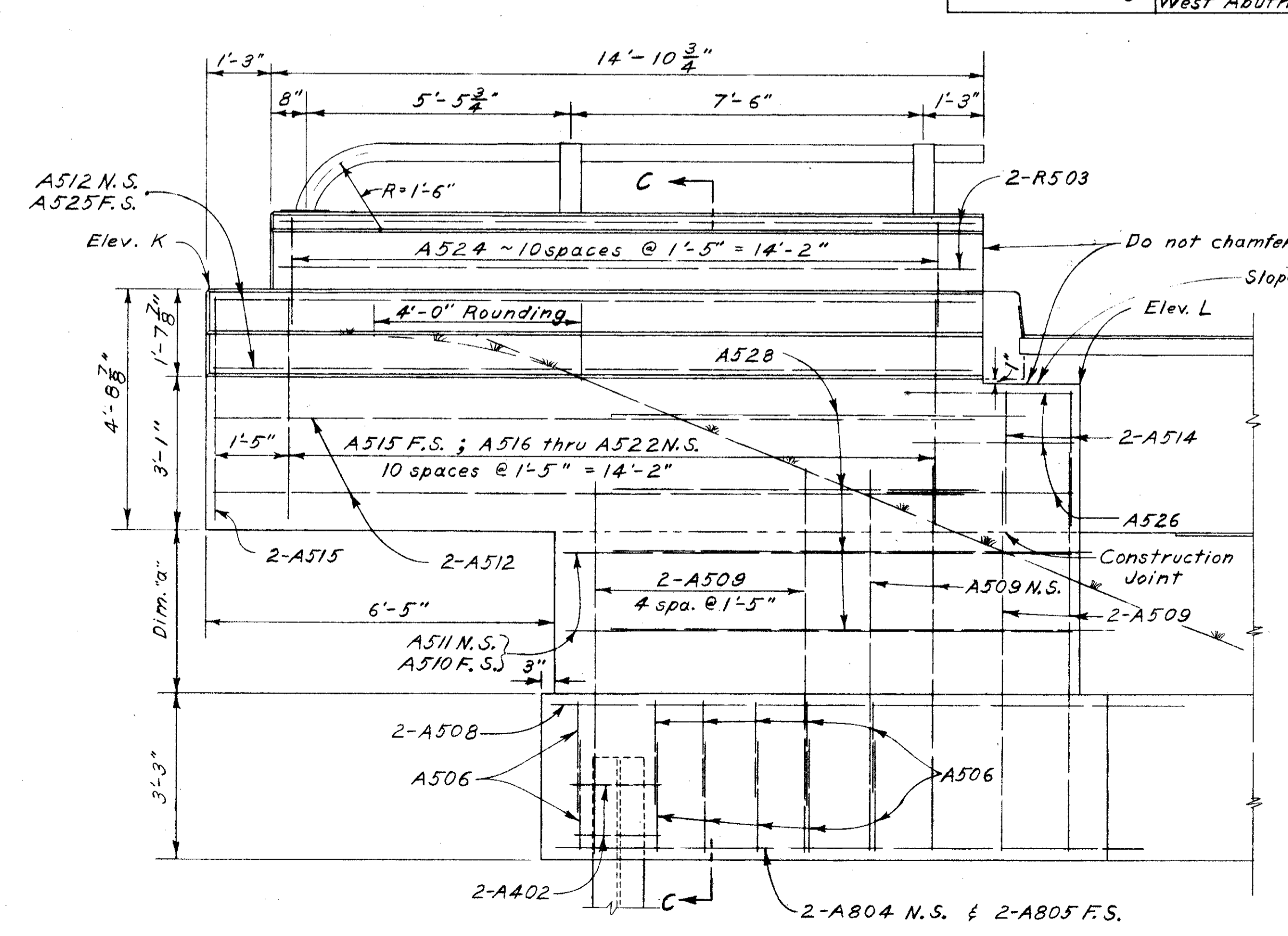


NOTES
REINFORCING STEEL: N.S. denotes Near Side
F.S. denotes Far Side
ADDITIONAL DETAILS: For guardrail
connection to end of parapet and railing
end detail see COMMON DETAILS,
Sheet No. 393A

LOCATION	ELEVATIONS				DIMENSIONS	
	Elev. K	Elev. L	Elev. M	Elev. N	Dim. "a"	Dim. "b"
Eastbound Bridge East Abutment	661.40	659.69	659.45	661.18	3'-2 1/2"	2'-11 7/8"
Westbound Bridge East Abutment	660.90	659.22	659.63	661.31	2'-8 1/2"	3'-1 1/2"
Westbound Bridge West Abutment	660.95	659.27	659.66	661.36	2'-9 1/8"	3'-2"
Westbound Bridge West Abutment	661.36	659.66	659.44	661.16	3'-2"	2'-11 3/8"



Class "C" Concrete
for parapet is included
in Item S-14 Railing
for payment.

ELEVATION ON LINE A-A

ELEVATION ON LINE B-B

SECTION C-C

STATE OF OHIO
DEPARTMENT OF HIGHWAYS
DIVISION OF DESIGN AND CONSTRUCTION
BUREAU OF BRIDGES

ABUTMENT DETAILS

BRIDGE No. LAK-2-0255 L&R
OVER CAMPBELL ROAD

LAKE COUNTY Sta. 234+69.16
Sta. 236+17.60

DESIGNED	DRAWN	TRACED	CHECKED	REVIEWED	DATE	REVISION
FFE	FFE		N.J.B.	BFG	9/27/71-28-58	