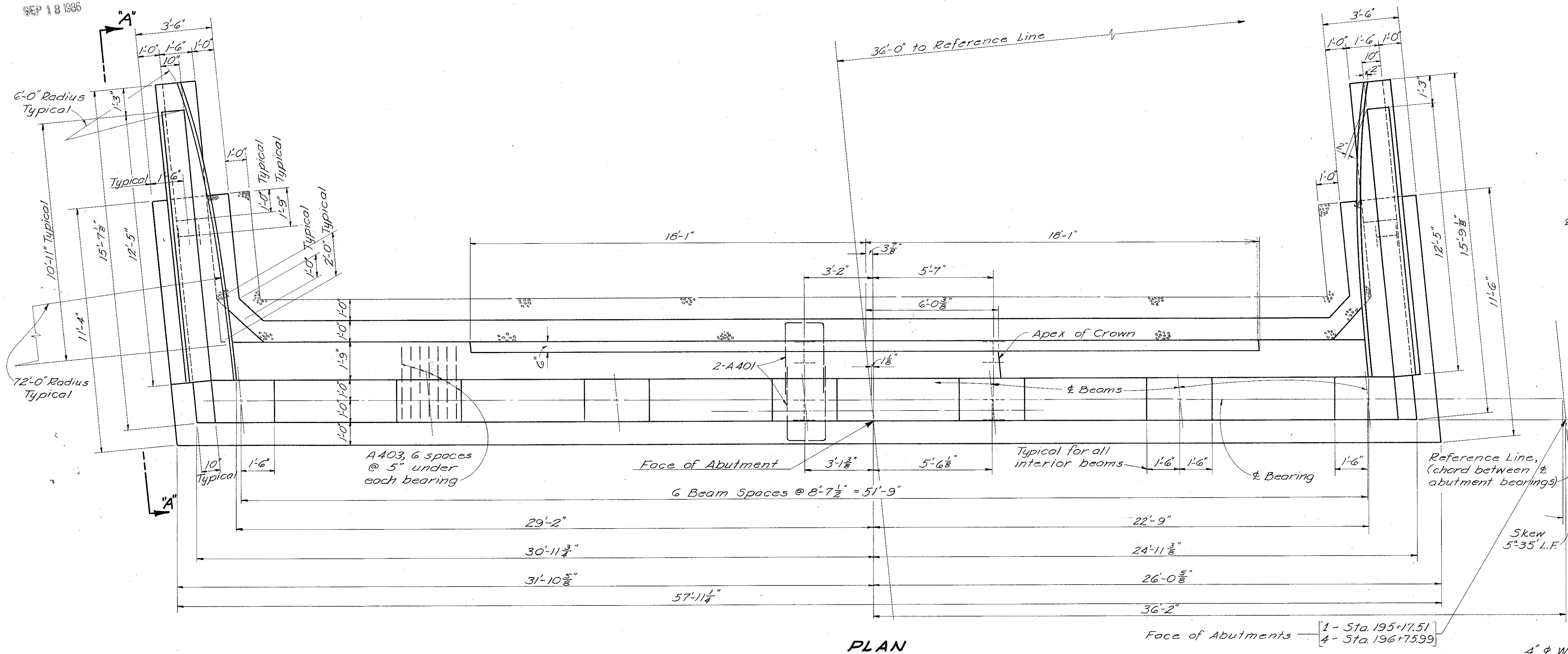


MICROFILMED
SEP 18 1986

FED. RD. DIVISION	STATE	PROJECT
2	OHIO	

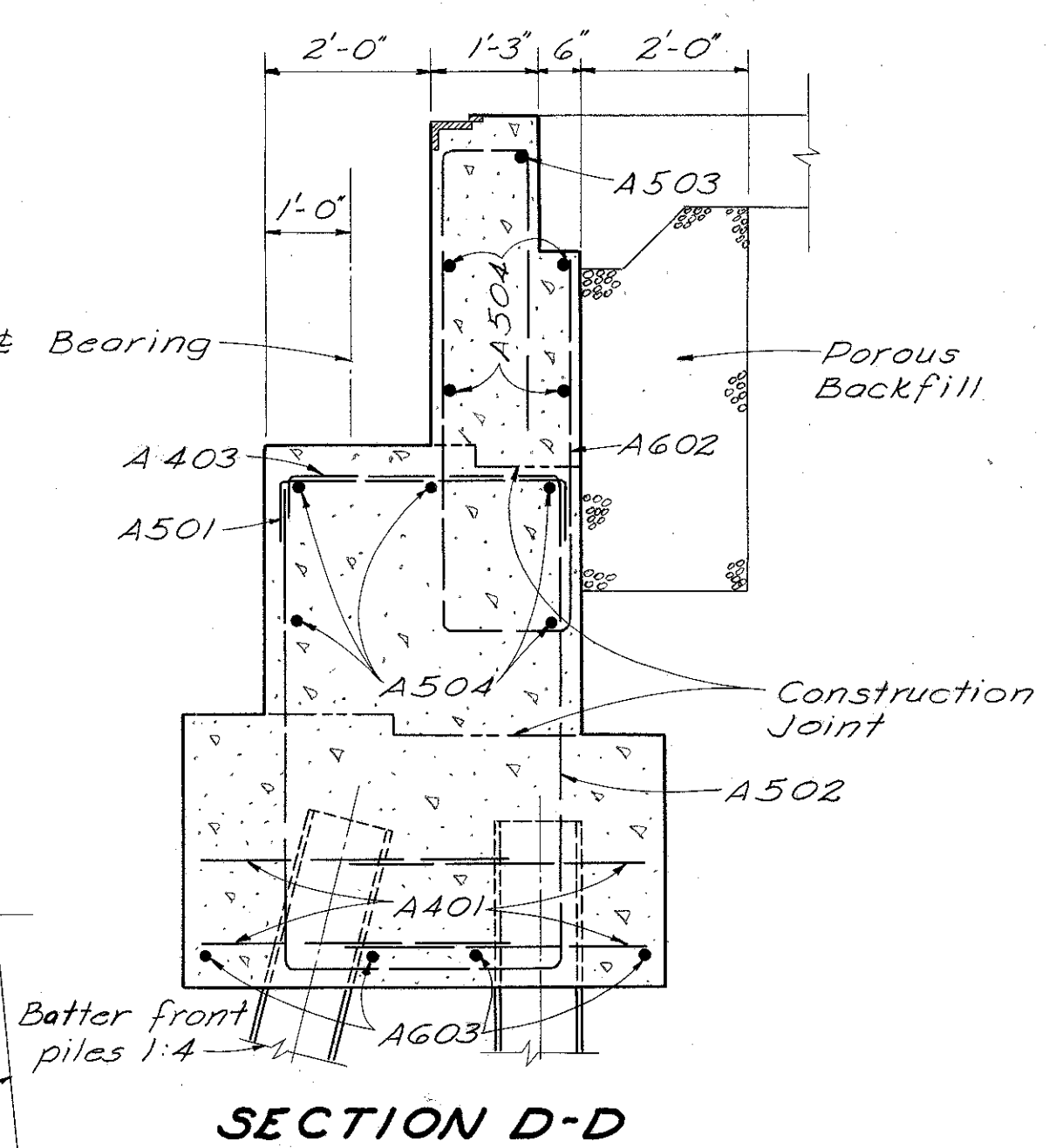
350
394

LAK-2-0.00

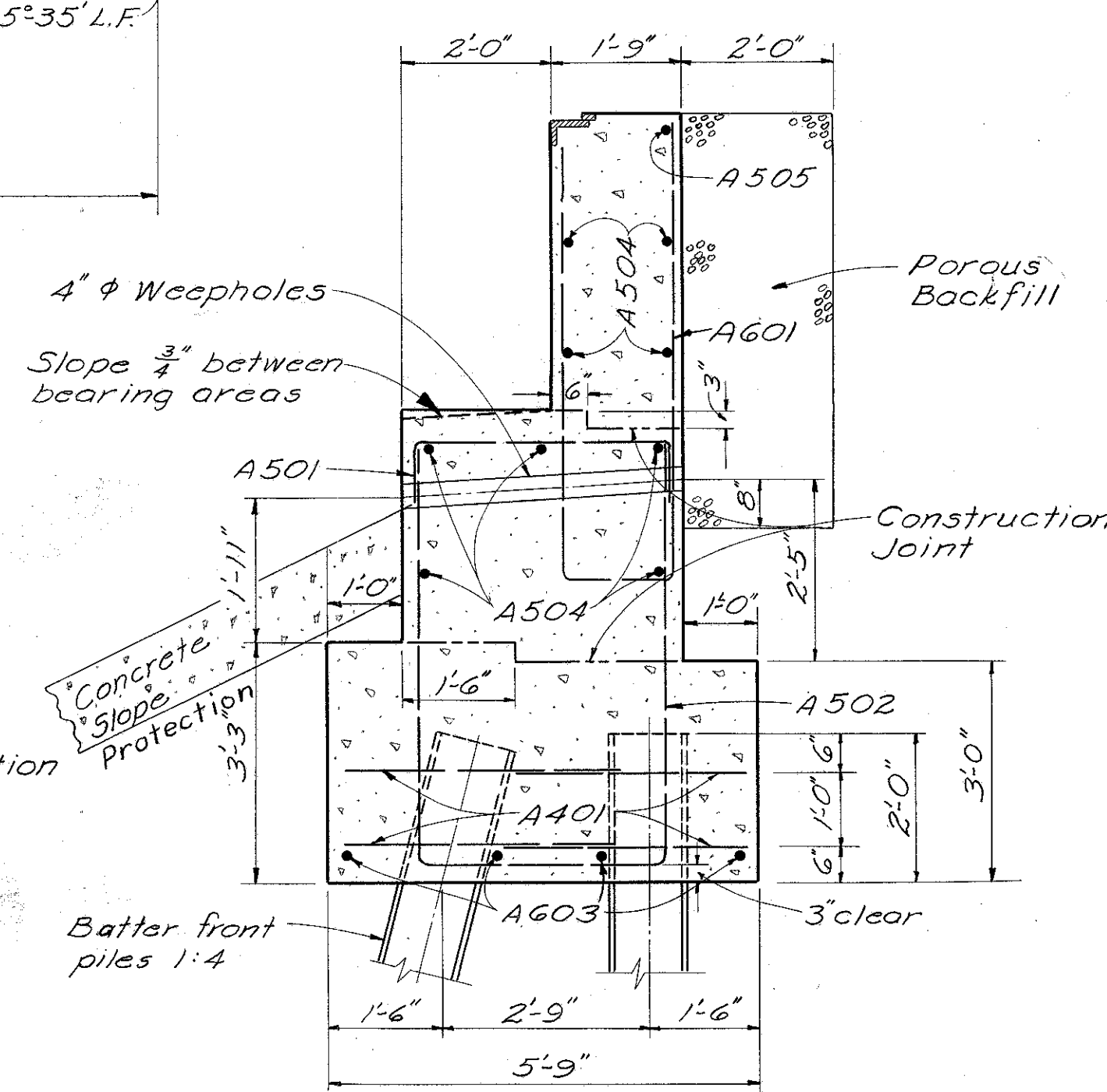


PLAN

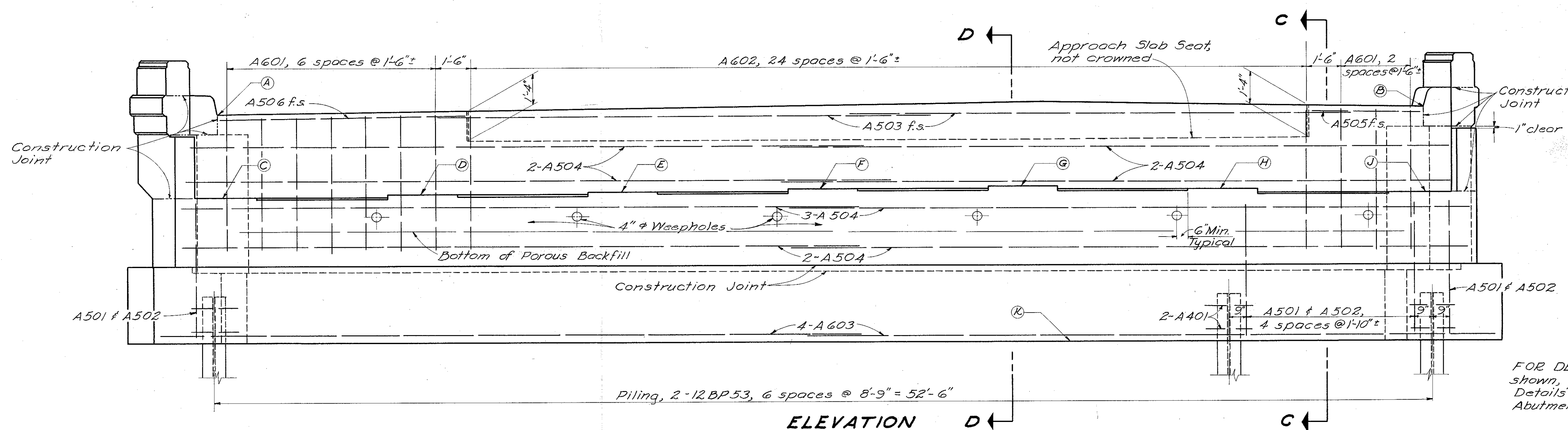
POINT	A	B	C	D	E	F	G	H	J	K
ABUTMENT 1	668.48	668.77	664.59	664.72	664.86	665.00	665.13	665.01	664.88	658.60
ABUTMENT 4	668.49	668.79	664.60	664.74	664.88	665.01	665.15	665.03	664.90	658.60



SECTION D-D



SECTION C-C



ELEVATION D

FOR DETAILS not shown, see Typical Details for Abutments; Sheet No. 352

STATE OF OHIO
DEPARTMENT OF HIGHWAYS
DIVISION OF DESIGN AND CONSTRUCTION
BUREAU OF BRIDGES

**DETAILS OF
ABUTMENTS 1 & 4
BRIDGE NO. LAK-2-081 L&R
OVER RUSH ROAD**

LAKE COUNTY STA. 195+14.24
196+79.26

DESIGNED	DRAWN	TRACED	CHECKED	REVIEWED	DATE	REVISED
H.L.C.	H.L.C.	Porter	B.G.	B.F.G.		