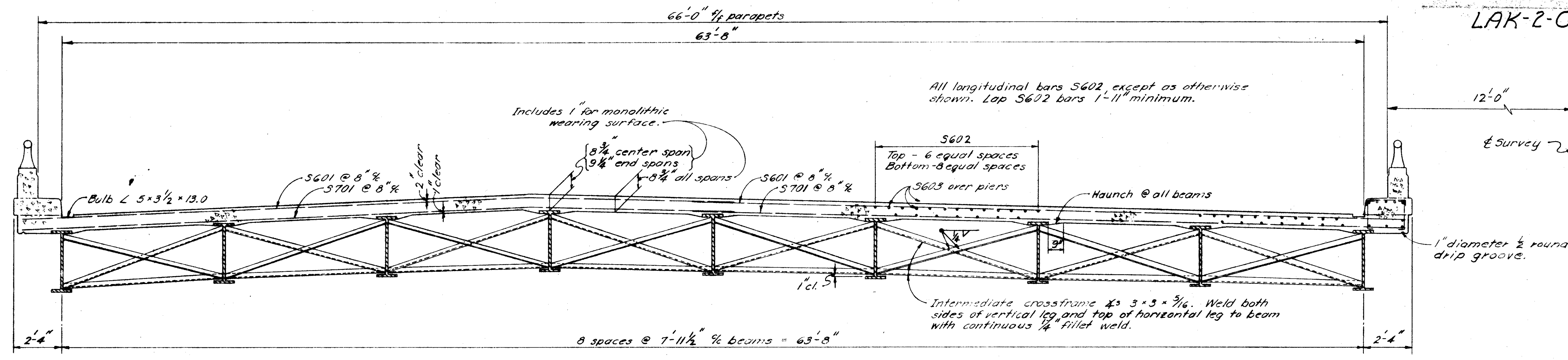


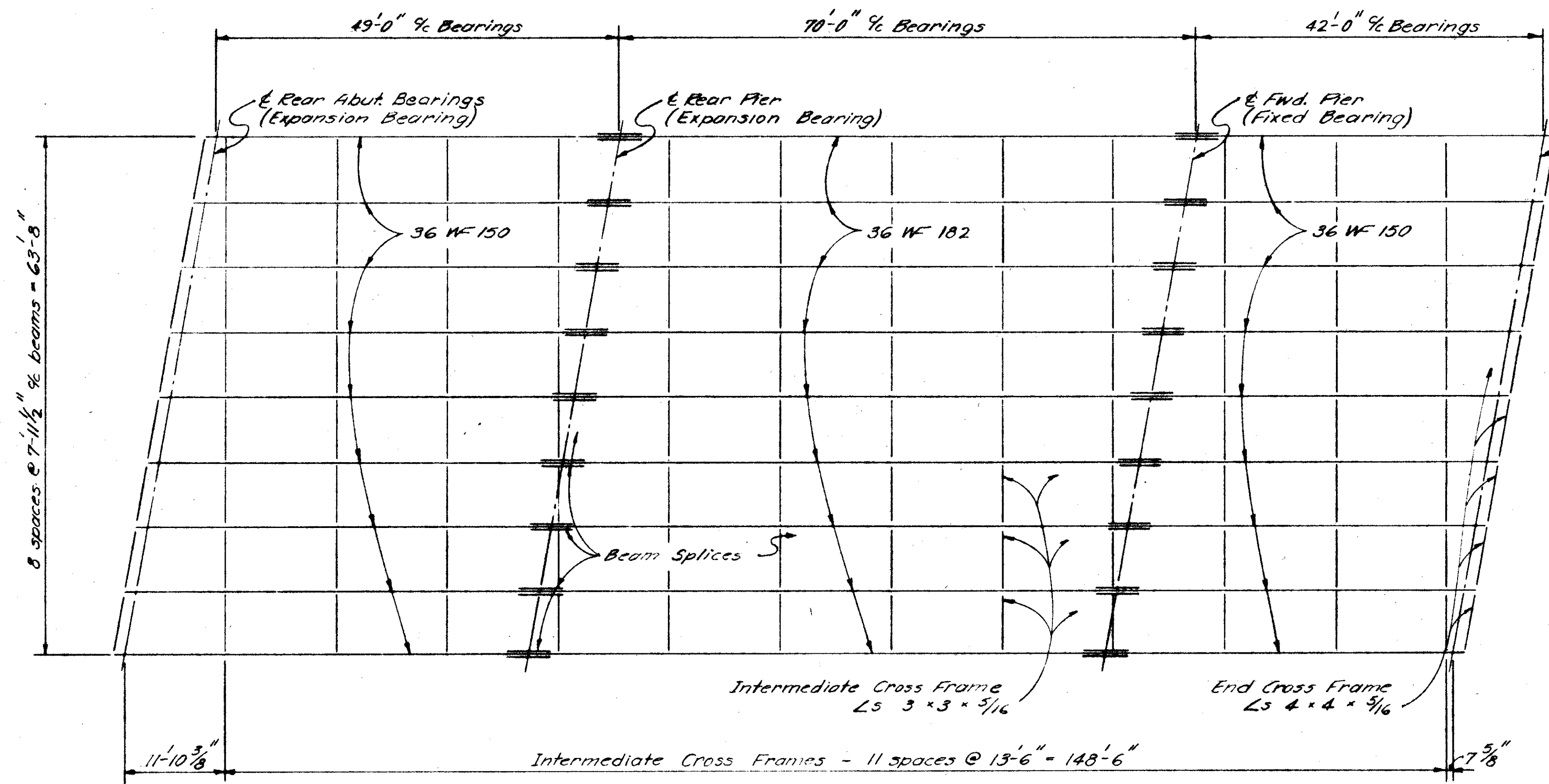
LAK-2-0.00



TRANSVERSE SECTION

For additional parapet and railing details see Common Details, Sheet No. 393A  
For additional superstructure details see Common Details, Sheet No. 394

TRANSVERSE REINFORCING BARS shall be placed parallel to abutments.



STEEL FRAMING PLAN

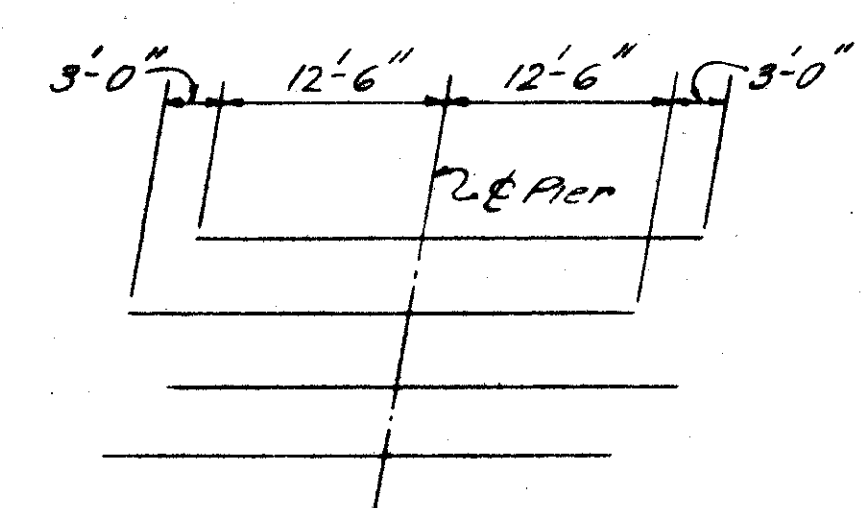
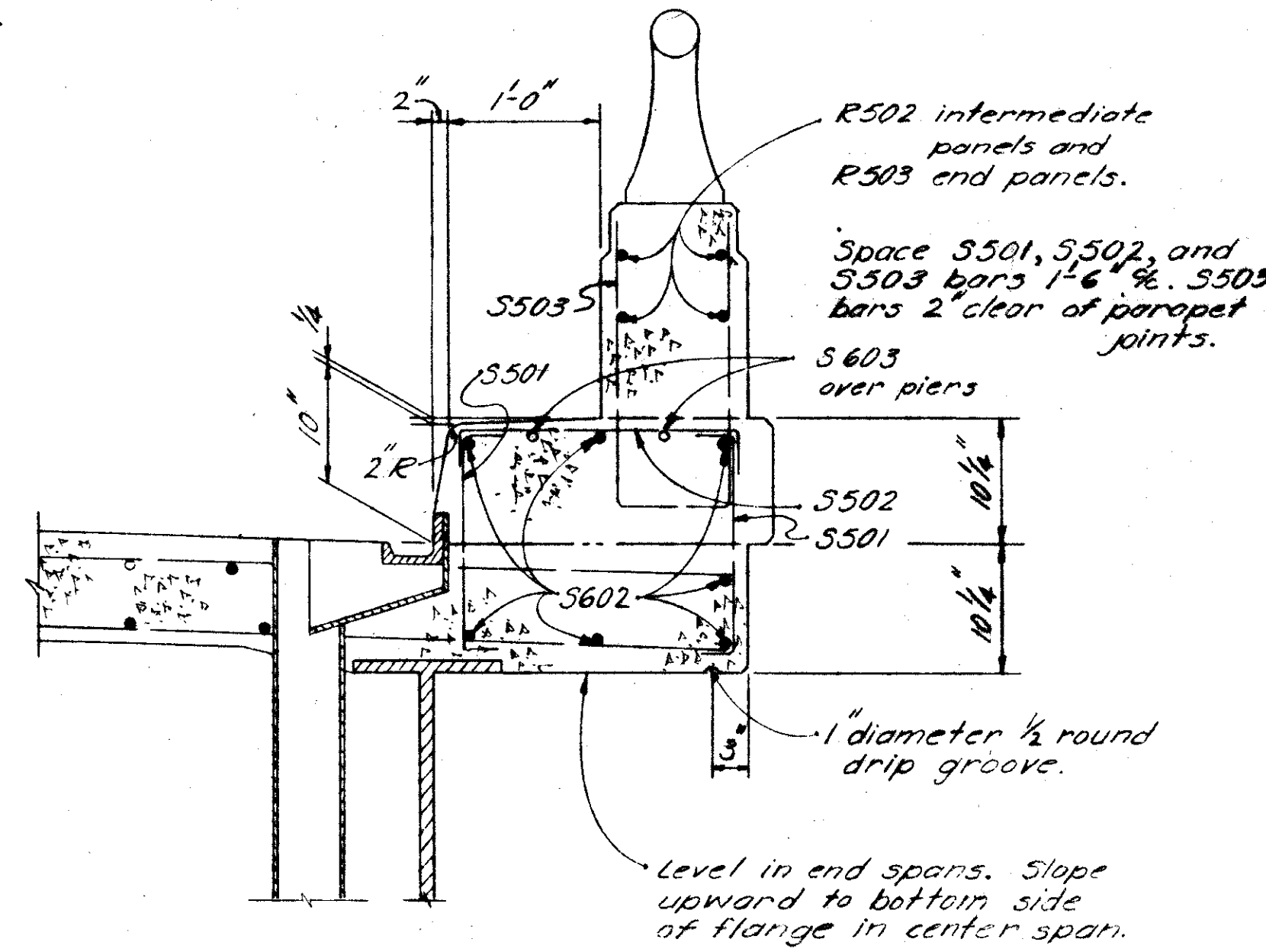


DIAGRAM SHOWING STAGGER OF S603 BARS OVER PIERS



PART TRANSVERSE SECTION AT EDGE OF SLAB

Location	Outside beams			Inside beam		
	49' Span	70' Span	42' Span	49' Span	70' Span	42' Span
Deflection due to weight of steel	0	1/8"	0	0	1/8"	0
Deflection due to remaining dead load	1/8"	1/2"	0	-1/8"	7/16"	0
Convexity required for vertical curve	1/8"	1/4"	1/8"	1/8"	1/4"	1/8"
Sum of Deflection and Convexity	1/4"	7/8"	1/8"	1/4"	13/16"	1/8"
Required Camber	0	1"	0	0	1"	0

STATE OF OHIO  
DEPARTMENT OF HIGHWAYS  
DIVISION OF DESIGN AND CONSTRUCTION  
BUREAU OF BRIDGES

**SUPERSTRUCTURE DETAILS**  
WEST BOUND LANES  
BRIDGE NO. LAK-2-0057 L&R  
OVER RAMP  
LAKE COUNTY STA. 129+13.72  
130+79.28

DESIGNED	DRAWN	TRACED	CHECKED	REVIEWED	DATE	REVISED
E.B.L.	DM		R.H.N.	B.F.G.	11-19-58	