

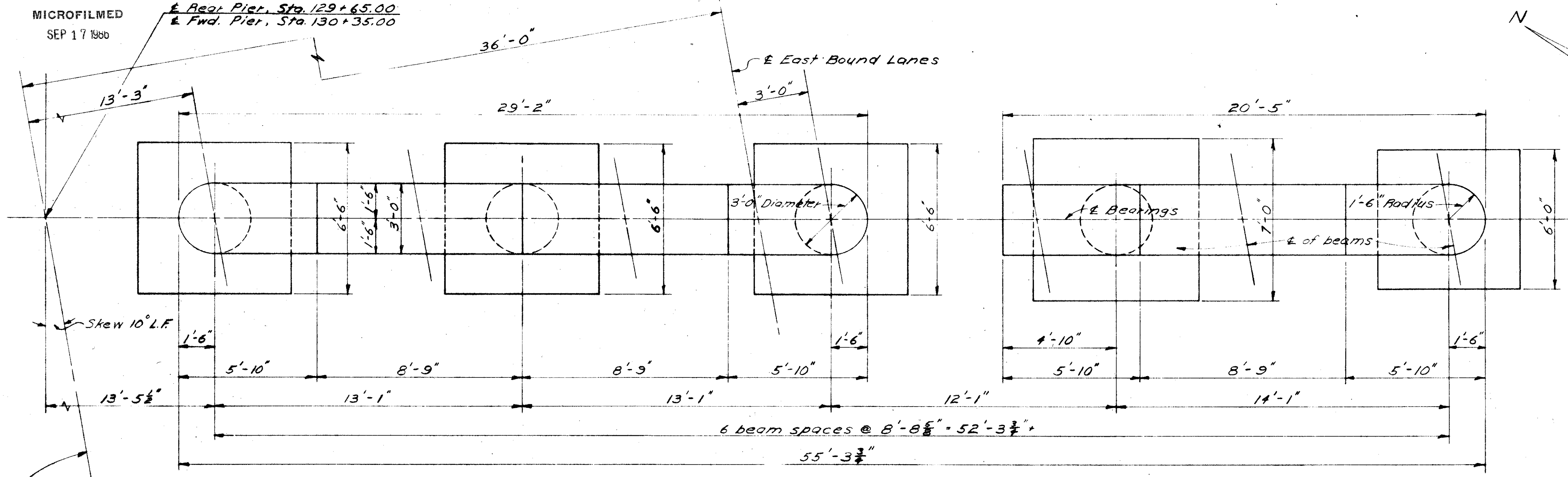
MICROFILMED
SEP 17 1966

Rear Pier, Sta. 129+65.00
Fwd. Pier, Sta. 130+35.00

FED. RD. DIVISION	STATE	PROJECT	
2	OHIO		

332
394

LAK-2-0.00

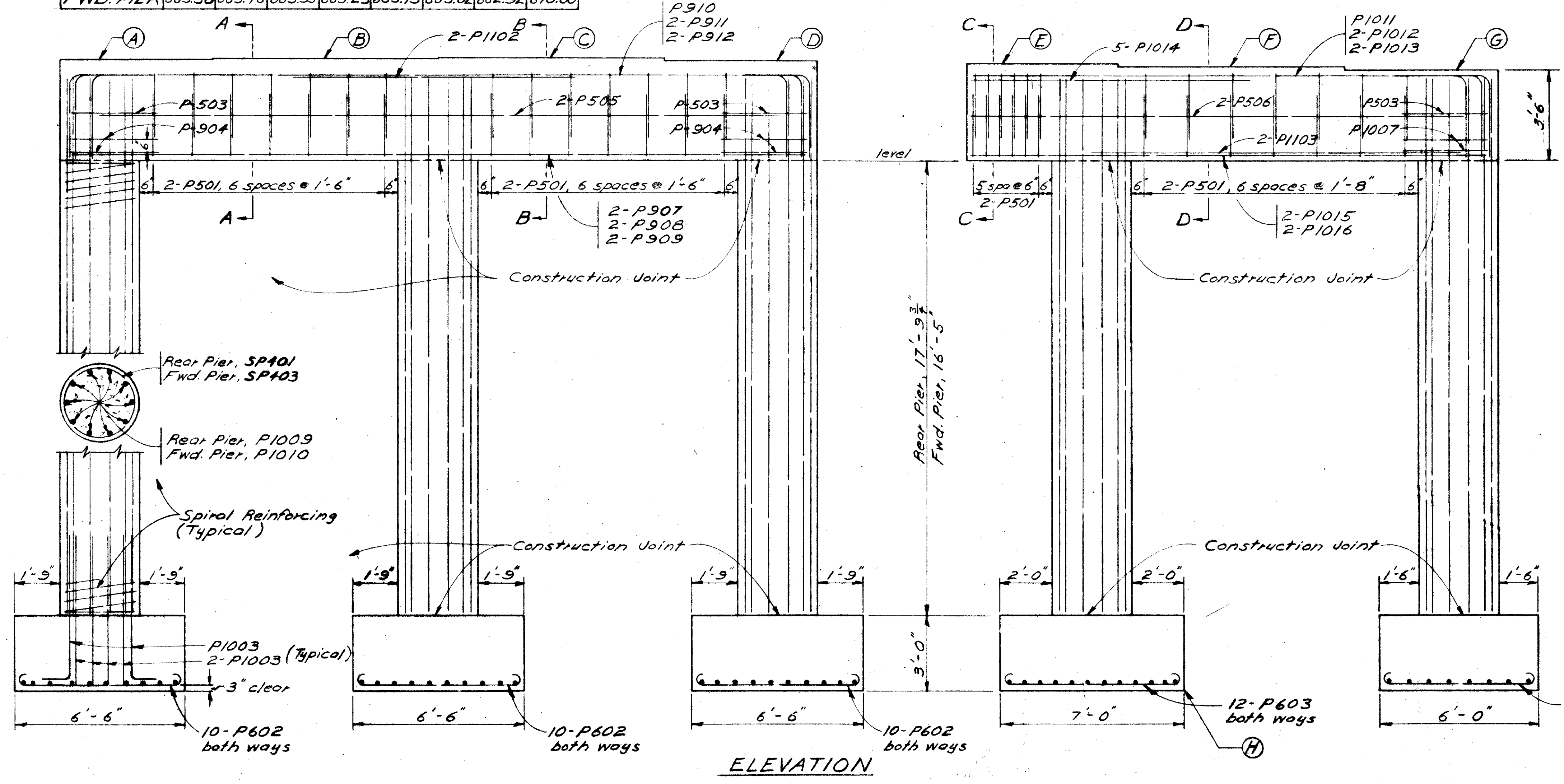


PLAN

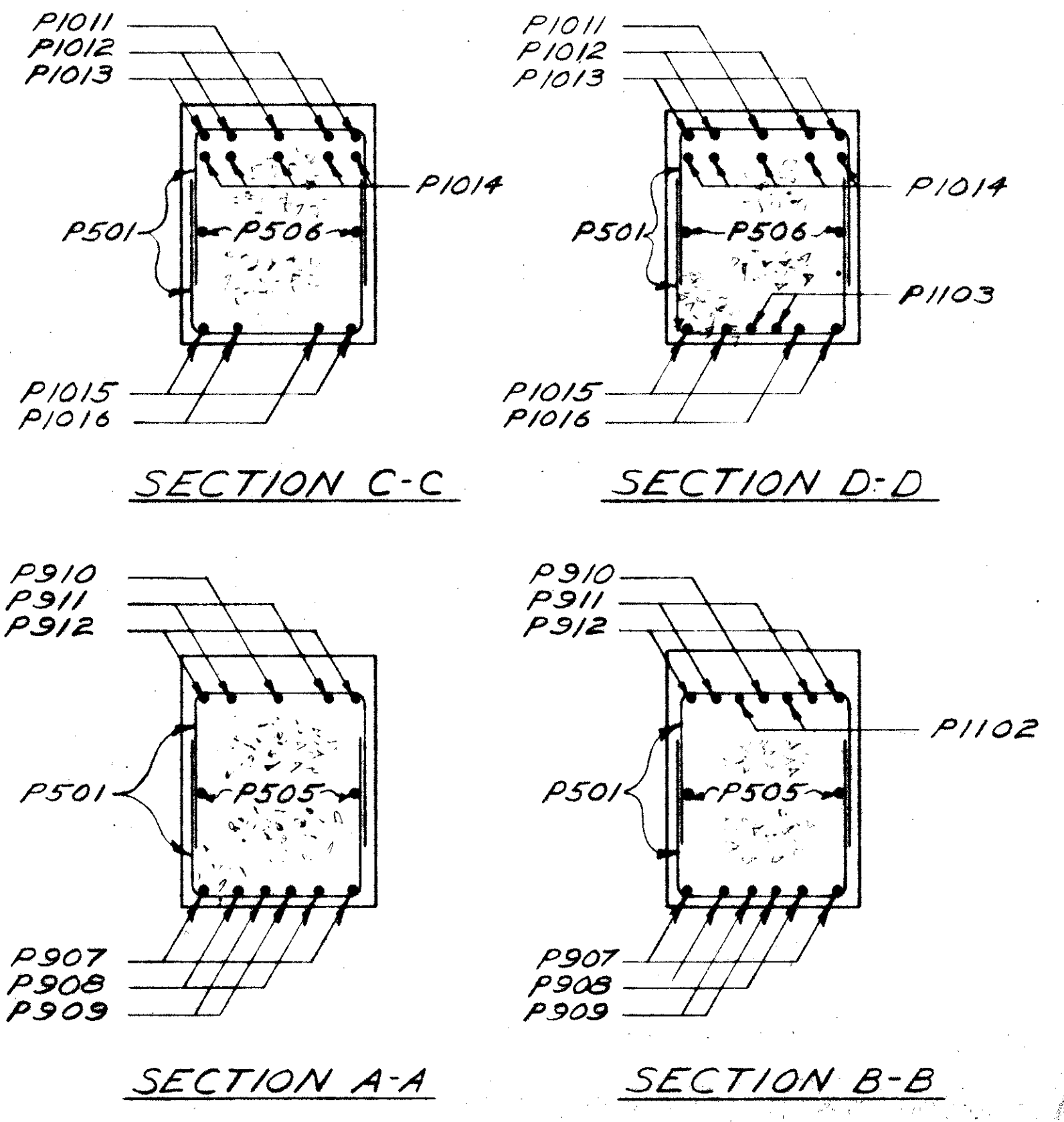
POINT	A	B	C	D	E	F	G	H
REAR PIER	664.71	664.72	664.73	664.62	664.52	664.41	664.31	640.00
FWD. PIER	663.58	663.46	663.35	663.23	663.13	663.02	662.92	640.00

Survey and
Lakeland Freeway

SPECIAL CARE shall be taken in placing reinforcing steel in the caps so that it will not interfere with the drilling of anchor bolt holes.



ELEVATION



STATE OF OHIO
DEPARTMENT OF HIGHWAYS
DIVISION OF DESIGN AND CONSTRUCTION
BUREAU OF BRIDGES

**PIER DETAILS
EAST BOUND LANES
BRIDGE NO. LAK-2-0057L&R
OVER RAMP
LAKE COUNTY Sta. 129+13.72
130+79.28**

DESIGNED	DRAWN	TRACED	CHECKED	REVIEWED	DATE	REVISED
E.B.L.	E.B.L.		R.H.N.	BFG	11-19-58	