

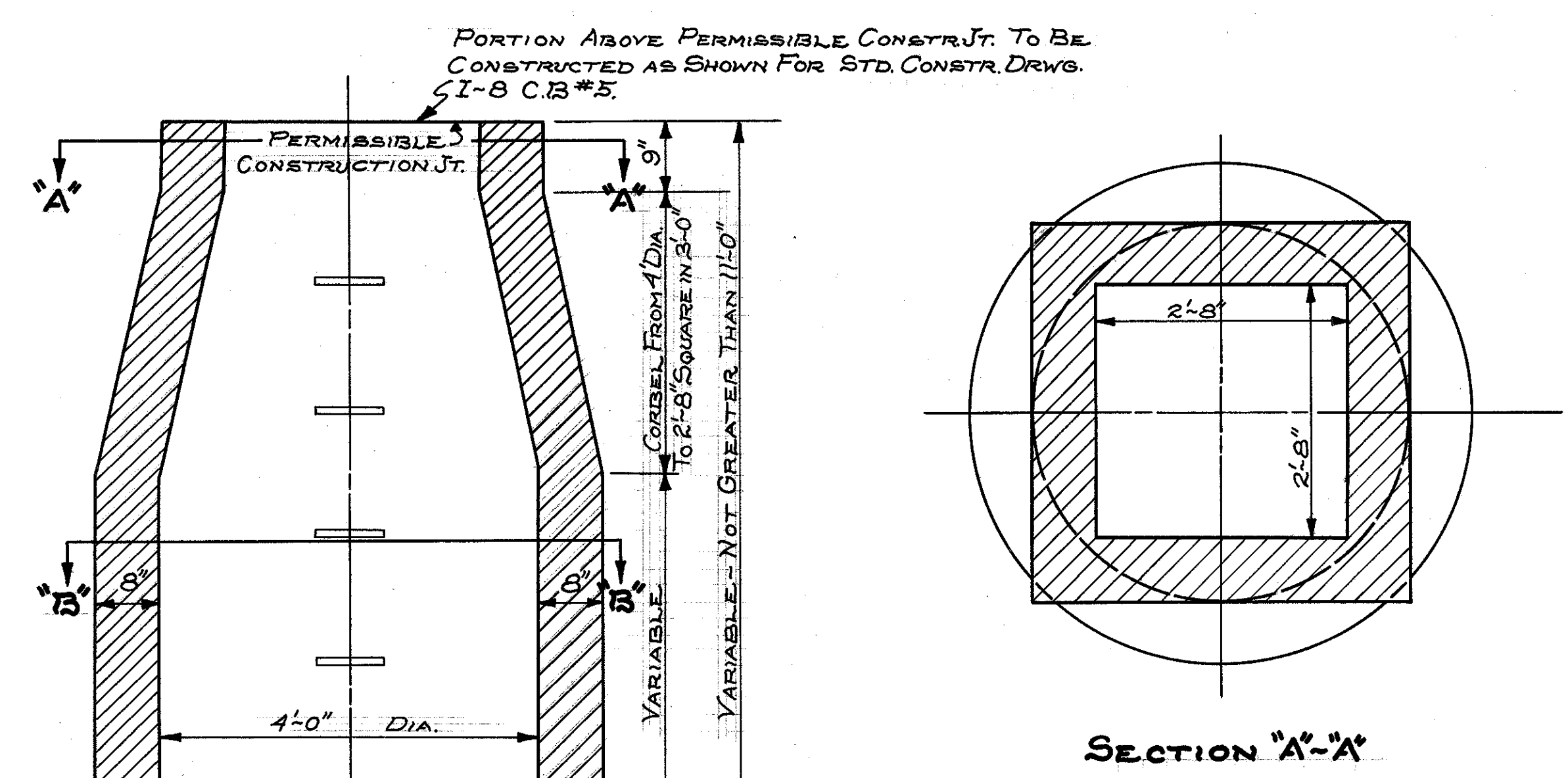
TYPICAL GUARD RAIL PROTECTION DETAIL AT OVERPASS AND SHOWING MEDIAN DITCH MODIFICATION

NOTE
GENERAL - Design details shown here on shall govern the construction of guard rail at structures and piers unless otherwise shown on the plans
DIKE shall be provided at each end of each pair of structures
 Top of rail shall be 24" above profile grade line throughout length of rail

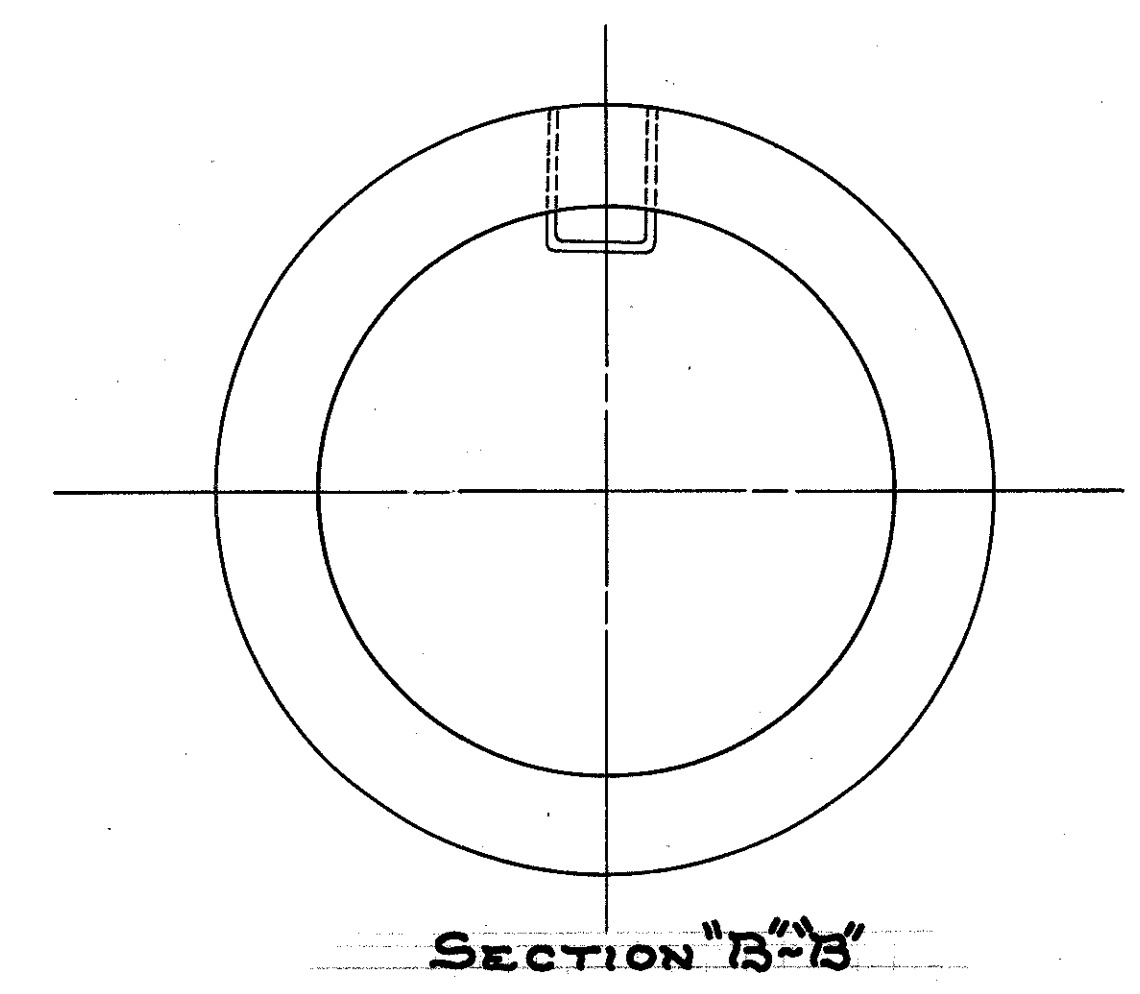
36' MEDIAN

DISTANCE BETWEEN EDGE OF PAVEMENT AND FACE OF GUARD RAIL			
POST	OFFSET	POST	OFFSET
1/2	6.00	12	10.08
1	6.03	13	10.79
2	6.11	14	11.56
3	6.26	15	12.38
4	6.45	16	13.26
5	6.71	17	14.19
6	7.02	18	15.18
7	7.39	19	16.23
8	7.82	20	17.34
9	8.30	21	18.50
10	8.84	22	19.72
11	9.43	23	21.00

SPECIAL COMBINATION #5 C.B. - MANHOLE



NOTE:
 FOR NOTES, DIMENSIONS AND DETAILS NOT SHOWN STD. DRWGS, I-8 M.H.#1 AND I-8 - C.B.#5 SHALL APPLY.



SECTION "B-B"