

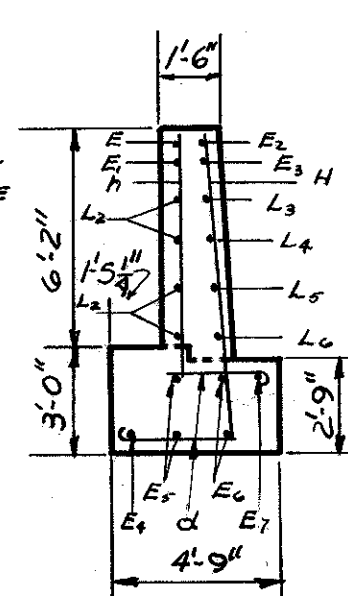
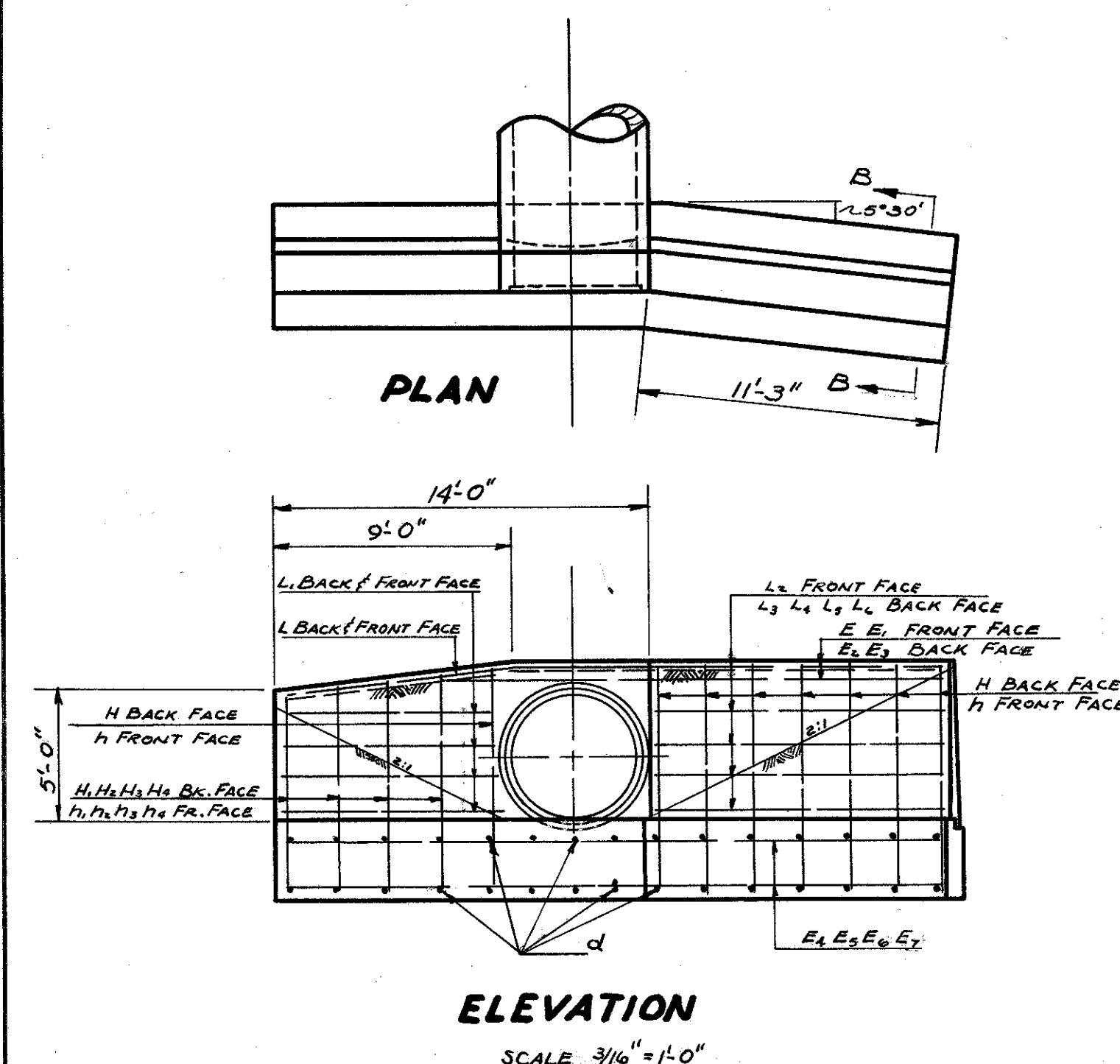
54" DIA. PIPE CULVERT

UNDER RUSH ROAD STA. 0+82
SCALE: 1" = 20'-0"

FED. RD. DIVISION	STATE	PROJECT
2	OHIO	

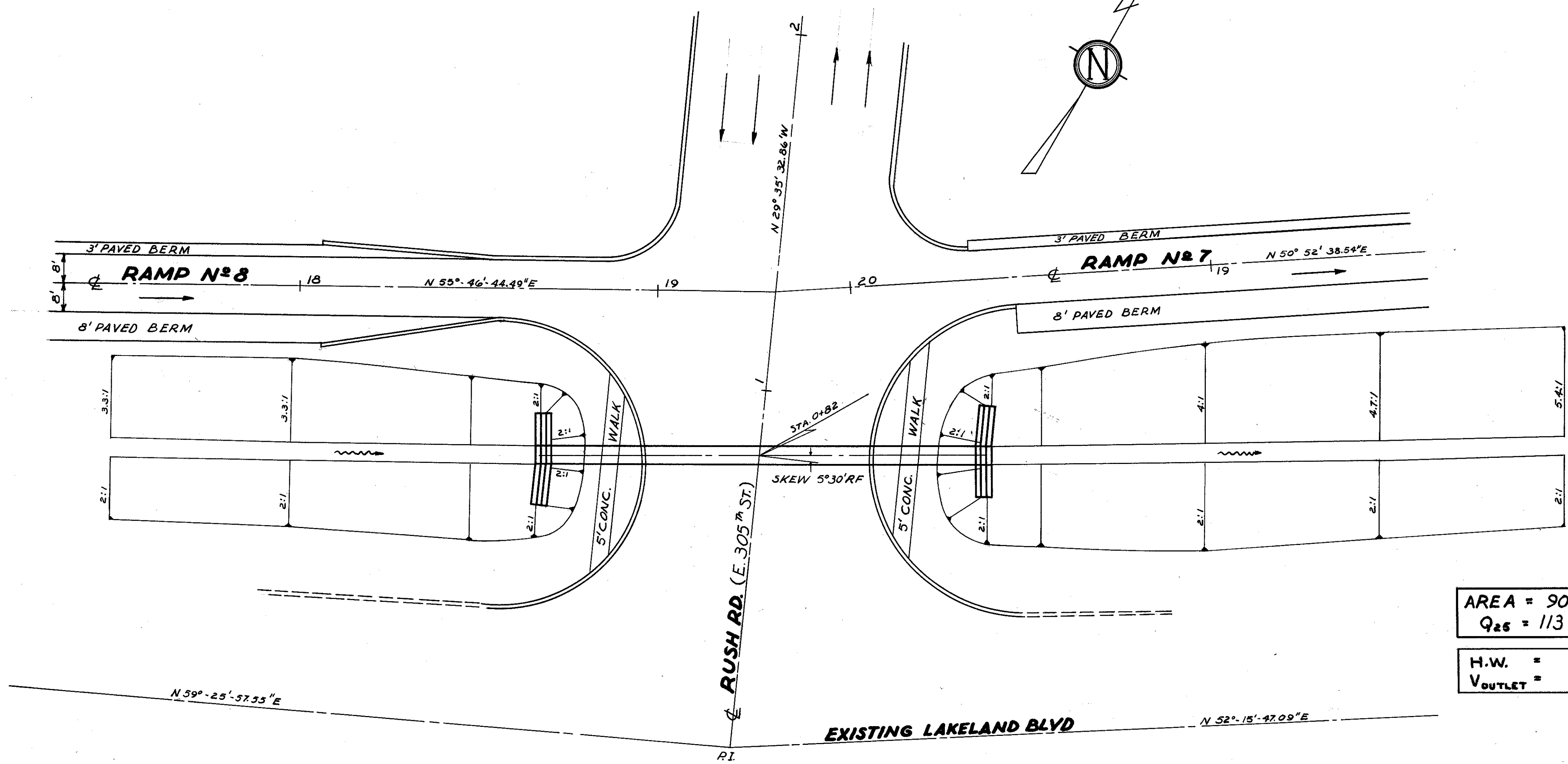
298
394

LAKE COUNTY
LAK-2-0.00

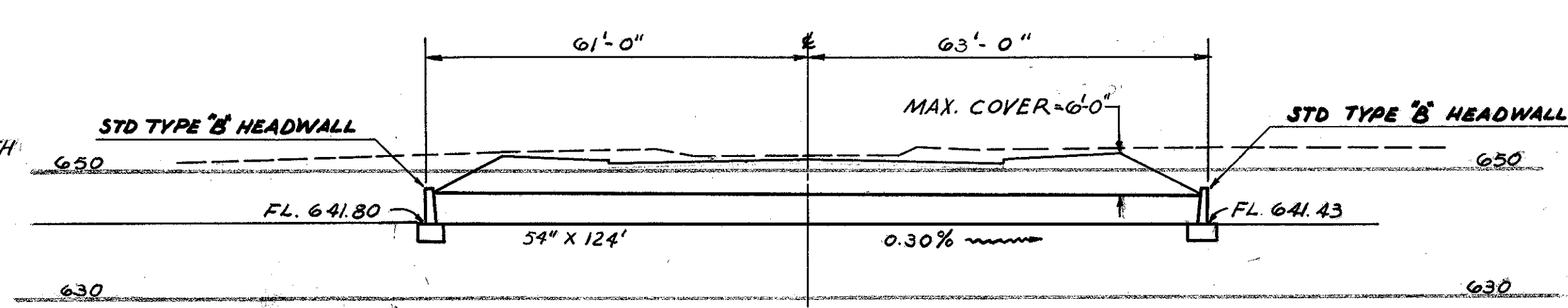
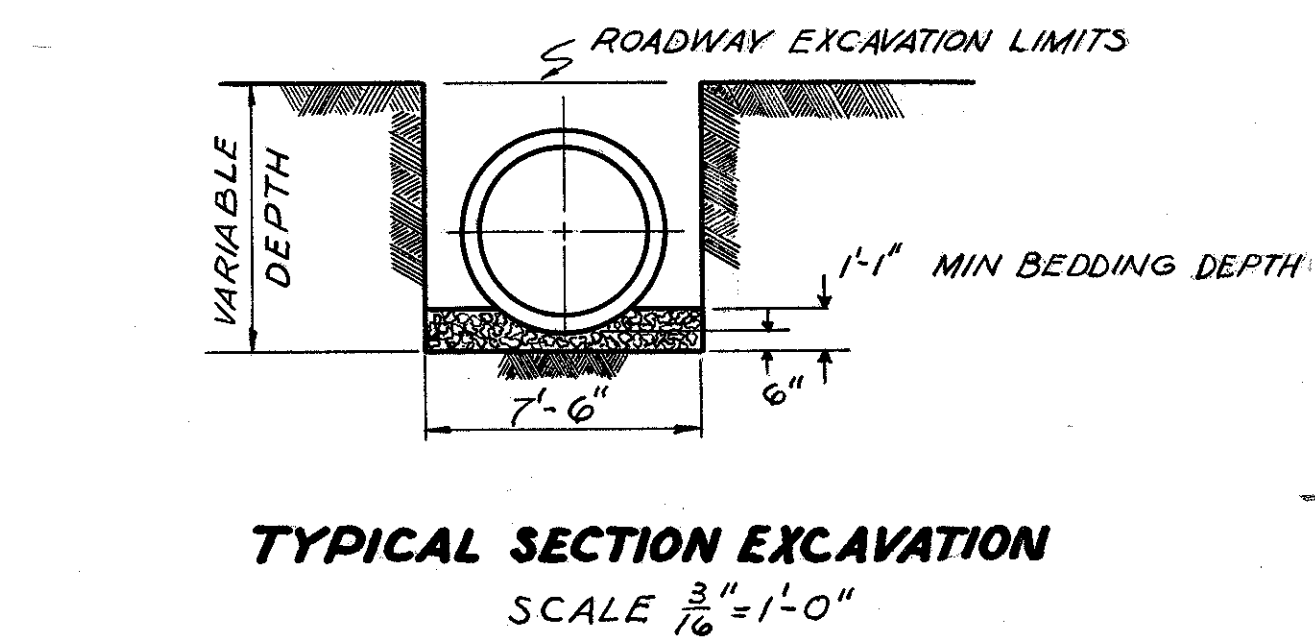
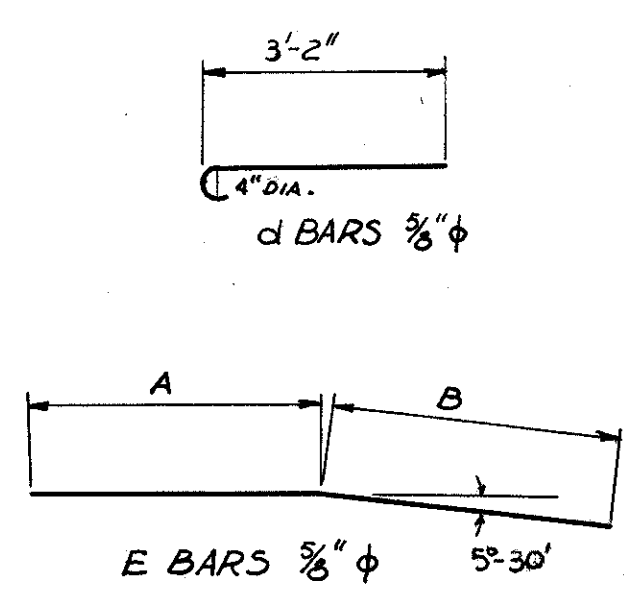


SECTION B-B

NOTE: REINFORCING STEEL: ALL BARS $\frac{3}{8}$ " ϕ
QUANTITIES SHOWN IN STEEL LIST ARE FOR ONE HEADWALL ONLY.
FOR ADDITIONAL INFORMATION SEE STD. CONSTR. DWG. TYPE 'B' HEADWALL



REINFORCING STEEL LIST						
MARK	N ^o	A	B	LENGTH	LBS	SHAPE
H	8			8'-9"	73.01	STRAIGHT
H ₁	1			8'-5"	8.78	
H ₂	1			8'-2"	8.52	
H ₃	1			7'-11"	8.26	
H ₄	1			7'-8"	8.00	
h	8			5'-11"	49.37	STRAIGHT
h ₁	1			5'-7"	5.82	
h ₂	1			5'-4"	5.56	
h ₃	1			5'-1"	5.30	
h ₄	1			4'-10"	5.04	
L	2			8'-10"	18.43	BENT
L ₁	8			7'-11"	66.06	
L ₂	4			11'-0"	45.90	
L ₃	1			11'-1"	11.56	
L ₄	1			11'-2"	11.65	
L ₅	1			11'-3"	11.73	
L ₆	1			11'-4"	11.82	
E	1	6'-0"	11'-0"	17'-0"	17.73	BENT
E ₁	1	8'-0"	11'-0"	19'-0"	19.82	
E ₂	1	6'-2"	11'-0"	17'-2"	17.90	
E ₃	1	8'-2"	11'-0"	19'-2"	19.99	
E ₄	1	13'-8"	10'-11"	24'-7"	25.64	
E ₅	2	13'-10"	11'-0"	24'-10"	51.80	
E ₆	2	14'-0"	11'-1"	25'-1"	52.32	
E ₇	1	14'-2"	11'-2"	25'-4"	26.42	
d	30			3'-9"	117.34	
TOTAL					703.77	LBS.



AREA = 90 ACRES
Q ₂₅ = 113 C.F.S.
H.W. = 4.9 FT.
V _{OUTLET} = 6.9 F.P.S.

ESTIMATED QUANTITIES

E-2 EXCAVATION FOR STRUCTURES*	323 CU. YDS.
S-1 CONCRETE FOR STRUCTURES, CLASS 'C'	415 CU. YDS.
S-4 REINFORCING STEEL	1407 LBS.
S-27 54" PIPE FOR ROADWAY CULVERT	124 LIN. FT.

* INCLUDES E-2 FOR HEADWALLS

CULVERT DATA
 TYPE: S-27 PIPE FOR ROADWAY CULVERT
 SIZE: 54" X 124"
 SKEW: 5°-30' RT. FWD.
 WORK REQUIRED: BUILD 54" PIPE CULVERT WITH STD TYPE 'B' HEADWALL RIGHT & LEFT.

54" CULVERT UNDER RUSH RD. STA 0+82