

EXTRA AREA DETAIL - RAMP N° 7

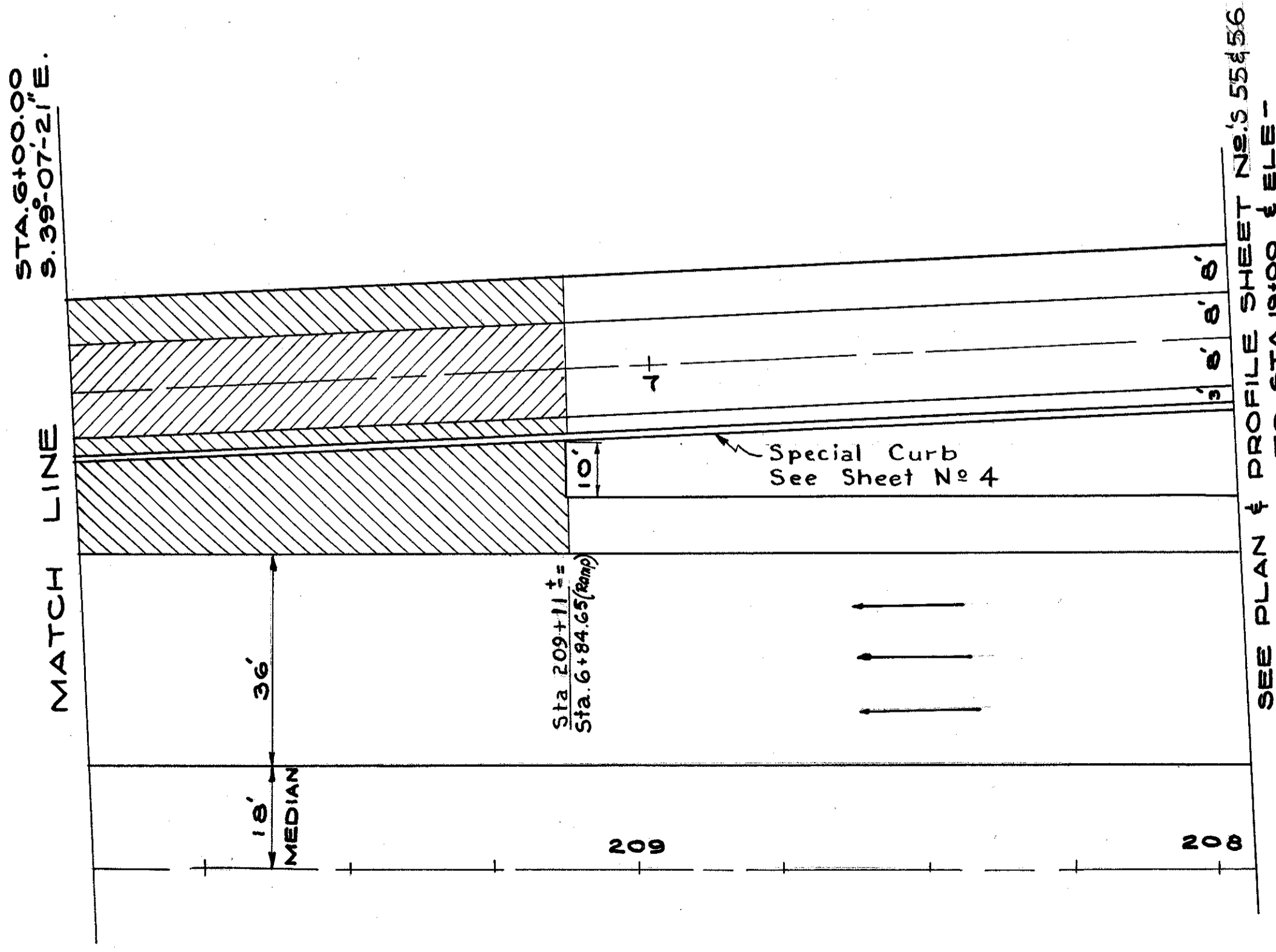
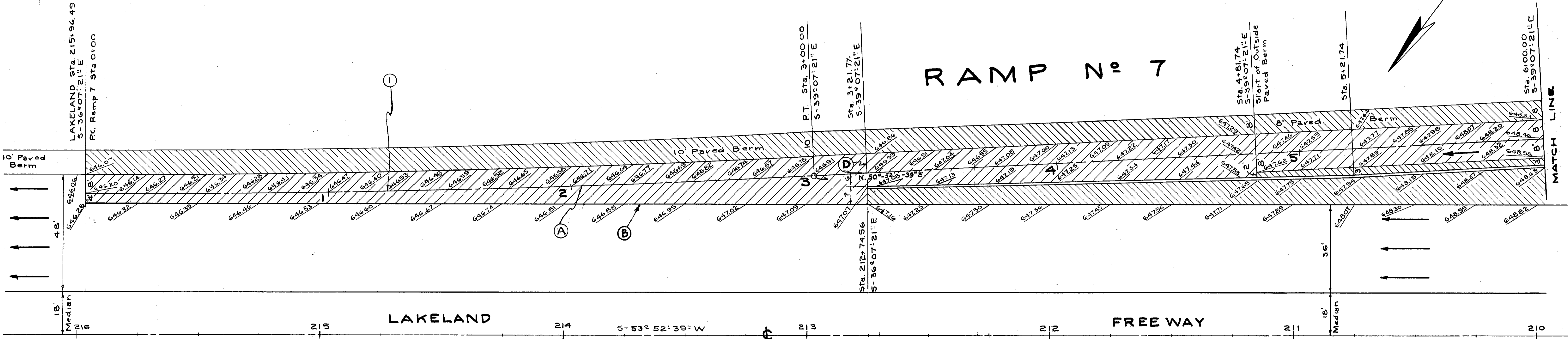
SCALE 1" = 20'

FED. RD. DIVISION	STATE	PROJECT	FISCAL YEAR
2	OHIO		

96
394

LAKE COUNTY
LAK-2-0.00

LOCATION	T-11	I-22	S-33	I-18	I-12	
	10' REINF. PORT. CEMENT CONC. PAU/T 50 YDS.	SUBBASE CU. YDS.	BIT. MACAD. AM. BASE COURSE SQ. YDS.	STABILIZED CRUSHED AGGREGATE CU. YDS.	SPECIAL CURB LIN. FT.	TYPE 2A CURB SQ. YDS.
0+00 to 3+21.74	543	144	357	50		
3+21.74 to 6+00	492	185	626	110	278.5	
6+00 to 8+00	151	69	269	49	200.0	
19+00 to End of Ramp	217	46	70	11	95.7	
TOTAL	1403	444	1322	220	478.5	95.7



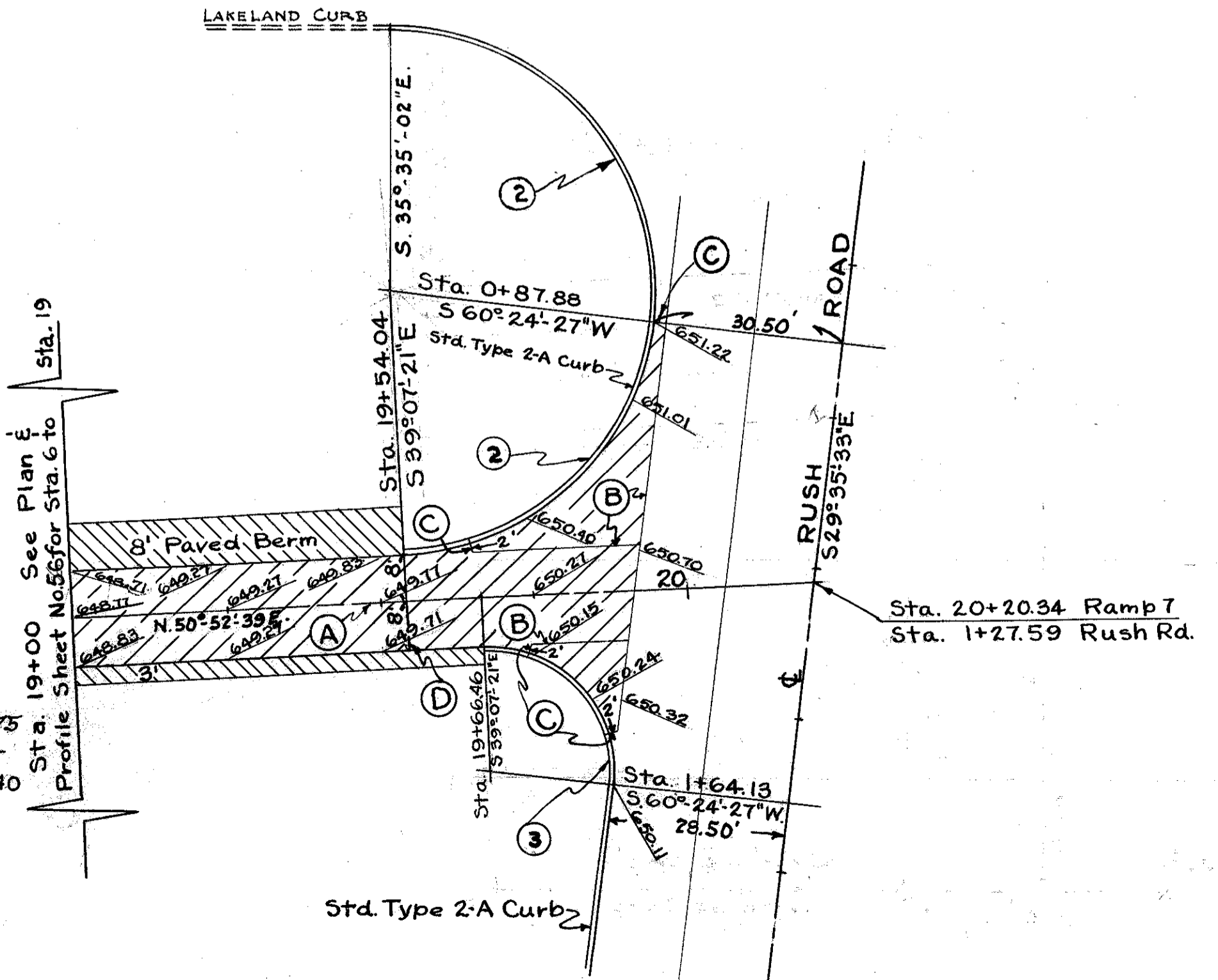
SEE PLAN & PROFILE SHEET N° 5 55156 FOR STA. 0+00 TO STA. 19+00 VARIATION STA. 6+00 TO STA. 19+00

- LEGEND**
- NEW PAVEMENT
 - PAVED BERM
 - Standard Longitudinal Joint
 - Standard Key Joint Without Tie Bars
 - Expansion Joint Without Dowels
 - Standard Expansion Joint

CURVE DATA

$D_0 = 1'$	$\Delta = 176^\circ - 27' - 40''$
$\Delta = 300.00'$	$R = 43.40'$
$T = 5729.58'$	$L = 133.66'$
$Q = 15003.51'$	$Ch = 86.76'$
$S = 900.00'$	
$T = 299.97'$	
$\Delta = 99^\circ - 31' - 48''$	
$R = 20.00'$	
$L = 34.742'$	
$Ch = 30.54'$	

Elevations @ STA. 18+75
Left & Right
648.15 648.27 648.40



EXTRA AREA DETAIL - RAMP N° 7