







EXTRA AREA DETAIL - RAMP N^o 6

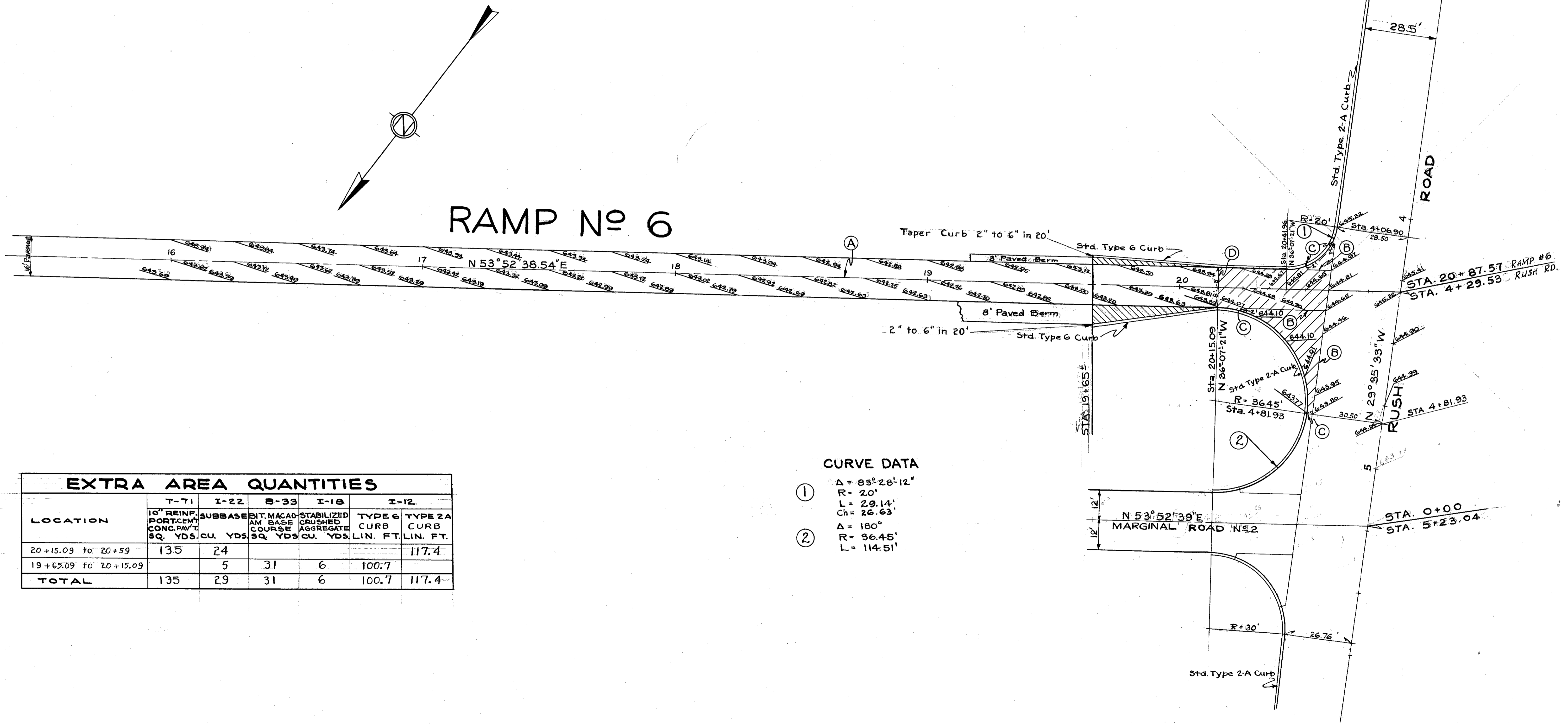
SCALE 1" = 20'

FED. RD. DIVISION	STATE	PROJECT	FISCAL YEAR
2	OHIO		

LAKE COUNTY
LAK-2-0.00

95
394

- LEGEND**
-  NEW PAVEMENT
 -  PAVED BERM
 -  Standard Longitudinal Joint
 -  Standard Key Joint Without Tie Bars
 -  Expansion Joint Without Dowels
 -  Standard Expansion Joint



RAMP N^o 6

EXTRA AREA QUANTITIES

LOCATION	T-71	I-22	B-33	I-18	I-12	
	10' REINF. PORT. CEM. CONC. PAV'T. SQ. YDS.	SUBBASE CU. YDS.	BIT. MACAD. STABILIZED AM. BASE COURSE SQ. YDS.	CRUSHED AGGREGATE CU. YDS.	TYPE 6 CURB LIN. FT.	TYPE 2A CURB LIN. FT.
20+15.09 to 20+59	135	24				117.4
19+65.09 to 20+15.09		5	31	6	100.7	
TOTAL	135	29	31	6	100.7	117.4

- CURVE DATA**
- ① Δ = 83° 28' 12"
 - ① R = 20'
 - ① L = 29.14'
 - ① Ch = 26.63'
 - ② Δ = 180°
 - ② R = 36.45'
 - ② L = 114.51'