

# EXTRA AREA DETAIL-RAMP N<sup>o</sup> 5

SCALE 1" = 20'

FED. RD. DIVISION	STATE	PROJECT	FISCAL YEAR
2	OHIO		

LAKE COUNTY  
LAK-2-0.00

93  
394

## EXTRA AREA QUANTITIES

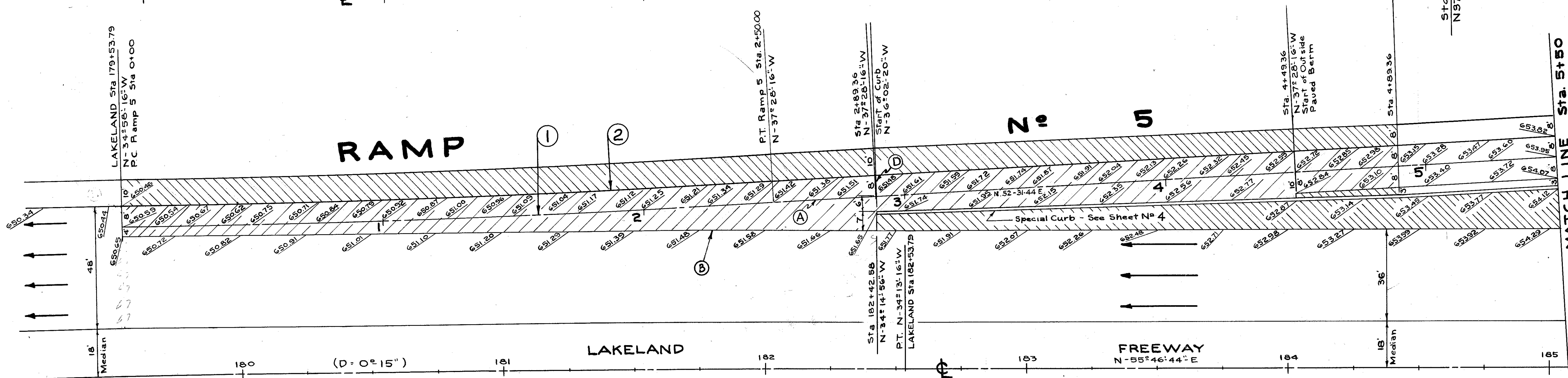
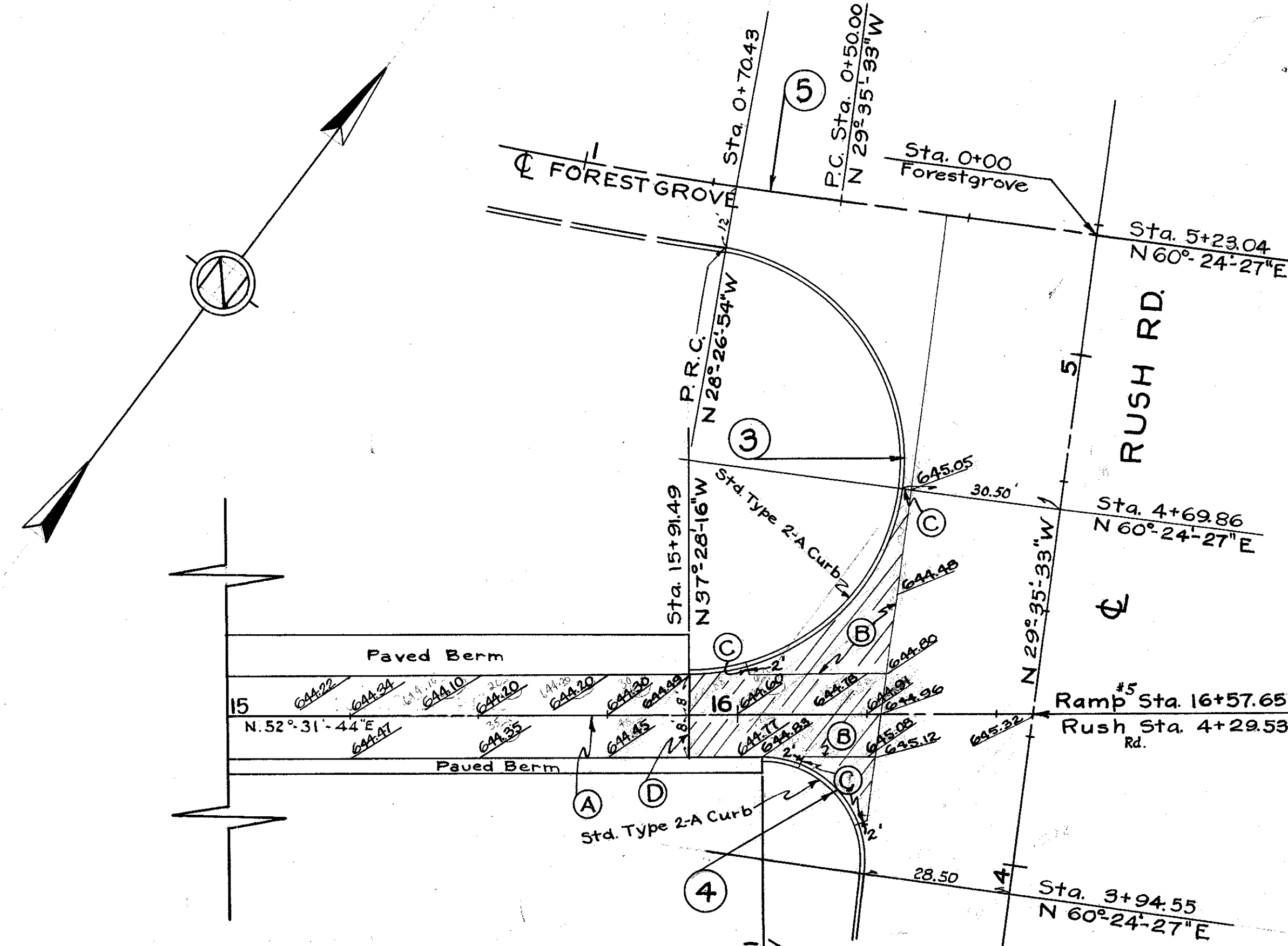
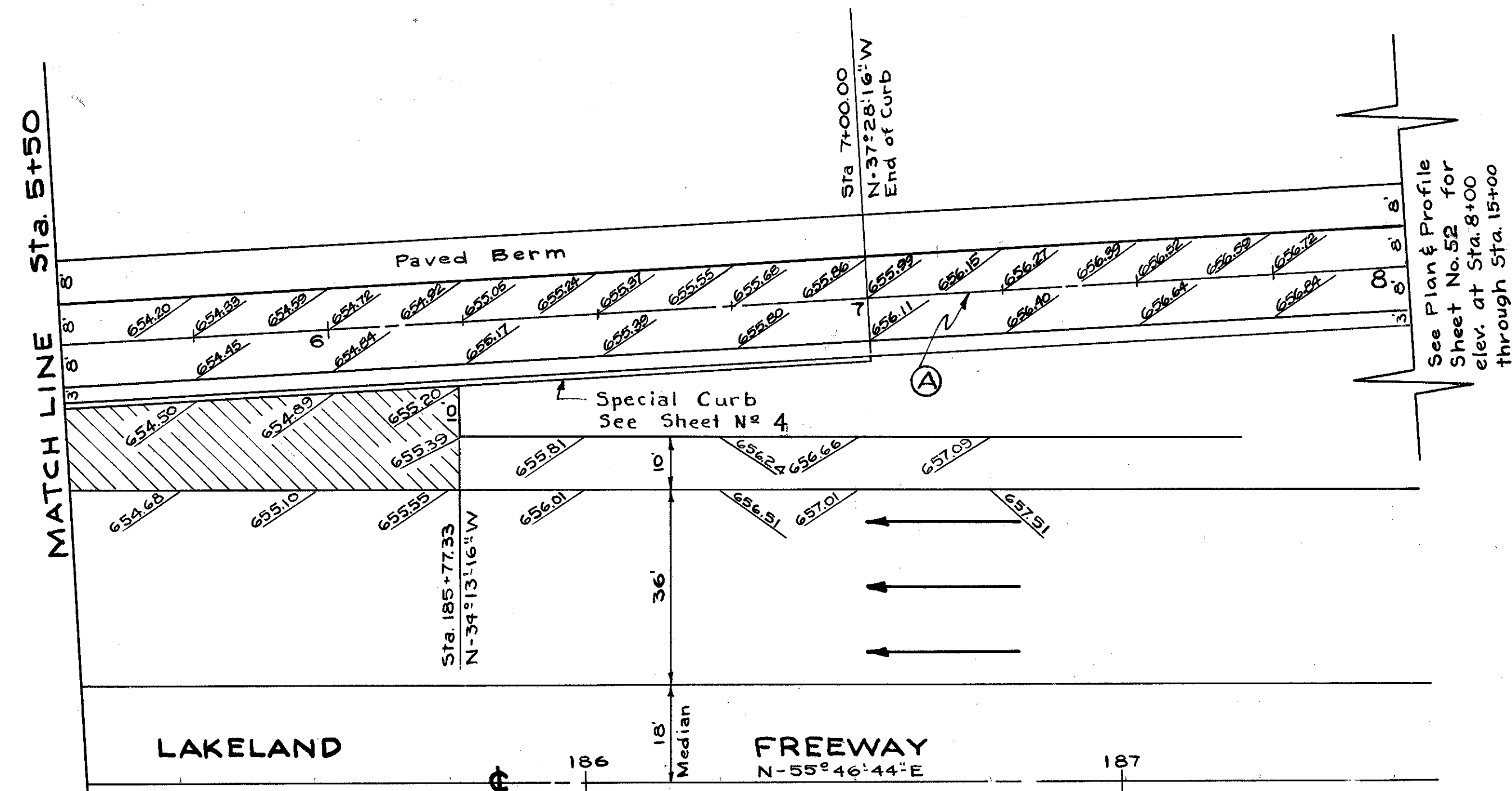
LOCATION	T-71	I-22	B-33	I-18	I-12	
	10" REINF. PORTCEM. CONC. PAV'T. SQ. YDS.	SUBBASE CU. YDS.	BIT. MACAD. AM. BASE COURSE SQ. YDS.	STABILIZED CRUSHED AGGREGATE CU. YDS.	SPECIAL CURB LIN. FT.	TYPE 2A CURB LIN. FT.
0+00 to 2+89.36	489	130	321	46		
182+42.58 to 185+77.33		74	441	86		
2+89.36 to 4+89.36	356	91	211	31		
2+89.36 to 7+00					410.6	
15+91.49 to 16+27.65	121	20				92.2
<b>TOTAL</b>	<b>966</b>	<b>315</b>	<b>973</b>	<b>163</b>	<b>410.6</b>	<b>92.2</b>

## LEGEND

- NEW PAVEMENT
- PAVED BERM
- (A) Standard Longitudinal Joint
- (B) Standard Key Joint Without Tie Bars
- (C) Expansion Joint Without Dowels
- (D) Standard Expansion Joint

## CURVE DATA

- ①  $D_c = 1'$   
 $\Delta = 2^\circ 30' 00''$   
 $R = 5729.58'$   
 $L = 250.00'$   
 $T = 125.02'$   
 $Ch = 249.98'$
- ②  $\Delta = 2^\circ 30' 00''$   
 $R = 5721.58'$   
 $L = 249.65'$   
 $T = 124.85'$   
 $Ch = 249.63'$
- ③  $\Delta = 170^\circ 58' 39''$   
 $R = 41.87'$   
 $L = 124.95'$   
 $T = 530.67'$   
 $Ch = 83.48'$
- ④  $\Delta = 97^\circ 52' 43''$   
 $R = 20.00'$   
 $L = 34.17'$   
 $T = 22.97'$   
 $Ch = 30.16'$
- ⑤  $\Delta = 1^\circ 08' 39''$   
 $R = 1023.00'$   
 $L = 20.43'$   
 $T = 10.214'$   
 $Ch = 20.427'$



# EXTRA AREA DETAIL-RAMP N<sup>o</sup> 5