

# EXTRA AREA DETAIL - LLOYD RD. CONNECTION

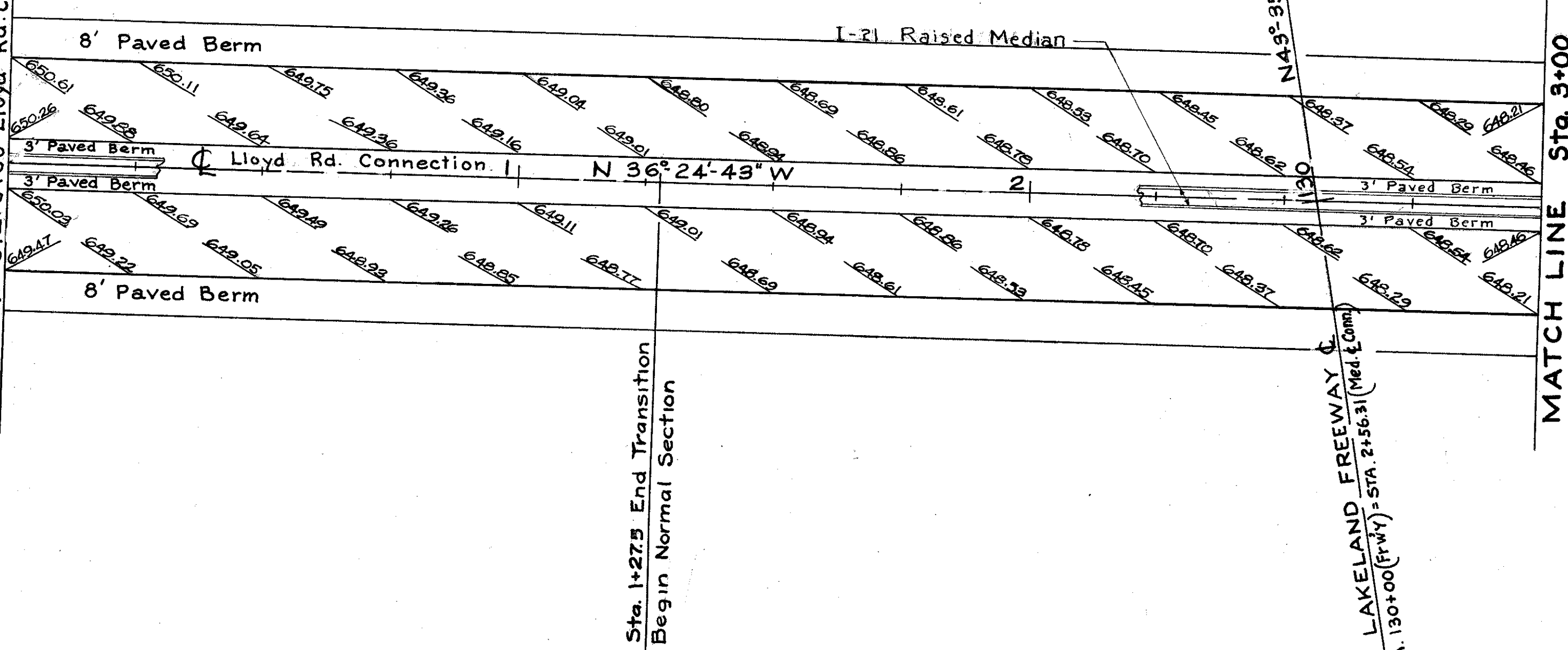
SCALE 1" = 20'

FED. RD. DIVISION	STATE	PROJECT	90 394
2	OHIO		

LAKE COUNTY  
LAK - 2 - 0.00

MATCH LINE  
(See Extra Area Detail Ramps  
No. 1 & 2 Part II Sht. No. 89)

Sta. 11+97.45 Median & (Back) = Sta. 0+00 Lloyd Rd. Connection (Ahead)



MATCH LINE Sta. 3+00

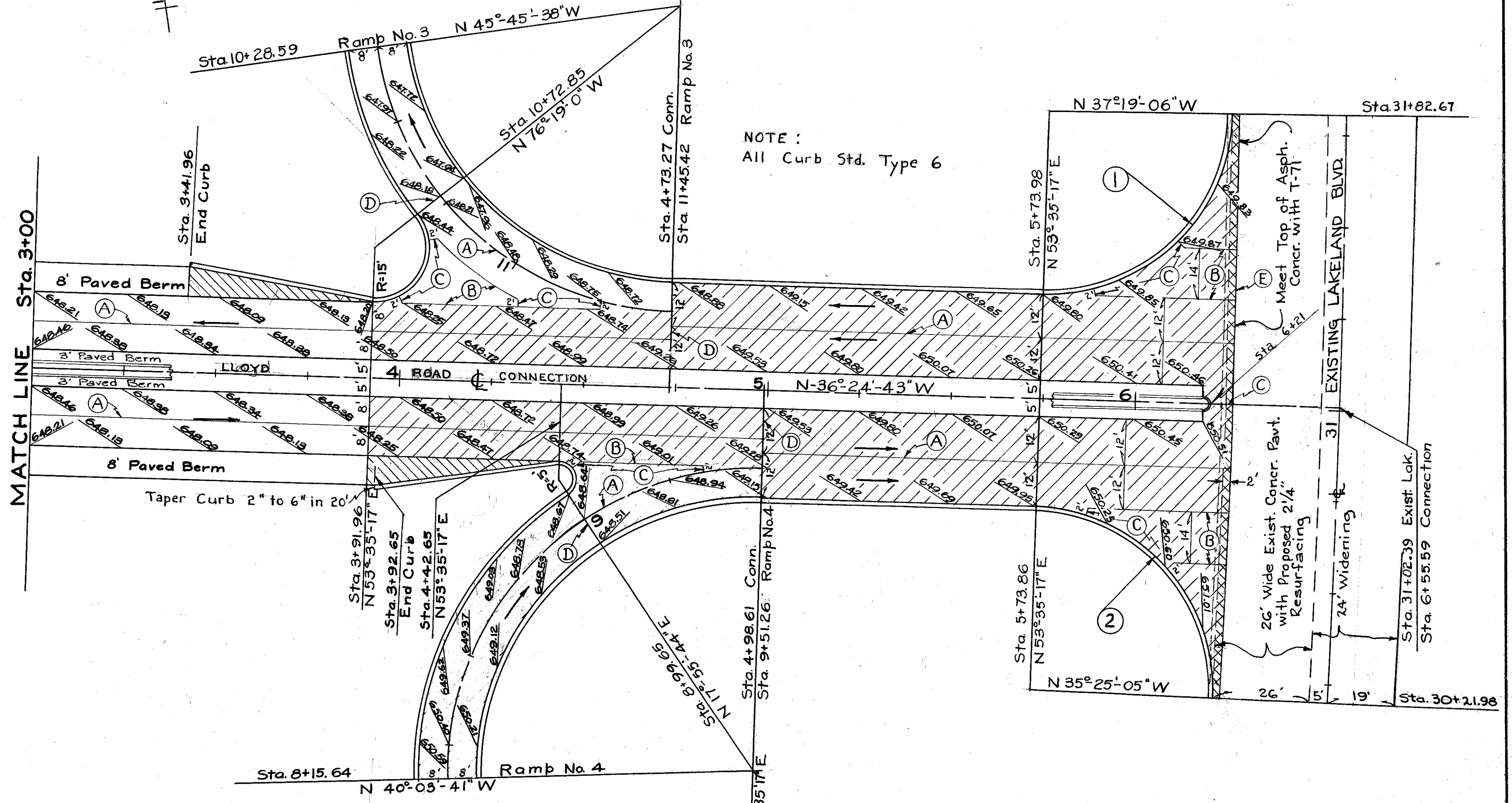
### LEGEND

- NEW PAVEMENT
- PAVED BERM
- REMOVE EXISTING PAVEMENT & REPLACE WITH NEW
- Standard Longitudinal Joint
- Standard Key Joint Without Tie Bars
- Expansion Joint Without Dowels
- Standard Expansion Joint
- Standard Expansion Bolt Joint

### CURVE DATA

- ①  $\Delta = 90^\circ 54' 23''$   
R = 50'  
T = 50.80'  
L = 79.33'  
Ch = 71.27'
- ②  $\Delta = 90^\circ 59' 38''$   
R = 50'  
T = 50.87'  
L = 79.41'  
Ch = 71.32'

NOTE:  
All Curb Std. Type 6



LOCATION	EXTRA AREA QUANTITIES						
	T-71 10' REINF. PORT. CEM. CONC. PAVT. SQ. YDS.	B-33 BITUMINOUS MACADAM BASE COURSE SQ. YDS.	I-22 SUBBASE CU. YDS.	I-18 STAB. CRUSHED AGGREGATE SHOULDER, APPROACH CU. YDS.	I-12 TYPE 6 CONC. CURB LIN. FT.	E-8 REM. # DISP. EXIST. PAVT. SQ. YDS.	E-8 REM. # DISP. EXIST. CURB LIN. FT.
3+41.96 to 3+91.96		22	4	4	50.7		
3+91.96 to 6+26.5	1202	23	204	4	226.7	36	160
TOTALS	1202	45	208	8	277.4	36	160

# EXTRA AREA DETAIL - LLOYD RD. INTERCHANGE CONNECTION