

EXTRA AREA DETAIL - RAMP N^o 2

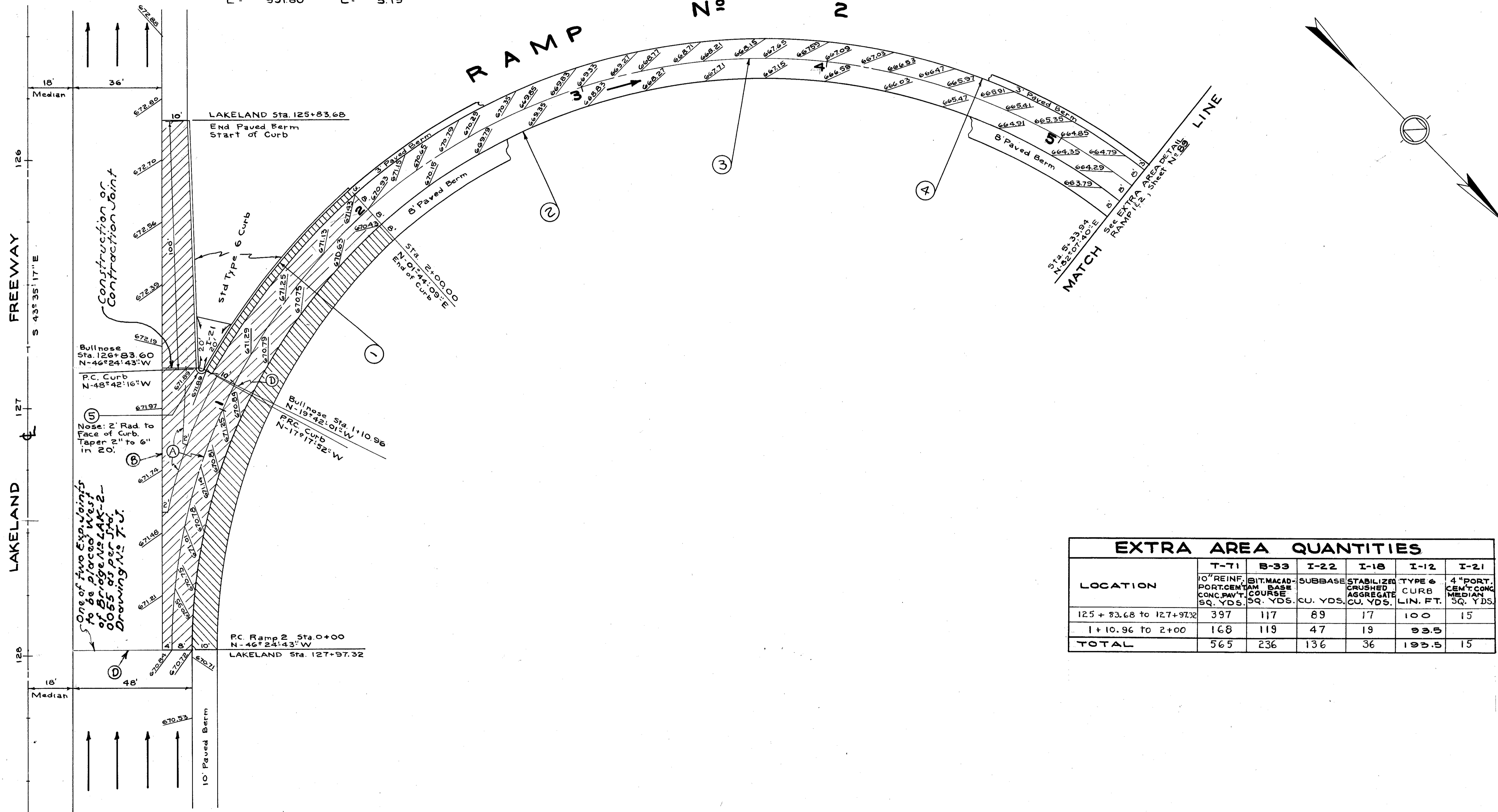
SCALE 1" = 20'

CURVE DATA

①	②	③
$\Delta = 19^{\circ}02'01''$	$\Delta = 280^{\circ}00'00''$	$\Delta = 280^{\circ}00'00''$
$R = 281.52'$	$R = 230.00'$	$R = 238.00'$
$T = 47.20'$	$L = 1123.99'$	$L = 1163.09'$
$L = 93.52'$		
$Ch = 93.09'$		
④	⑤	
$\Delta = 231^{\circ}51'08''$	$\Delta = 148^{\circ}35'36''$	
$R = 246.00'$	$R = 2.00'$	
$L = 991.80'$	$L = 5.19'$	

LEGEND

- NEW PAVEMENT
- PAVED BERM
- (A) Standard Longitudinal Joint
- (B) Standard Expansion Joint
- (C) Standard Key Joint without Tie Bars



LOCATION	T-71 10" REINF. PORT. CONC. SQ. YDS.	B-33 BIT. MACAD. BASE COURSE SQ. YDS.	I-22 SUBBASE CU. YDS.	I-18 STABILIZED CRUSHED AGGREGATE CU. YDS.	I-12 TYPE 6 CURB LIN. FT.	I-21 4" PORT. CONC. MEDIAN SQ. YDS.
125 + 83.68 to 127 + 97.32	397	117	89	17	100	15
1 + 10.96 to 2 + 00	168	119	47	19	93.5	
TOTAL	565	236	136	36	193.5	15