

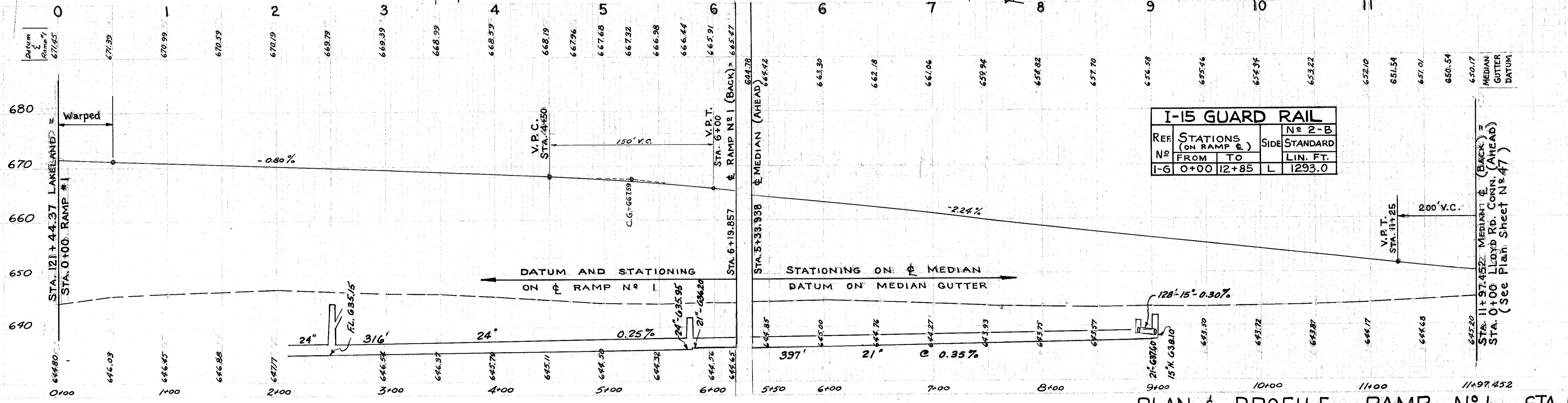
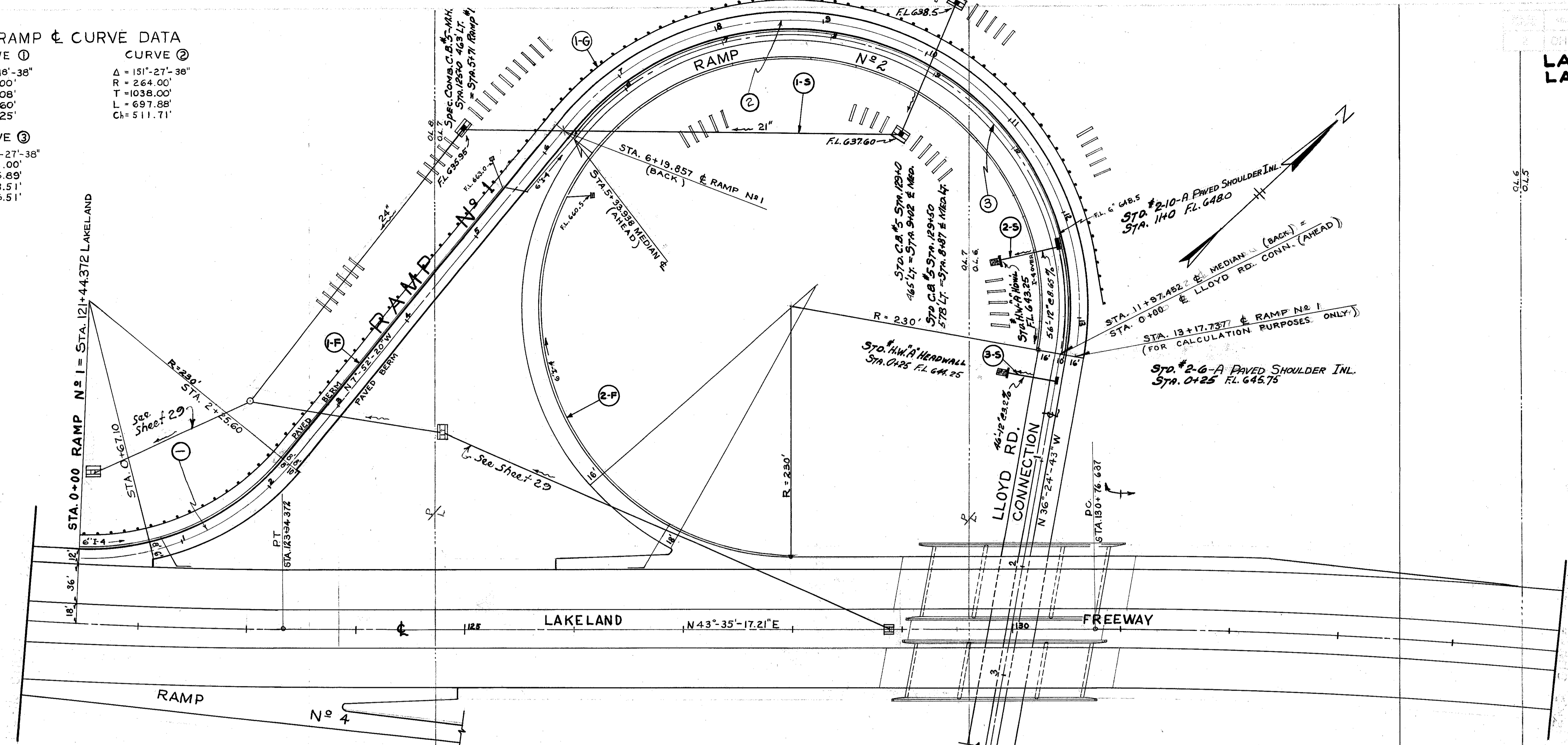
LAKE COUNTY
LAK. - 2-0.00

RAMP & CURVE DATA

CURVE ①
 $\Delta = 54^\circ-18'-38"$
 $R = 238.00'$
 $T = 122.08'$
 $L = 225.60'$
 $Ch = 217.25'$

CURVE ②
 $\Delta = 151^\circ-27'-38"$
 $R = 264.00'$
 $T = 1038.00'$
 $L = 697.88'$
 $Ch = 511.71'$

CURVE ③
 $\Delta = 151^\circ-27'-38"$
 $R = 251.00'$
 $T = 986.89'$
 $L = 663.51'$
 $Ch = 486.51'$



I-15 GUARD RAIL

REF. STATION	STATIONS (ON RAMP &)	NO. 2-B	SIDE STANDARD
I-G	0+00 12+85	L	1293.0

STORM SEWERS

REF. STATION	NO.	FROM TO	CLASS	UNDER PAVT	I-2	I-1	I-0	I-10	I-10	EACH	ST. 2-6	ST. 2-10	CONC. REINF. FOR STRUC.	CONC. REINF. FOR STRUC.	DUMP	NO.	
1-5	2150	9100	R	12"	40	50	68	347	316	1	2	1	3.2	146	5	6	
1-3	1100	1125	R	56"													
1-3	025	045	R	46"													
1-3	000	1197	R/L	102	40	50	68	347	316	1	2	1	6.4	292	10	297	
TOTALS					102	40	50	68	347	316	1	2	1	6.4	292	10	297

6" UNDERDRAINS

REF. STATION	FROM TO	NO.	UNDER PAVT	I-4	I-5	EACH
1-5	0+00	1197	R	2	1	1
1-5	0+00	1197	R	2	1	1
TOTALS				2428	20	3

PLAN & PROFILE RAMP No. 1 STA. 0+00 to STA. 11+97.45