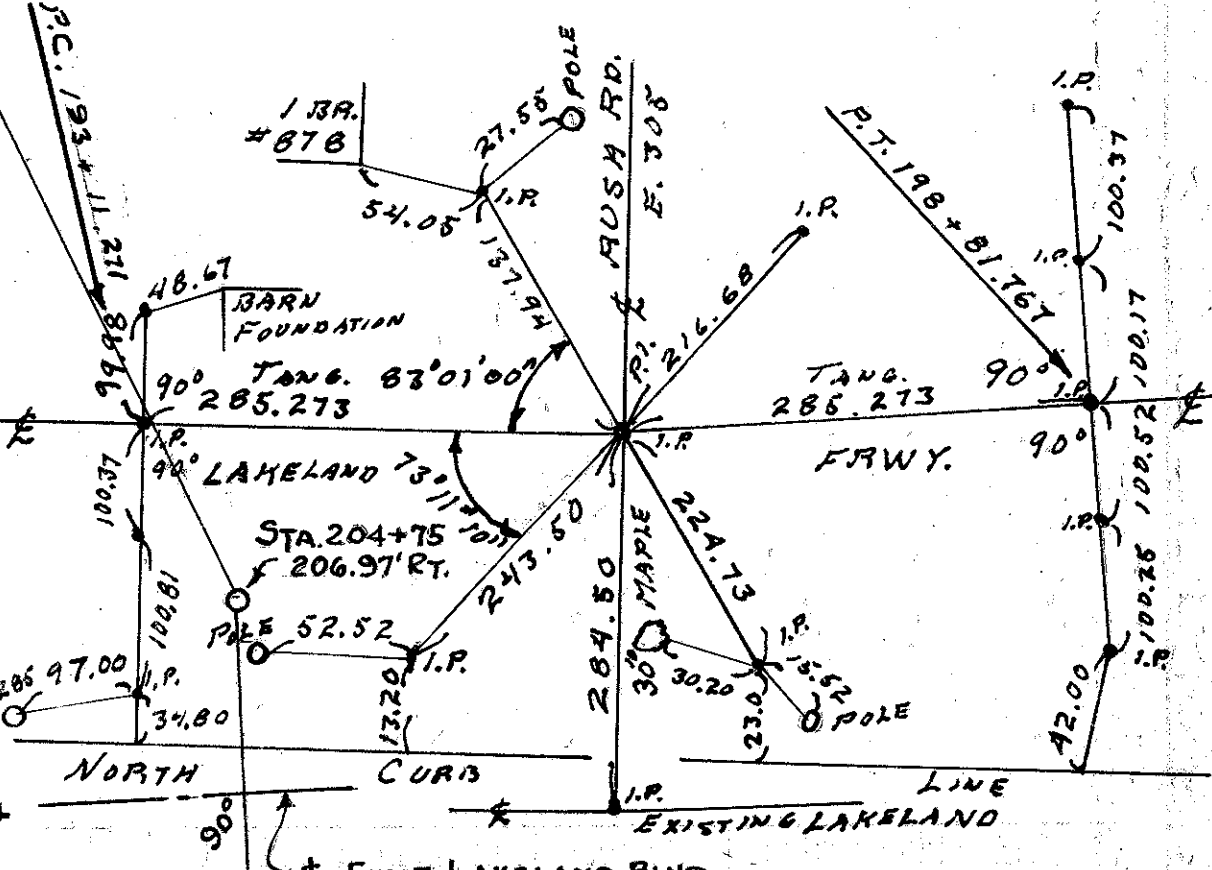
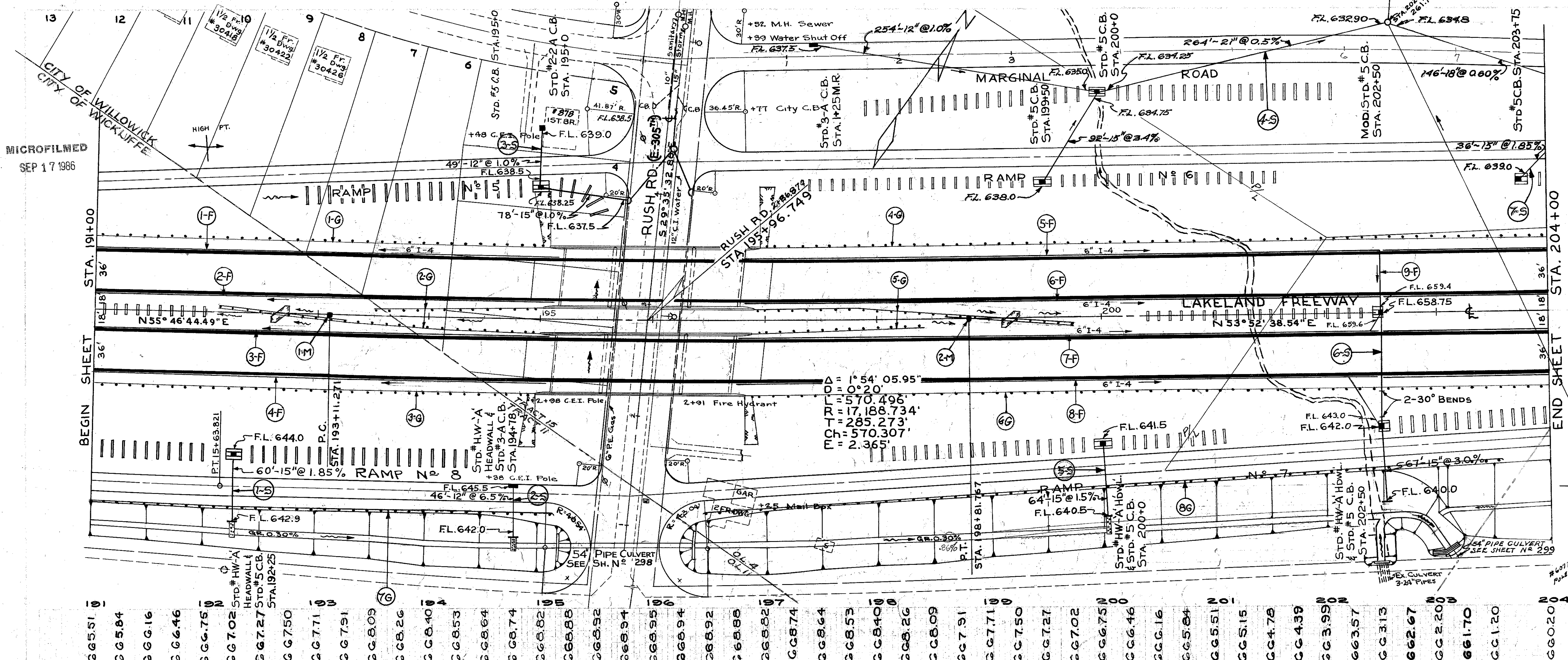


MICROFILMED
SEP 17 1986

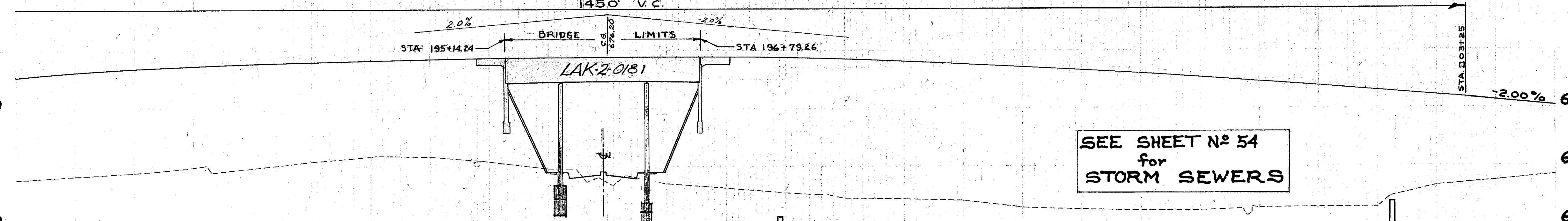
LAKE COUNTY
LAK.-2-0.00

35
394

PROPOSED STRUCTURE
 TYPE: continuous steel beams with reinforced concrete deck and reinforced concrete substructure
 SPANS: 44'-72.5'-44' c/c brgs.
 ROADWAY: two at 54' f/f of concrete parapet
 LOAD FREQUENCY: C.F. 2000 (ST)
 SKEW: 5'-35' L.F.
 WEARING SURFACE: 1" monolithic concrete.
 APPROACH SLABS: AS-1-54 (25' long)
 ALIGNMENT: 0°20' curve left
 SUPERELEVATION: none.



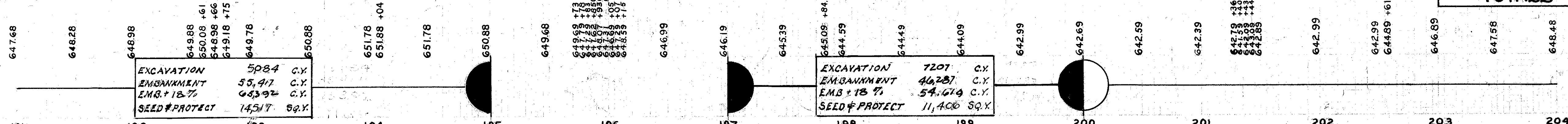
- 665.51
- 665.84
- 666.16
- 666.46
- 666.75
- 667.02
- 667.27
- 667.50
- 667.71
- 667.91
- 668.09
- 668.26
- 668.40
- 668.53
- 668.64
- 668.74
- 668.82
- 668.88
- 668.92
- 668.94
- 668.95
- 668.99
- 669.22
- 669.34
- 669.55
- 669.94
- 668.88
- 668.82
- 668.74
- 668.64
- 668.53
- 668.40
- 668.26
- 668.09
- 667.91
- 667.71
- 667.50
- 667.27
- 667.02
- 666.75
- 666.46
- 666.16
- 665.84
- 665.51



LOCATION	I-9 No. 2 Stone Underdrains Lin. Feet	I-10 Conc. Paved Slopes Square Yds.
RUSH ROAD		
Sta. 2+05 to 3+70 L	165	343
Sta. 2+05 to 3+70 R	165	342
TOTALS	330	1085

I-15 GUARD RAIL		No. 2-B	
REF. NO.	STATIONS	STANDARD	BARRIER
1-G	191+00 TO 195+05	405.0	
2-G	192+10 TO 195+00	325.0	112.5
3-G	191+00 TO 194+95	395.5	
4-G	196+95 TO 204+00	704.0	
5-G	196+90 TO 197+80	325.0	112.5
6-G	196+85 TO 204+00	720.0	
7-G	191+00 TO 195+10	412.5	
8-G	196+50 TO 203+55	712.5	
TOTALS		3999.5	225.0

6" UNDERDRAINS										
REF. NO.	STATION	SIDE	I-4 LIN. FT.		I-5 EACH		I-2 LIN. FT.		LIN. FT.	
			SHALLOW	DEEP	8"X8" BEND	8"X8" TEE	8" UNDER	8" OUTLET		
1-F	191+00 TO 195+20	L	414							
2-F	191+00 TO 195+15	L	410							
3-F	191+00 TO 195+10	R	406							
4-F	191+00 TO 195+05	R	404							
5-F	196+85 TO 204+00	L	712							
6-F	196+80 TO 204+00	L	710							
7-F	196+78 TO 204+00	R	724							
8-F	196+72 TO 204+00	R	758							
9-F	203+50	L						48	6	
TOTALS			4538	18				2	48	6



MONUMENT BOXES		
ITEM NO.	STATION	MONUMENT BOX ASSEMBLY TYPE A TYPE B
1-M	PC 193+11.27	1
2-M	PT 198+81.77	1
TOTALS		2

PLAN & PROFILE LAKELAND FREEWAY STA. 191+00 TO STA. 204+00