

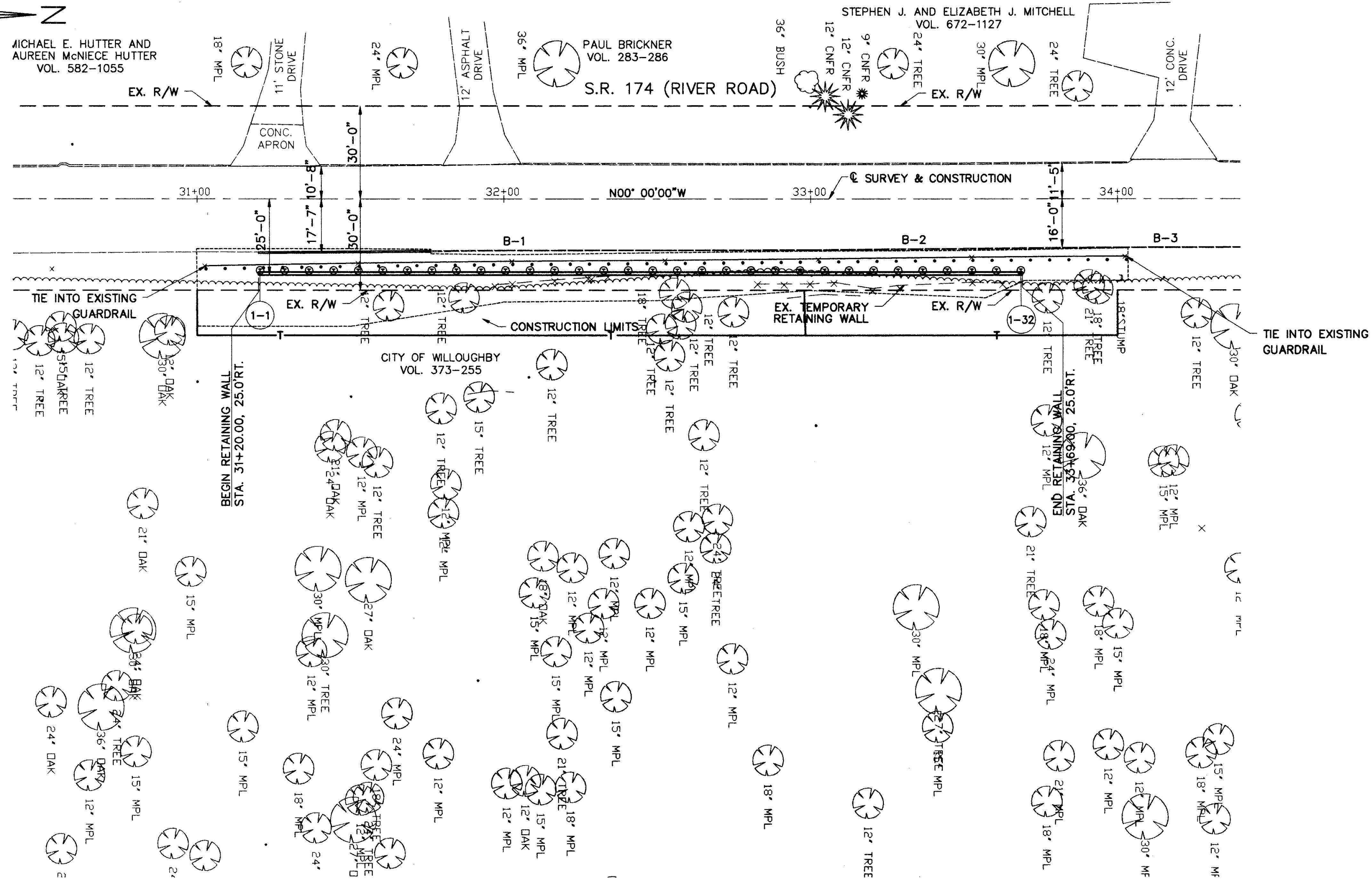


MICHAEL E. HUTTER AND
AUREEN McNICIE HUTTER
VOL. 582-1055

PAUL BRICKNER
VOL. 283-286

STEPHEN J. AND ELIZABETH J. MITCHELL
VOL. 672-1127

S.R. 174 (RIVER ROAD)



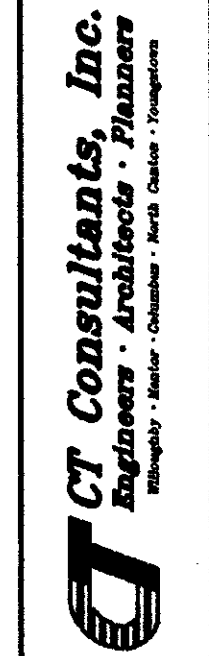
GENERAL QUANTITIES FOR RETAINING WALL

ITEM	QUANTITY	UNITS	DESCRIPTION
503	61	CU. YDS.	UNCLASSIFIED EXCAVATION, AS PER PLAN
524	480	LIN. FT.	DRILLED SHAFT, 30" DIAMETER
509	7,953	POUND	REINFORCING STEEL, GRADE 60, EPOXY COATED
511	97	CU. YDS.	CLASS C CONCRETE, RETAINING WALL
513	45,049	POUND	STRUCTURAL STEEL (ASTM 36)
513	896	EACH	WELDED SHEAR STUD
690	855	SQ. FT.	PREFABRICATED GEOCOMPOSITE IN-PLANE DRAIN
690	279	EACH	4" x 12" x 7'-10" TIMBER

THESE QUANTITIES HAVE BEEN CARRIED TO GENERAL SUMMARY SHEET 13-14.

NOTES:
FOR RETAINING WALL TYPICAL SECTION SEE SHEET 2-3.
FOR PLAN AND PROFILE SEE SHEET 15-17.
FOR CROSS SECTIONS SEE SHEETS 18-29.
FOR RETAINING WALL DETAILS SEE SHEET 30-36.
FOR ELEVATION OF WALL SEE SHEET 33.
FOR SOIL BORING LOGS SEE SHEETS 38-42.

DATE: 09-19-96 - TIME: 14:50 - H:\CT\93119\CA02\9311920A.DWG



DATE: 7/94
REVIEWED: J.E.A.
STRUCTURE FILE NUMBER

DRAWN: 7/94
REVISION

DESIGNED: 7/94
CHECKED: 4/94

LAKE COUNTY
STA. 30+50
STA. 34+50

SITE PLAN
RETAINING WALLS
ALONG S.R. 174

LAK - 174 - 4.39

1 / 7

30
47