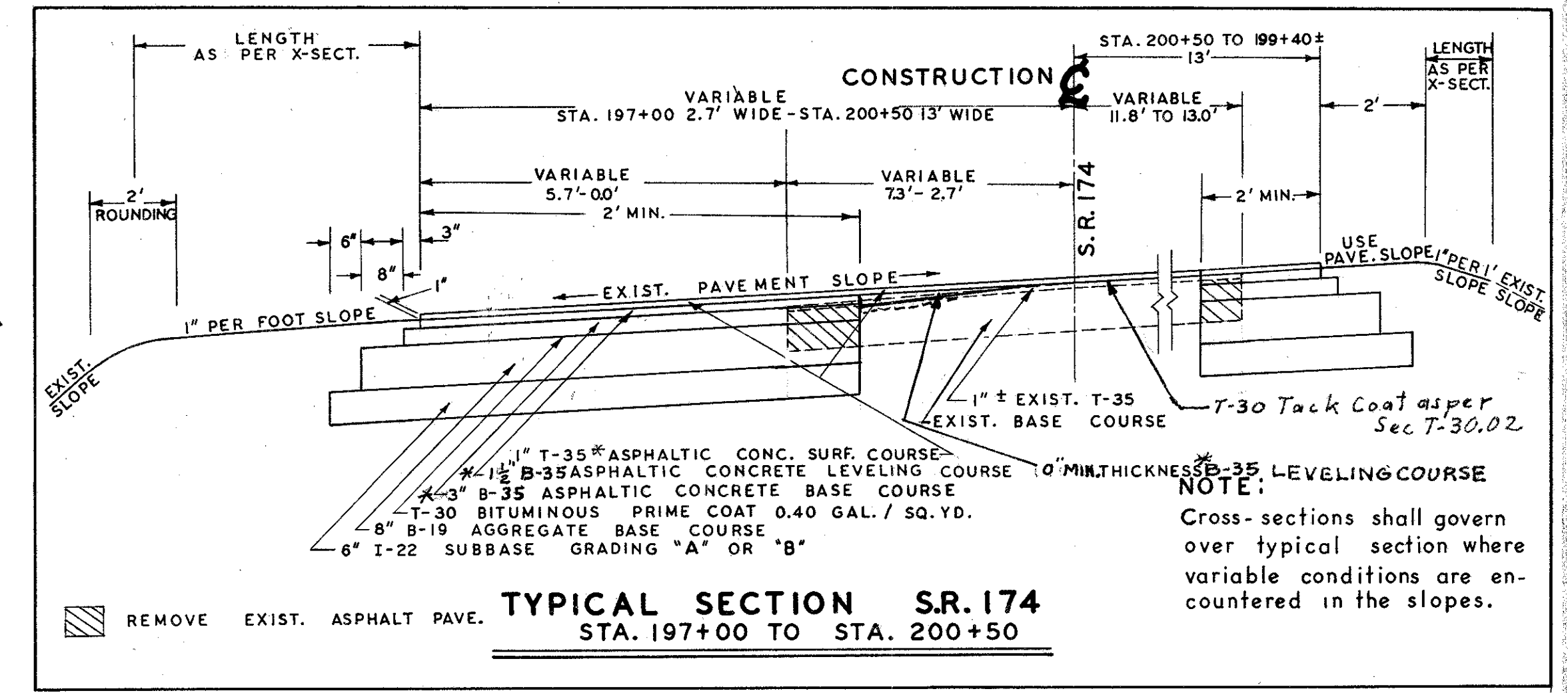


LEFT PAVE. EDGE CURVE DATA
(STA. 197+26.92 TO STA. 200+50)

R = 146.50'
Δ = 16°-00'-40"
T = 161.24'
L = 320.39'
D = 319.34'
D = 4°-59'-51"

CURVE DATA

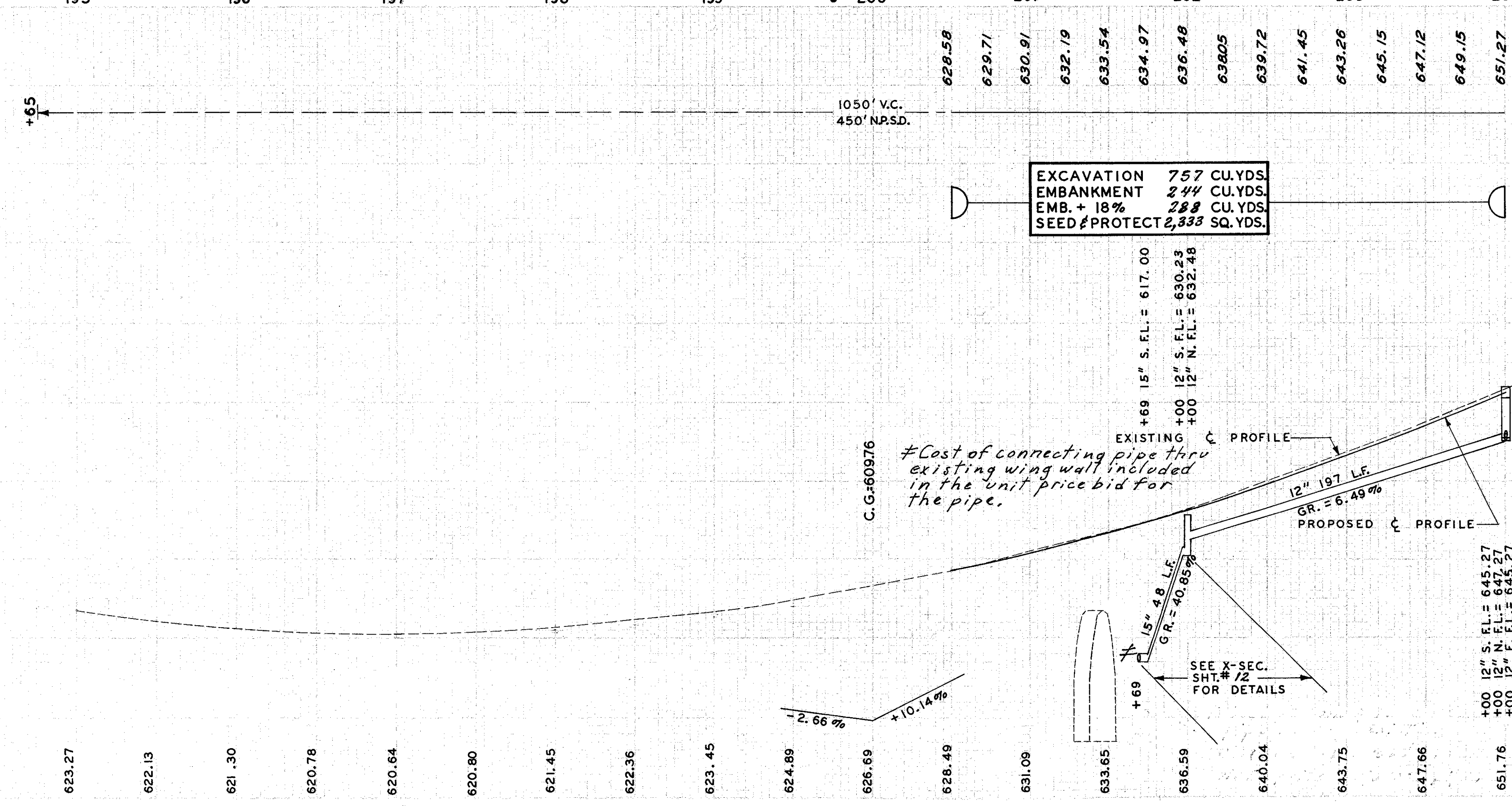
R = 901.72'
Δ = 73°-38'-48"
T = 175.13'
L = 159.00'
C.H. = 1080.87'
D = 6°-21'-15"



TYPICAL SECTION S.R. 174
STA. 197+00 TO STA. 200+50

NOTE: Cross-sections shall govern over typical section where variable conditions are encountered in the slopes.

* Penetration Range (70-85). Thicknesses shown are "designed" thicknesses as described in Sections T-35.01 and B-35.01



PAVEMENT

STATION	T-30	T-35	B-35	B-19	I-22	T-30		
	BITUM. PRIME COAT 0.40 GAL./SQ. YD.	1" ASPH. CONC. SURFACE COURSE	ASPH. CONC. LEVELING COURSE (VARIABLE)	3" ASPH. CONC. BASE COURSE	8" AGGREGATE BASE COURSE	6" SUBBASE GRADING "A" OR "B"	BITUM. TACK COAT 0.10 G./SQ. YD.	
FROM TO	GAL.		CU. YDS.			GAL.		
WILLOUGHBY HILLS VILLAGE	197+00 200+50	15.3	23.7	7.6	12.7	41.2	34.9	70

DRAINAGE QUANTITIES

REF. NO.	STATION	I-1		I-5	I-8	
		12" CLASS J-1 ST. SEWER	15" CLASS F-4 ST. SEWER	15" CLASS F-4 PIPE SPECIAL	STD. NO. 2-2-A C.B.	STD. NO. 3-A C.B.
660						
650	FROM TO	LIN. FT.			EACH	
WILLOUGHBY HILLS VILLAGE	I-S 201+69 201+97	48		2		
CITY OF WILLOUGHBY	I-S 201+97 204+00	221			1 2	

GUARD RAIL

REF. NO.	STATION	SIDE	I-15	
			GUARD RAIL STD. STEEL BEAM TYPE (DEEP)	GUARD RAIL REMOVED DISPOSED
	FROM TO		LIN. FT.	
	I-G 199+50 200+62	L	112.5	80
	2-G 200+00 201+97	R	200	190
	3-G 201+60 201+97	L	36	70
WILLOUGHBY HILLS VILLAGE	TOTALS		348.5	340
	2-G 201+97 203+93	R	200	203
CITY OF WILLOUGHBY	3-G 201+97 204+00	L	200	406
	TOTALS		400	609

DRIVEWAY QUANTITIES

REF. NO.	E-1		
	EXCAVATION	5" AGGREGATE BASE COURSE	2" ASPHALTIC CONCRETE SURFACE COURSE
I-D	22.6	22.8	9.1
WILLOUGHBY HILLS VILLAGE			

S.R. 174 PLAN PROFILE STA. 195+00 TO STA. 204+00