

CONSTANCE E. NASH ETAL 1/2
VOL. 899 PG. 896
VOL. 859 PG. 1132
VOL. 884 PG. 930

JAMES B. & PATRICIA A. FROST
VOL. 131 PG. 40

BENCHMARK: LAKE COUNTY MONUMENT U-51, LOCATED
AT THE SOUTHEAST INTERSECTION OF
S.R. 174 (RIVER ROAD) AND EAGLE ROAD
IN FRONT OF HOUSE NO. 2551 RIVER ROAD
ELEVATION 795.66

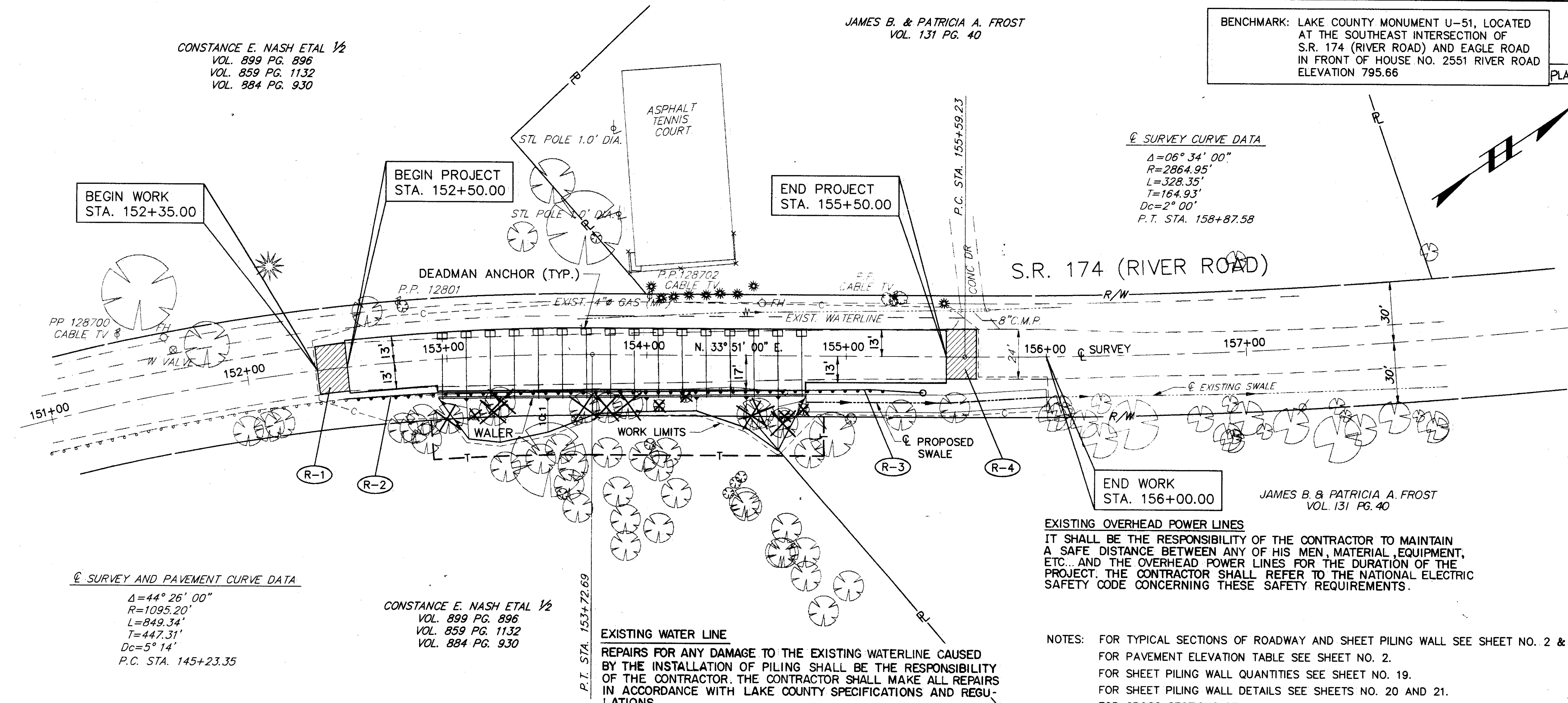
CALC.
BY R.L.B.
DATE 6/92
CHKD.
BY D.J.M.
DATE 6/92

LAK-174-2.90
LAKE COUNTY

OHIO
FHWA 5
REGION

10
26

PLAN NO. I2D10046



△ SURVEY CURVE DATA
Δ=06°34'00"
R=2864.95'
L=328.35'
T=164.93'
Dc=2°00'
P.T. STA. 158+87.58

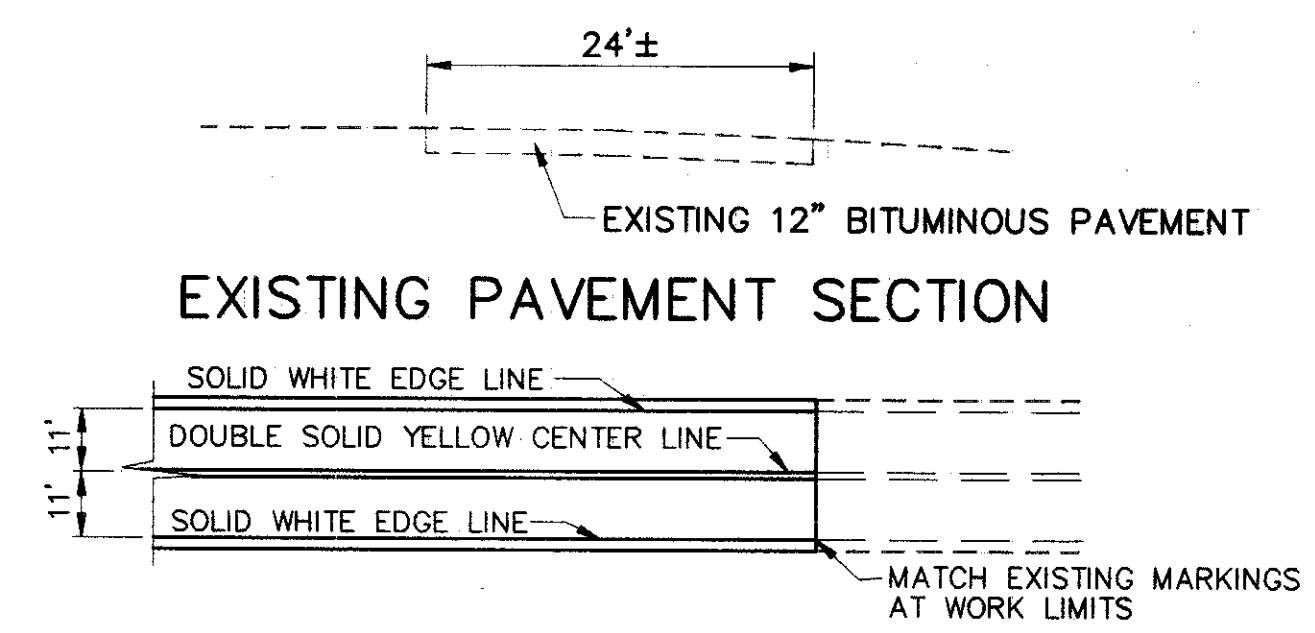
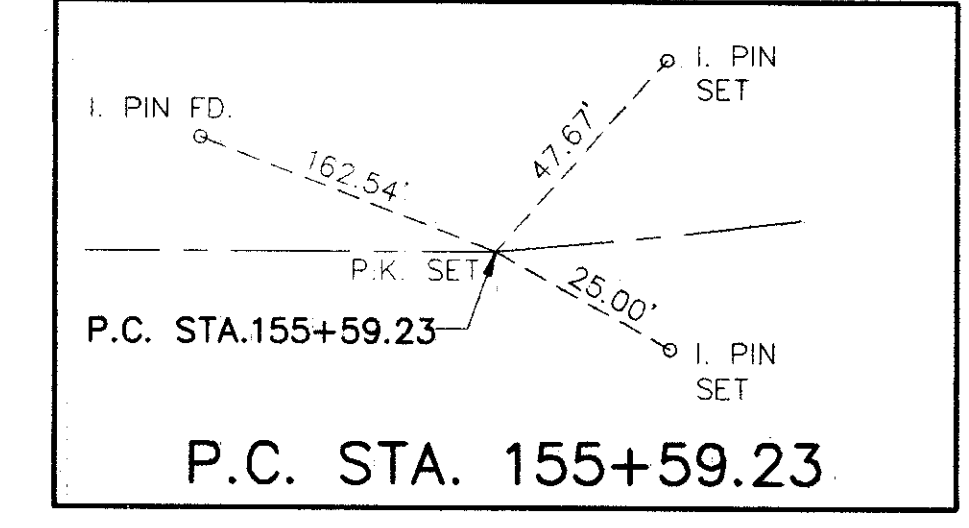
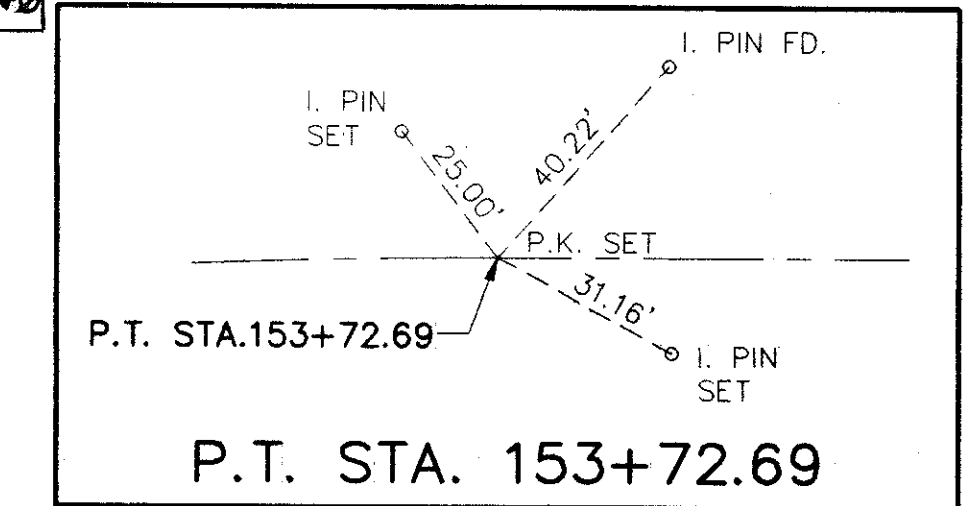
△ SURVEY AND PAVEMENT CURVE DATA
Δ=44°26'00"
R=1095.20'
L=849.34'
T=447.31'
Dc=5°14'
P.C. STA. 145+23.35

CONSTANCE E. NASH ETAL 1/2
VOL. 899 PG. 896
VOL. 859 PG. 1132
VOL. 884 PG. 930

EXISTING WATER LINE
REPAIRS FOR ANY DAMAGE TO THE EXISTING WATERLINE CAUSED BY THE INSTALLATION OF PILING SHALL BE THE RESPONSIBILITY OF THE CONTRACTOR. THE CONTRACTOR SHALL MAKE ALL REPAIRS IN ACCORDANCE WITH LAKE COUNTY SPECIFICATIONS AND REGULATIONS.

EXISTING OVERHEAD POWER LINES
IT SHALL BE THE RESPONSIBILITY OF THE CONTRACTOR TO MAINTAIN A SAFE DISTANCE BETWEEN ANY OF HIS MEN, MATERIAL, EQUIPMENT, ETC., AND THE OVERHEAD POWER LINES FOR THE DURATION OF THE PROJECT. THE CONTRACTOR SHALL REFER TO THE NATIONAL ELECTRIC SAFETY CODE CONCERNING THESE SAFETY REQUIREMENTS.

NOTES: FOR TYPICAL SECTIONS OF ROADWAY AND SHEET PILING WALL SEE SHEET NO. 2 & 3.
FOR PAVEMENT ELEVATION TABLE SEE SHEET NO. 2.
FOR SHEET PILING WALL QUANTITIES SEE SHEET NO. 19.
FOR SHEET PILING WALL DETAILS SEE SHEETS NO. 20 AND 21.
FOR CROSS SECTIONS SEE SHEETS NO. 11 THRU 18.



PAVEMENT MARKINGS

REF.	ROADWAY LOCATION	SIDE	SQ. YD.	LIN. FT.				TOTALS
				LT. & RT.	RT.	RT.	LT. & RT.	
802	BARRIER REFLECTOR, TYPE A	EACH						5
	ANCHOR ASSEMBLY, TYPE A	EACH						1
606	GUARDRAIL, TYPE 5 WITH TUBULAR BACKUP	LIN. FT.			200			200
	GUARDRAIL, TYPE 5	LIN. FT.			62.50			62.50
	GUARDRAIL REMOVED	LIN. FT.		222				222
202	WEARING COURSE REMOVED	SQ. YD.	40					40

