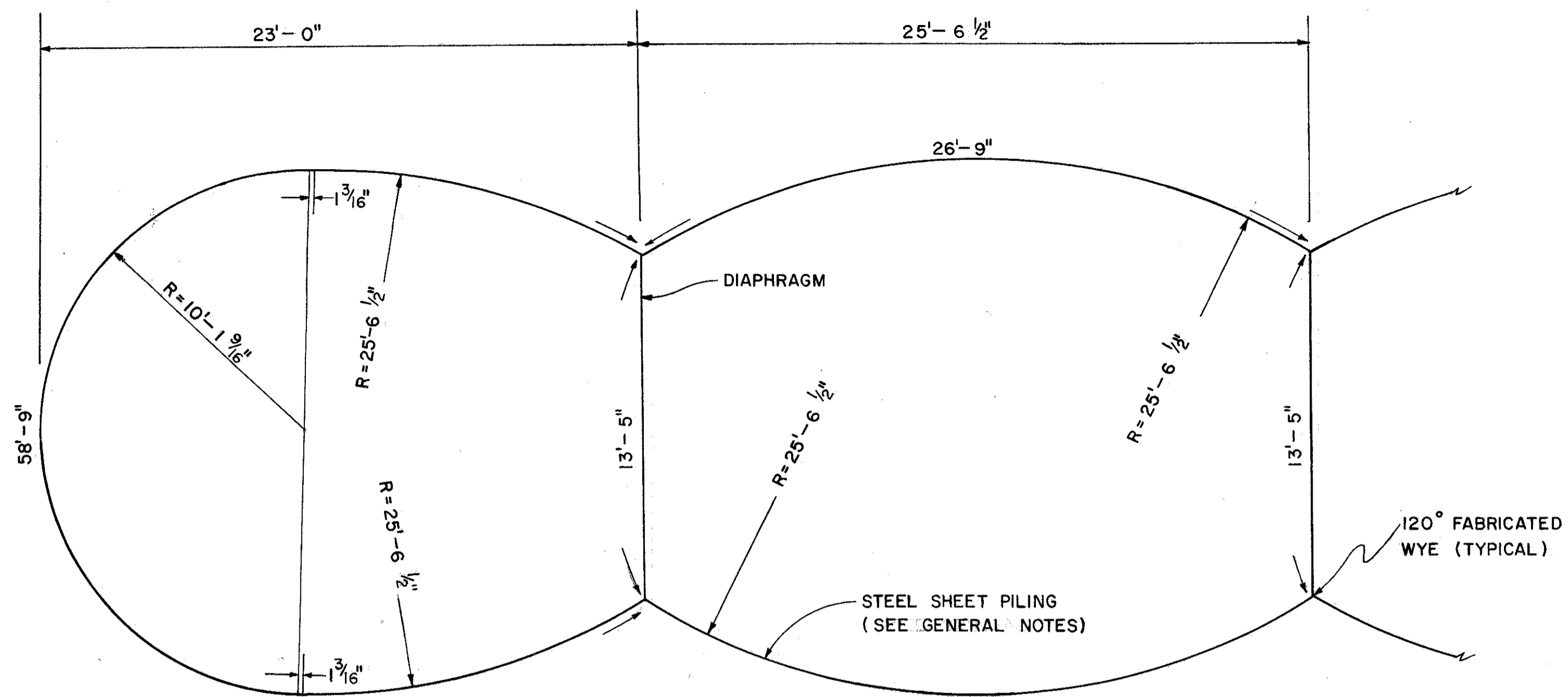


FHWA REGION	STATE	PROJECT	
5	OHIO		

LAKE COUNTY
LAK-174-2.72

TYPICAL COFFERDAM

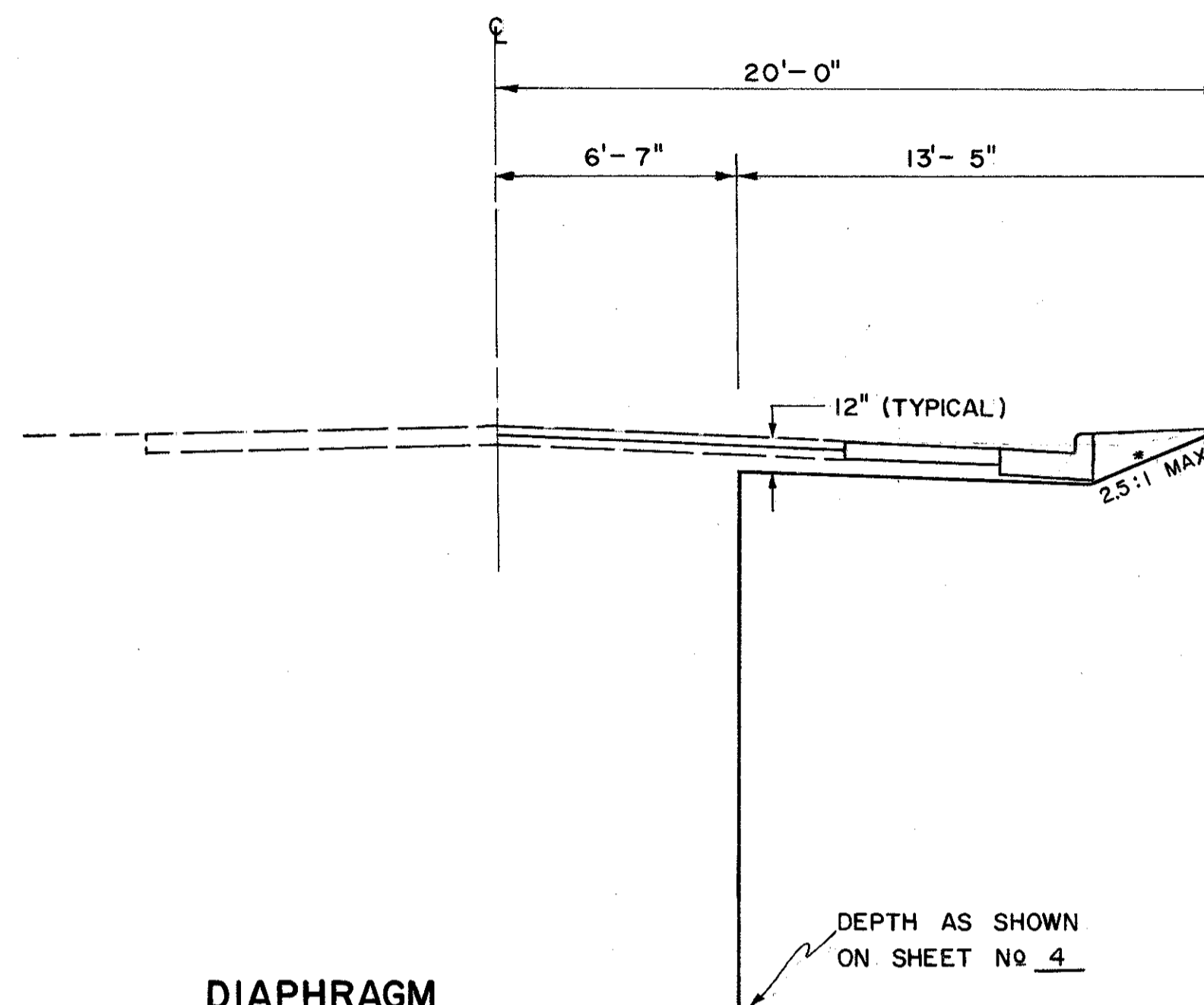
SCALE: 1/4" = 1'



PLAN

END CELL

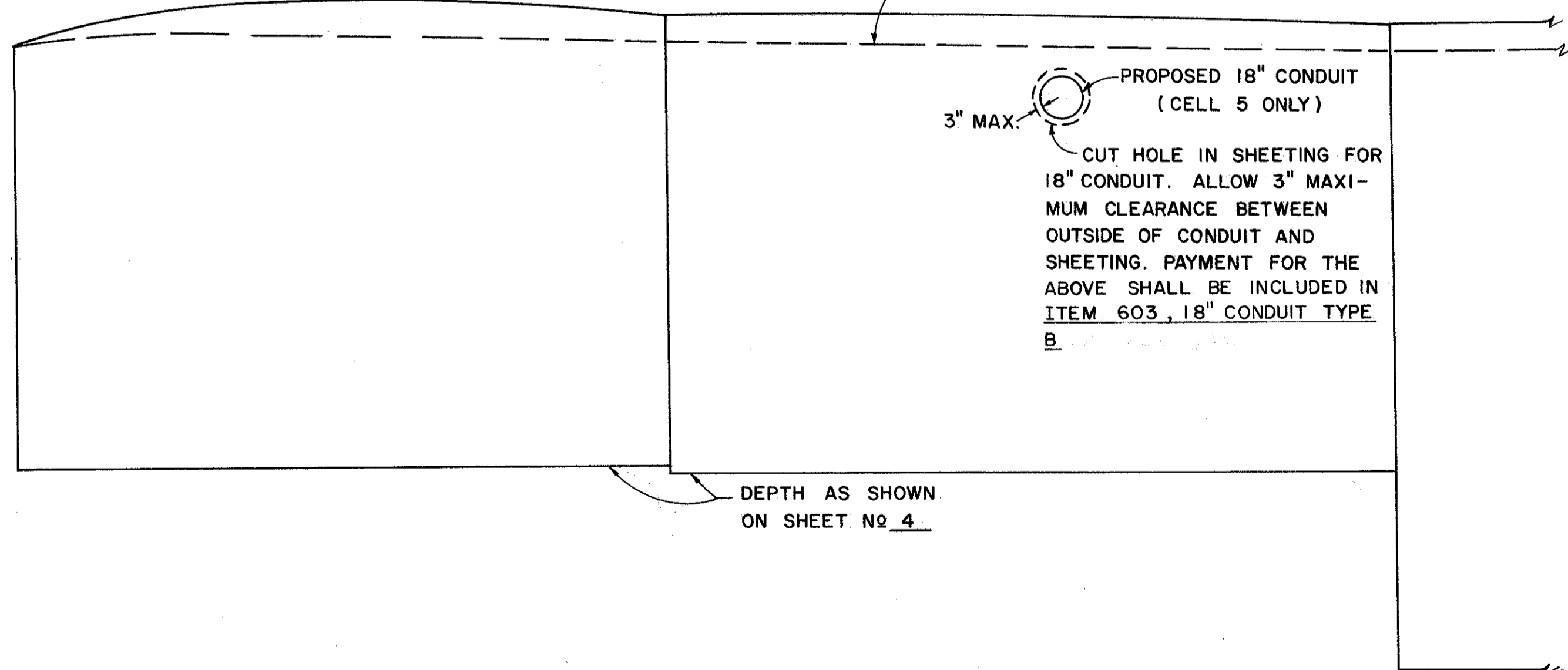
MIDDLE CELL



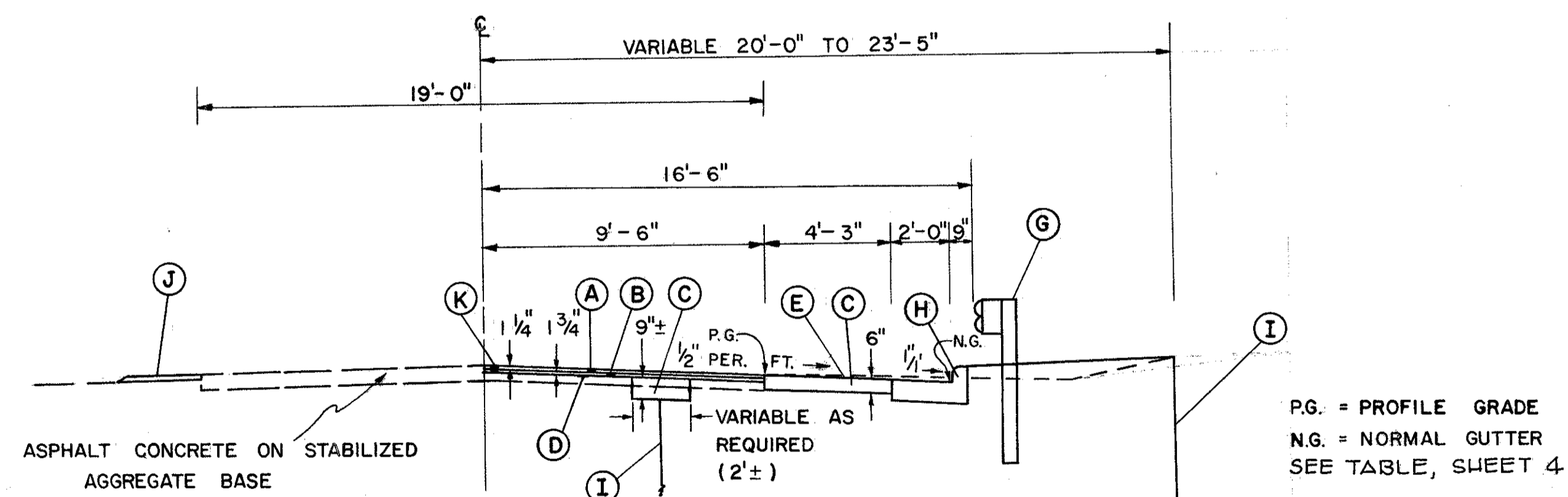
DIAPHRAGM

EASTERLY SIDE ELEVATIONS
AS SHOWN ON SHEET No 4

WESTERLY SIDE, 12"
BELOW FINISHED GRADE



PROFILE



TYPICAL SECTION S.R. 174

SCALE: 1/4" = 1'
TYPE 404

- (A) - ITEM 404 - ASPHALT CONCRETE, AC-20
- (B) - ITEM 402 - ASPHALT CONCRETE, AC-20
- (C) - ITEM 301 - BIT. AGGR. BASE; 702.01, AC-20; OR 702.09, RT-11 OR RT-12
- (D) - ITEM 408 - BIT. PRIME COAT; 702.09, RT-2 OR RT-3; 702.02, MC-30 OR MC-70; 702.03, PRIMER 20; APPLIED AT THE RATE OF 0.40 GAL./S.Y. AND COVER AGGR. @ 0.008 C.Y./S.Y.
- (E) - ITEM 409 - SEAL COAT, USING 0.008 CU.YD. NO 8 COVER AGGREGATE PER SQ.YD. AND 0.30 GAL. BITUMINOUS MATERIAL; 702.09, RT-9 OR RT-10; 702.02 MC-800 OR MC-3000; 702.04, RS-1, RS-2, CRS-1 OR CRS-2; OR 702.03 CBAE-800.
- (G) - ITEM 606 - GUARD RAIL REBUILT, TYPE 5
- (H) - ITEM 609 - COMBINATION CURB & GUTTER, TYPE 2
- (I) - ITEM 504 - STEEL SHEET PILING LEFT IN PLACE
- (J) - ITEM 410 - TRAFFIC COMPACTED SURFACE, TYPE C
- (K) - ITEM 202 - WEARING COURSE REMOVED