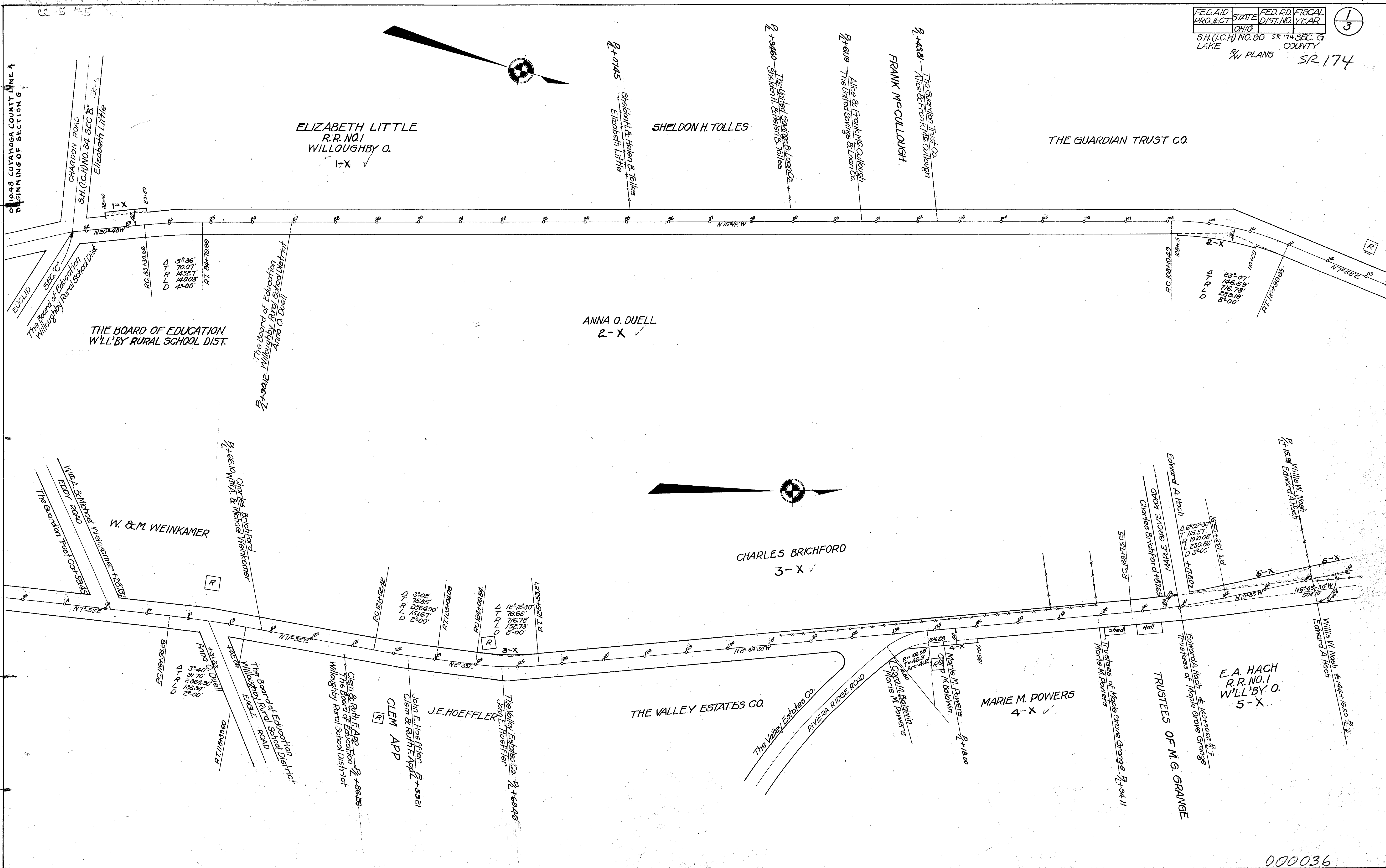


FED. AID PROJECT	STATE	FED. RD. DIST. NO.	FISCAL YEAR
	OHIO		

S.H. (I.C.H.) NO. 90 SR 174 SEC. G COUNTY LAKE RW PLANS SR 174

1
3



5

CC-5 #5

ON 048 CUYAHOGA COUNTY LINE 4
BEGINNING OF SECTION 6

ELIZABETH LITTLE
R.R. NO. 1
WILLOUGHBY O.
1-X

SHELDON H. TOLLES

THE GUARDIAN TRUST CO

ANNA O. DUELL
2-X

THE BOARD OF EDUCATION
W'LL'BY RURAL SCHOOL DIST.

CHARLES BRICHFORD
3-X

W. & M. WEINKAMER

MARIE M. POWERS
4-X

E. A. HACH
R.R. NO. 1
WILL'BY O.
5-X

THE VALLEY ESTATES CO.

TRUSTEES OF M. G. GRANGE
Edward A. Hach & Associates P.L.
Trustees of Maple Grove Grange

ANNA O. DUELL
3-X
D 110
L 12834.34
A 31.70
S 3.40

CLEM APP
John E. Hoefler P-73321
Clem & Ruth F. App P-73321
The Board of Education
Willoughby Rural School District

J.E. HOFFLER
John E. Hoefler P-73321

MARIE M. POWERS
CORP. M. Baldwin
Marie M. Baldwin P-73411

Marie M. Powers
Trustees of Maple Grove Grange P-73411