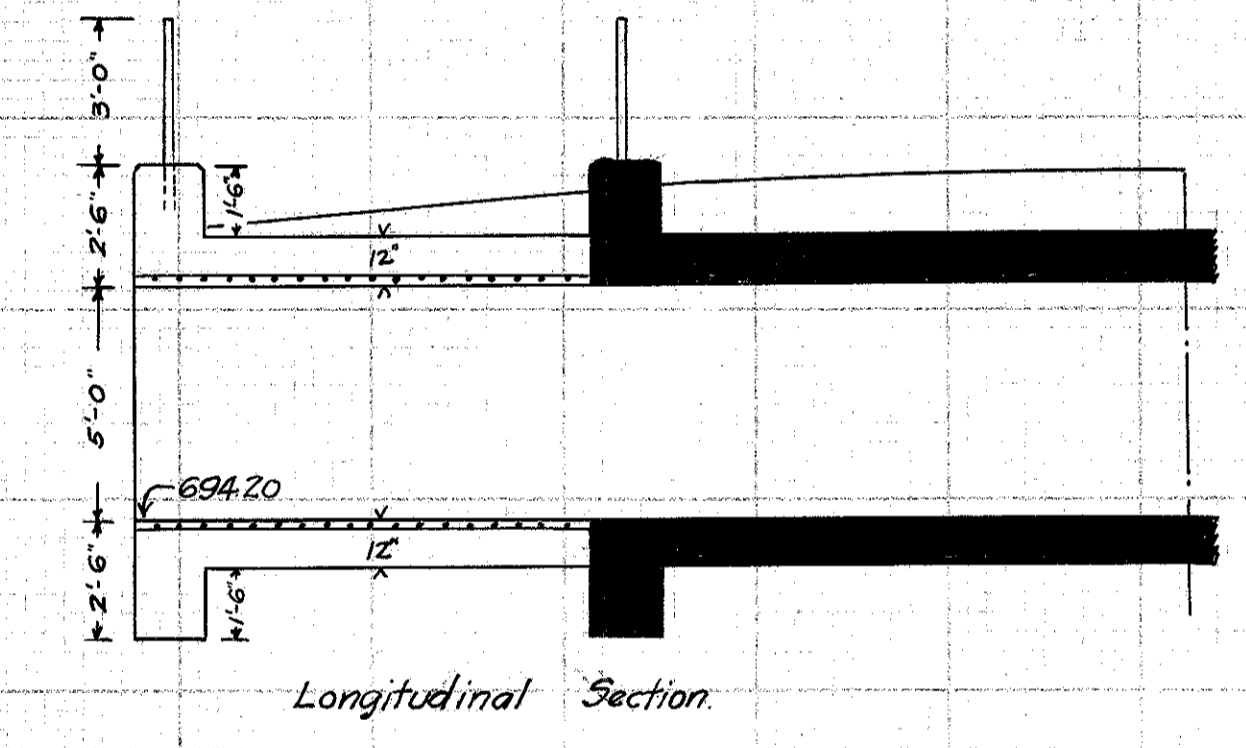


Steel List

No. Required	Mark	Size	Length	Spaced
36	S6	7/8" φ	10'-0"	6" ctrs
26	T4	5/8" φ	9'-6"	12" ctrs
20	Y4	5/8" φ	6'-3"	12" ctrs
Total Weight = 1124*				

Scale: 1/4" = 1'

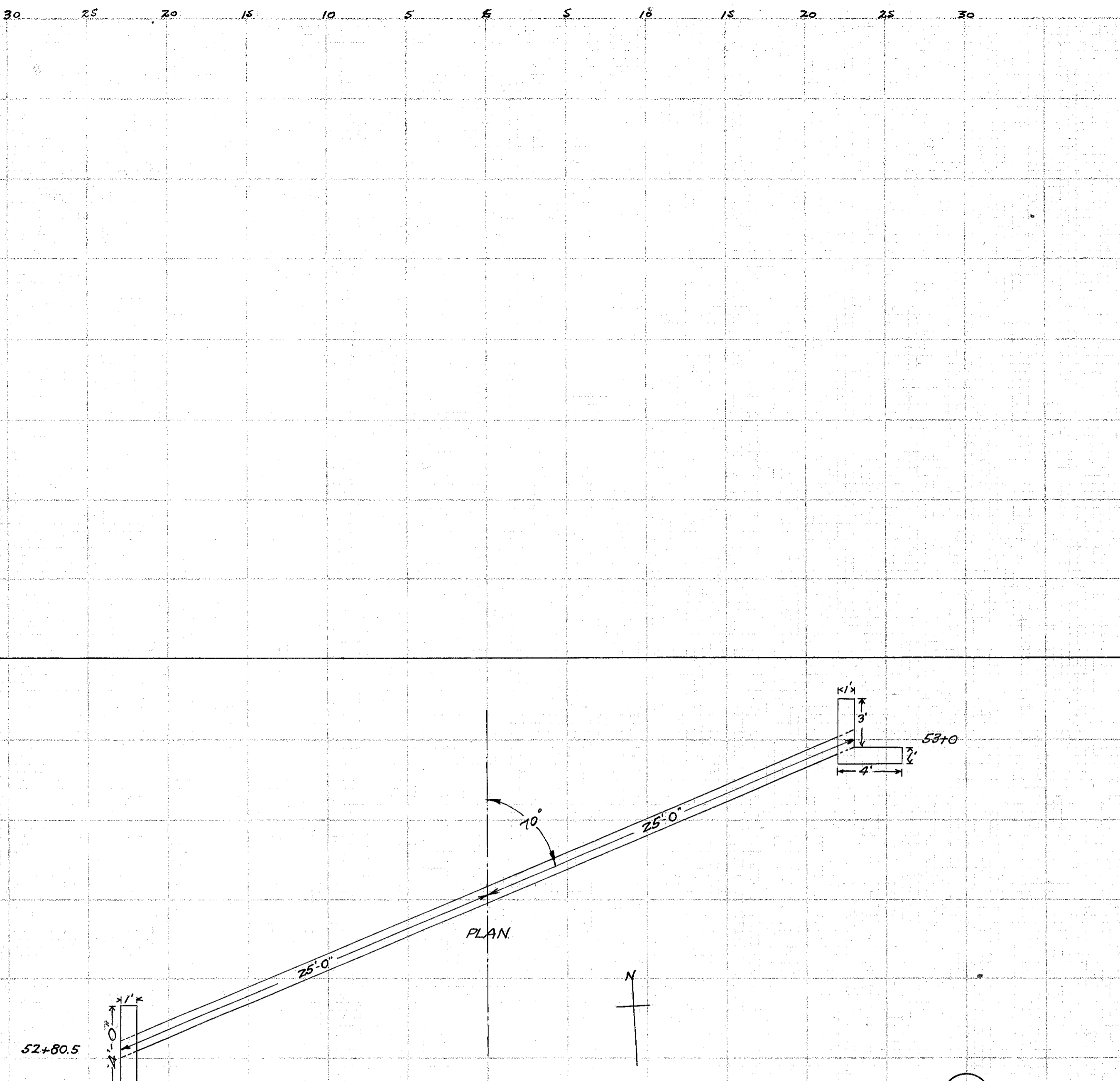


CULVERT DATA

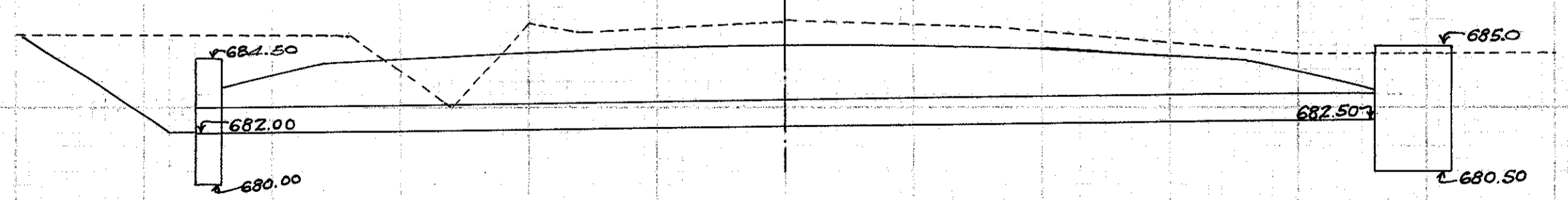
Type: Concrete box culvert, extension -  
 Size: 8' x 5' x 3'-6"  
 Work Req: Remove pres. parapet and extend existing 8' x 5' con. box culvert 3'-6" to L, resetting pres. 2 Galv. pipe rail in new parapet. Remove + relay pres. stone wall at L end of new extension. Clean out present culvert + ditch to R. Open new channel on L.  
 Drawn by: Plummer + Beebe  
 Date: 2/28/30  
 Checked by: [Signature]  
 Date: 3-5-30  
 DWL Div'n. Engr.

EST. QUANTITIES

Exc. 1070 cu.yds.  
 Conc. 1-5/2 20.7 cu.yds.  
 Reinf. Steel 1124 lbs  
 Con. Parapet removed 1.5 cu.yds.  
 Stone Masonry removed + relaid 5.3 cu.yds.  
 2" Galv. Pipe Rail. removed + reset 15.5 lin. ft.  
 to be painted Sta 64+23



7



CULVERT DATA

Type: Std. Roadway Culv., Skewed - Std. Dwg. S-27 P.C. 142  
 Size: 12' x 50'  
 Work Req: Remove pres. corr. pipe + lay 12' x 50' Rdwy. culvert. Std. HW on L. L HW on R.

EST. QUANTITIES

Exc. 170 cu.yds.  
 12" Pipe 50 lin. ft.  
 1-5/2 conc. 1.8 cu.yds.  
 Reinf. Steel 59 lbs

Sta. 52+90

Drawn by: Plummer + Beebe  
 Date: 2/27/30  
 DWL  
 3-5-30