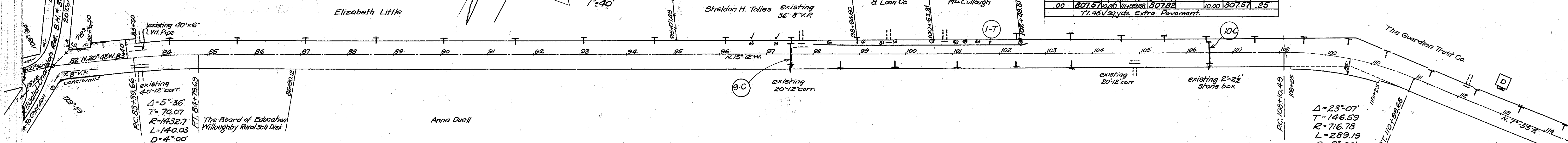
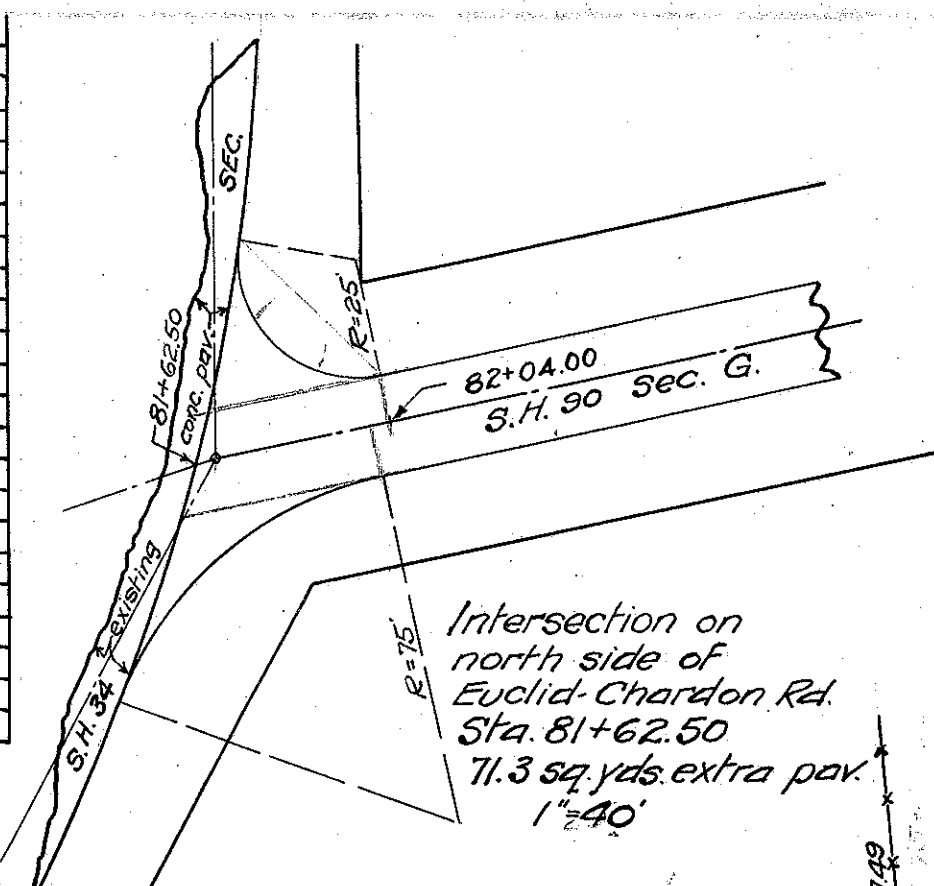
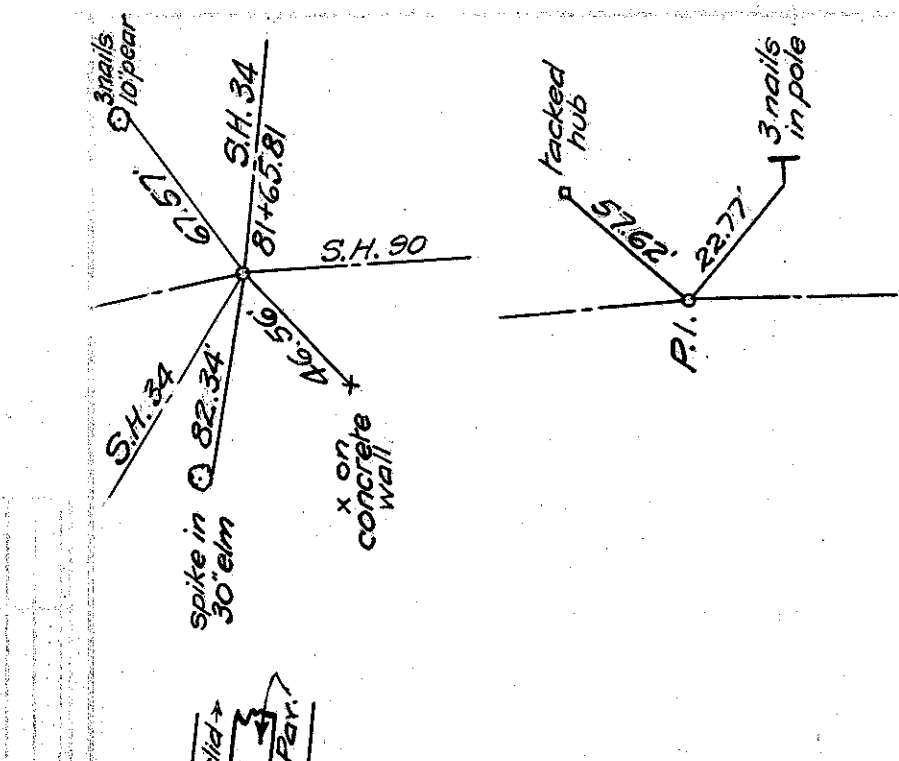


Sta. 82+39.66 to Sta. 85+79.69

LEFT	CENTER	RIGHT
Stn.	Stn.	Stn.
82.00	82.00	82.00
82.10	82.10	82.10
82.20	82.20	82.20
82.30	82.30	82.30
82.40	82.40	82.40
82.50	82.50	82.50
82.60	82.60	82.60
82.70	82.70	82.70
82.80	82.80	82.80
82.90	82.90	82.90
83.00	83.00	83.00
83.10	83.10	83.10
83.20	83.20	83.20
83.30	83.30	83.30
83.40	83.40	83.40
83.50	83.50	83.50
83.60	83.60	83.60
83.70	83.70	83.70
83.80	83.80	83.80
83.90	83.90	83.90
84.00	84.00	84.00
84.10	84.10	84.10
84.20	84.20	84.20
84.30	84.30	84.30
84.40	84.40	84.40
84.50	84.50	84.50
84.60	84.60	84.60
84.70	84.70	84.70
84.80	84.80	84.80
84.90	84.90	84.90
85.00	85.00	85.00
85.10	85.10	85.10
85.20	85.20	85.20
85.30	85.30	85.30
85.40	85.40	85.40
85.50	85.50	85.50
85.60	85.60	85.60
85.70	85.70	85.70
85.80	85.80	85.80
85.90	85.90	85.90
86.00	86.00	86.00

Sta. 107+10.49 to Sta. 111+99.68

LEFT	CENTER	RIGHT
Stn.	Stn.	Stn.
107.00	107.00	107.00
107.10	107.10	107.10
107.20	107.20	107.20
107.30	107.30	107.30
107.40	107.40	107.40
107.50	107.50	107.50
107.60	107.60	107.60
107.70	107.70	107.70
107.80	107.80	107.80
107.90	107.90	107.90
108.00	108.00	108.00
108.10	108.10	108.10
108.20	108.20	108.20
108.30	108.30	108.30
108.40	108.40	108.40
108.50	108.50	108.50
108.60	108.60	108.60
108.70	108.70	108.70
108.80	108.80	108.80
108.90	108.90	108.90
109.00	109.00	109.00
109.10	109.10	109.10
109.20	109.20	109.20
109.30	109.30	109.30
109.40	109.40	109.40
109.50	109.50	109.50
109.60	109.60	109.60
109.70	109.70	109.70
109.80	109.80	109.80
109.90	109.90	109.90
110.00	110.00	110.00
110.10	110.10	110.10
110.20	110.20	110.20
110.30	110.30	110.30
110.40	110.40	110.40
110.50	110.50	110.50
110.60	110.60	110.60
110.70	110.70	110.70
110.80	110.80	110.80
110.90	110.90	110.90
111.00	111.00	111.00
111.10	111.10	111.10
111.20	111.20	111.20
111.30	111.30	111.30
111.40	111.40	111.40
111.50	111.50	111.50
111.60	111.60	111.60
111.70	111.70	111.70
111.80	111.80	111.80
111.90	111.90	111.90
112.00	112.00	112.00



CULVERTS (C)

Item No.	Station	Type	Work Required	Detail sheet
9C	97+53	Std. cast iron	Remove existing 12"x20" corr. iron pipe + 12"x4" V.P. and build Std. 16"x44" cast iron pipe culvert. Hw. R+L, open outlet on R.	Sheet 49
10-C	106+50	Std. cast iron	Remove existing 2'x25'x25' stone box and build Std. 24"x44" cast iron pipe culvert with hw. on R+L, open outlet on L.	Sheet 49

DRIVES (D)

Sta.	Type	Size	Length	R or L	Remarks
83+52	Corr.	12"	20'	L	Remove 40' of 6" V.P.
83+52	Corr.	12"	40'	R	existing pipe is relaid
97+74	Corr.	12"	20'	L	Remove 36' of 8" V.P.
99+62	Corr.	6"	20'	L	Relaid from 114+97 on L.
100+73	Corr.	6"	20'	L	Relaid from 114+97 on L.
104+90	Corr.	12"	20'	R	existing pipe is relaid
112+11	Corr.	12"	20'	L	

ROADWAY DRAINAGE (T)

Item No.	Size	Type	From sta.	To sta.	R or L	Lin. Ft.
1-T	6"	vit.	98+00	102+60	20' L	460

B.M. #24 Sta. 81+60
Spike in root 24" elm
N.E. corner intersection.
Elev. = 814.98

B.M. #25 Sta. 85+63
Spike in tel. pole
21.5' to L of \pm .
Elev. = 828.99

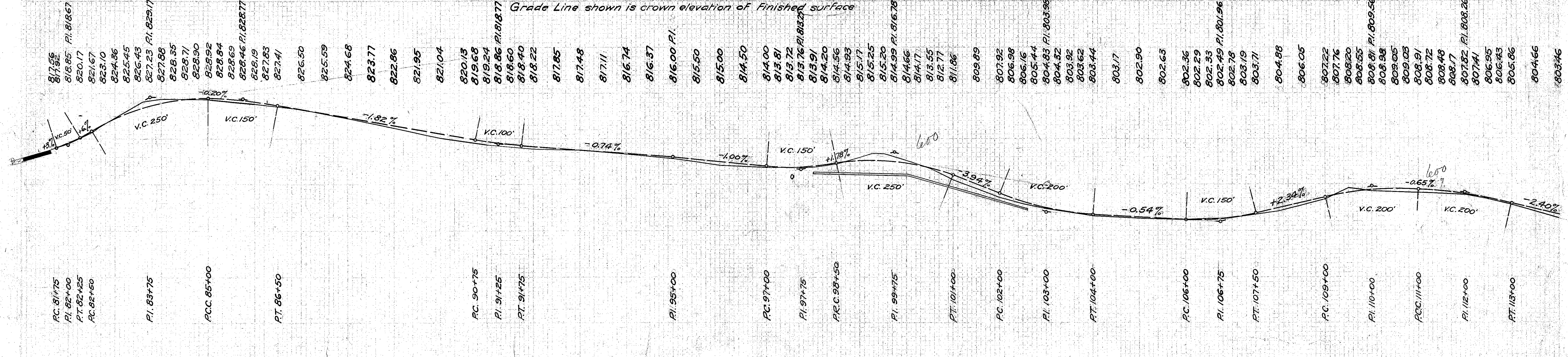
B.M. #26 Sta. 90+09
Spike in tel. pole
22' to L of \pm .
Elev. = 820.99

B.M. #27 Sta. 96+70
Spike in 15" apple
20' to L of \pm .
Elev. = 815.48

B.M. #28 Sta. 101+04
Spike in 12" maple
22' to L of \pm .
Elev. = 813.55

B.M. #29 Sta. 105+56
Spike in tel. pole
24' to L of \pm .
Elev. = 801.87

B.M. #30 Sta. 109+43
Spike in tel. pole
28' to L of \pm .
Elev. = 810.62



SURFACE ELEVATIONS

Station	Surface Elevation	Exc. Cu. Yds.	Emb. Cu. Yds.	Emb.+25% Waste
82	817.56			
83	818.9			
84	821.5			
85	824.5			
86	828.1			
87	828.8			
88	828.7			
89	827.7			
90	826.5			
91	824.5			
92	822.3			
93	820.1			
94	818.7			
95	817.8			
96	817.5			
97	816.6			
98	815.7			
99	814.1			
100	813.6			
101	813.7			
102	814.4			
103	815.9			
104	816.7			
105	815.1			
106	813.3			
107	810.9			
108	807.1			
109	805.8			
110	804.8			
111	803.1			
112	802.6			
113	802.2			
114	802.4			
115	802.6			
116	802.8			
117	803.1			
118	804.1			
119	806.3			
120	806.8			
121	809.1			
122	808.5			
123	808.1			
124	807.7			
125	806.8			
126	805.5			
127	802.6			