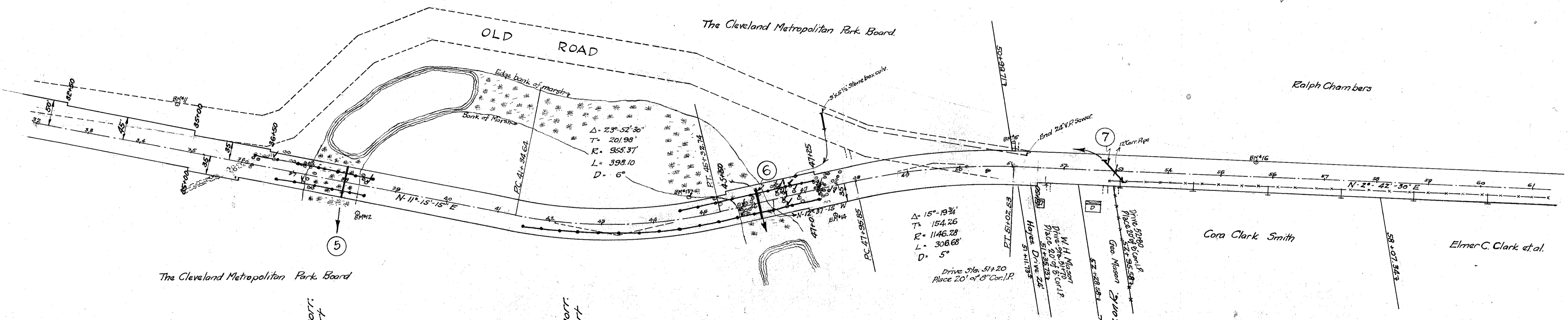
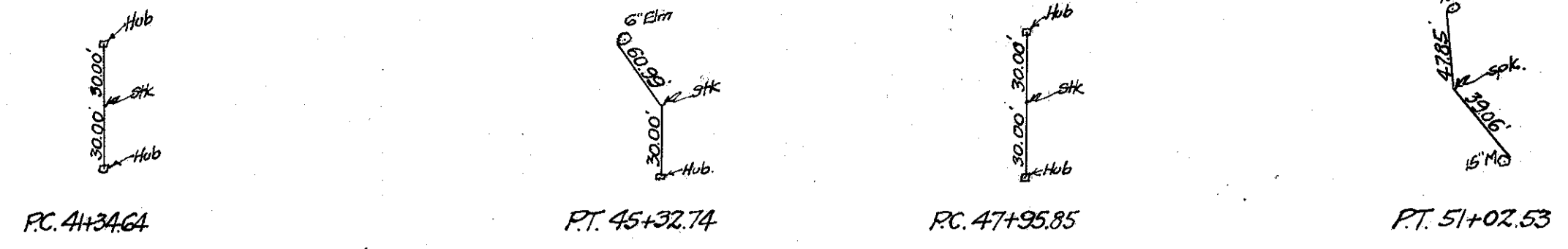
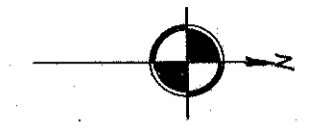


Type S-C Guard Rail
 Sta. 36+25 to 38+57 on left build 232'
 " 44+50 " 47+22 " " 272'
 " 36+70 " 38+46 " right " 176'
 " 41+50 " 47+34 " " 584'



BM #11 Sta. 34+54
 Spike front 12" Walnut
 85' L of \pm
 Elevation 681.89

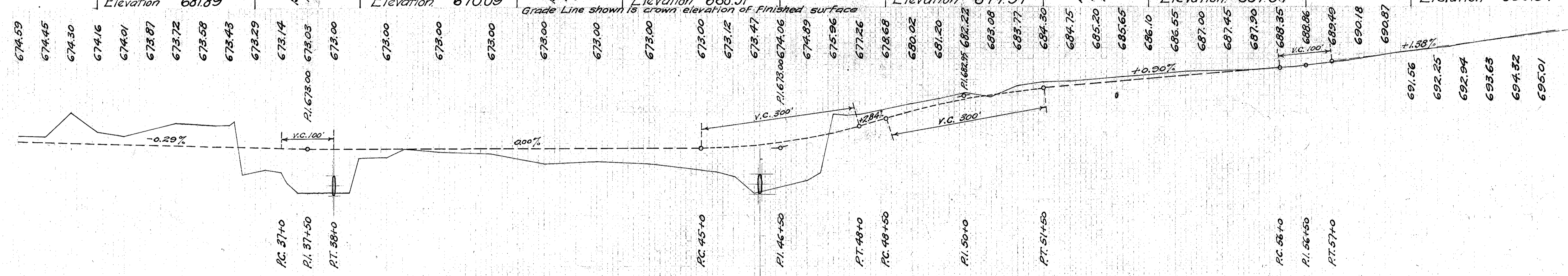
BM #12 Sta. 38+35
 Spike front 18" Walnut
 59' R of \pm
 Elevation 670.09

~~The Removed~~
 BM #13 Sta. 44+77
 Spike front 20" Ash
 43' L of \pm
 Elevation 668.31

Curve tables on sheet 5A
 BM #14 Sta. 47+47
 Spike front 40" Oak
 51' R of \pm
 Elevation 677.97

BM #15 Sta. 51+03
 Spike front 18" Elm
 47' L of \pm
 Elevation 687.37

BM #16 Sta. 55+70
 Spike front 14" Maple
 29' L of \pm
 Elevation 689.54



STATION	SURFACE ELEVATION	ELEVATIONS
32	675.7	675.7
33	675.5	675.5
34	680.1	680.1
35	676.4	676.4
36	675.6	675.6
37	678.1	678.1
38	671.6	671.6
39	672.2	672.2
40	673.4	673.4
41	672.0	672.0
42	670.0	670.0
43	670.5	670.5
44	670.0	670.0
45	668.8	668.8
46	667.6	667.6
47	666.8	666.8
48	668.4	668.4
49	668.3	668.3
50	668.6	668.6
51	668.8	668.8
52	668.9	668.9
53	668.6	668.6
54	668.7	668.7
55	668.5	668.5
56	668.8	668.8
57	668.7	668.7
58	668.4	668.4
59	669.7	669.7
60	669.1	669.1
61	669.2	669.2
62	669.9	669.9
63	669.3	669.3
64	669.4	669.4
65	669.5	669.5

Exc. 7734 Cu. Yds.
 Emb. +25% 7284 Cu. Yds.
 Waste 450 Cu. Yds.

Exc. 1815 Cu. Yds.
 Emb. +25% 2406 Cu. Yds.
 Bor. 594 Cu. Yds.

Exc. 1256.0 Cu. Yds.
 Emb. +25% 742 Cu. Yds.
 Waste 514 Cu. Yds.