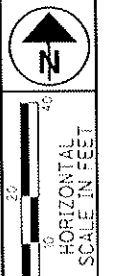


LAKE COUNTY
CONCORD TOWNSHIP
TWP 10, RANGE 8
LOT 11 TRACT 3



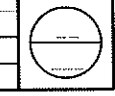
PID NO. 89046

P/W DESIGNER MPC
P/W REVIEWER SAL

RIGHT OF WAY DETAIL SHEET
STA. 199+50 TO STA. 205+00

LAK Auburn-Grile
Connector Road

7/18



BEGIN WORK
CAPITAL PARKWAY
STA 199+70.45

(PR1) L=75.00'
R=50.00'
C=68.16'
N40°57'34"E
IA=85°56'37"

(C2) L=104.63'
R=600.00'
C=104.50'
S88°58'21"W
IA=9°59'29"

EX. CL R/W STA. 3+21.44
EX. MON. BOX
W/ 5/8" REBAR FND
N 727927.60
E 2311469.88
CL CONSTRUCTION
CAPITAL PARKWAY
EXIST. CL R/W
CAPITAL PARKWAY

LAKE HOSPITAL SYSTEM INC.
08-A-020-A-00-008-0
6.970 AC. (REC)
6.9701 AC. (CALC)
2013R036552
GATEWAY BUSINESS

LAKOTA PROPERTY, LLC
7765 AUBURN ROAD
08-A-020-0-00-005-0
2.48 AC. (REC.)
2012R008612
GATEWAY BUSINESS

NORMANDY PROPERTIES LIMITED PARTNERSHIP
08-A-020-0-00-006-0
1169-0348
7.96 AC. (REC.)
8.0802 AC. (OBS.)
GATEWAY BUSINESS

NORMANDY PROPERTIES LIMITED PARTNERSHIP
08-A-020-0-00-006-0
1169-0348
7.96 AC. (REC.)
8.0802 AC. (OBS.)
GATEWAY BUSINESS

CONCORD REAL ESTATE INVESTMENTS, LLC.
QUAIL HIGHLANDS PHASE 1 SUBDIVISION
08-A-020-A-00-003-0
38.5480 AC. (REC)
38.5447 AC (OBS)
2005R051311
GATEWAY BUSINESS

EXISTING CENTERLINE RIGHT OF WAY
LINE AND CURVE DATA - CAPITAL PARKWAY

LINE TABLE		
LINE	LENGTH	BEARING
ER L1	221.44	S83°55'52"W

CURVE TABLE					
CURVE	LENGTH	RADIUS	CHORD		
			BEARING	DISTANCE	DELTA
ER C1	366.96	1450.00	S88°49'08"E	365.98	14°30'00"

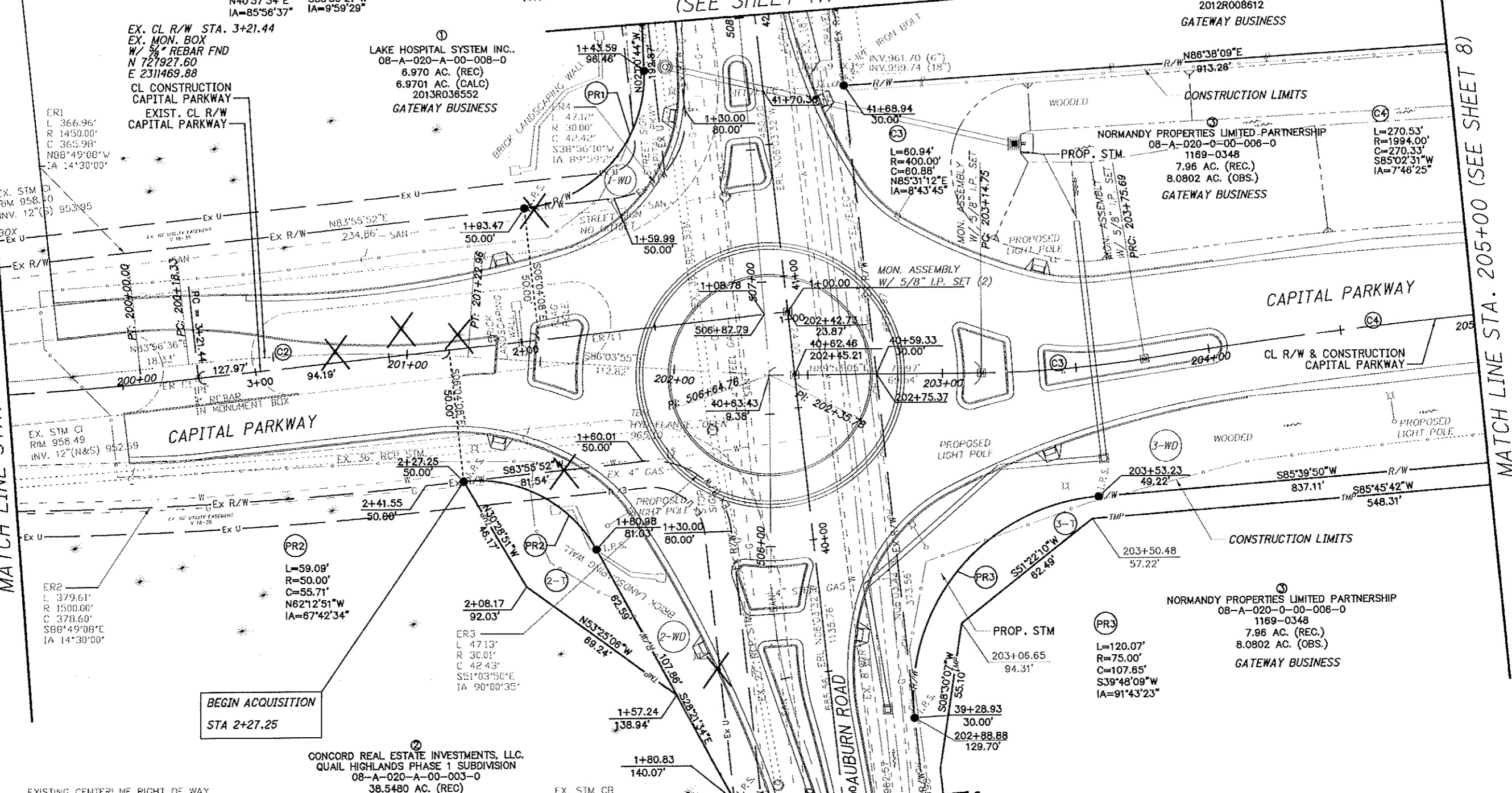
MATCH LINE STA. 42+00 AUBURN ROAD
(SEE SHEET 17)

MATCH LINE STA. 205+00 (SEE SHEET 8)

MATCH LINE STA. 39+00 AUBURN ROAD
(SEE SHEET 16)

MATCH LINE STA. 199+50 (SEE SHEET 6)

Z:\A\DOT CADD DWG\SLAK\1111\Yow\sheets\CAPITAL 199-50 - 205+00.dgn 7/30/2014 9:06:16 AM mcyvds



REV. BY	DATE	DESCRIPTION