

**LOT SPLIT OF LANDS OF
PENSKE TRUCK LEASING CO., L.P.
AND
RICHARD E. & DIANE M. LIDDY
TO BE CONSOLIDATED WITH LANDS OF
THE CITY OF WICKLIFFE**

AS SHADED HEREON AND BEING PARTS OF
THE VACATED STREETS IN
THE SHAKER VINEYARDS LAND COMPANY'S EUCLID AVENUE SUBDIVISION
RECORDED IN VOLUME 69, PAGE 2 OF LAKE COUNTY PLAT RECORDS
SITUATED IN THE CITY OF WICKLIFFE
LAKE COUNTY, OHIO

FEBRUARY 6, 2020

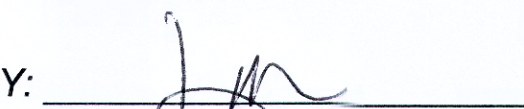
SCALE 1" = 60'

APPROVALS

APPROVED BY THE CITY OF WICKLIFFE ENGINEER THIS
24th DAY OF FEBRUARY, 2020.

BY: 
PETER J. FORMICA, P.E.
CITY ENGINEER

APPROVED BY THE MAYOR OF THE CITY OF WICKLIFFE
THIS 26th DAY OF FEBRUARY, 2020.

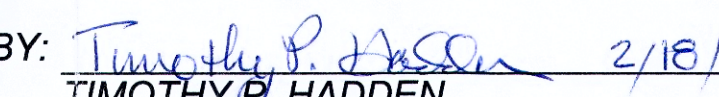
BY: 
JOHN V. BARBISH,
MAYOR

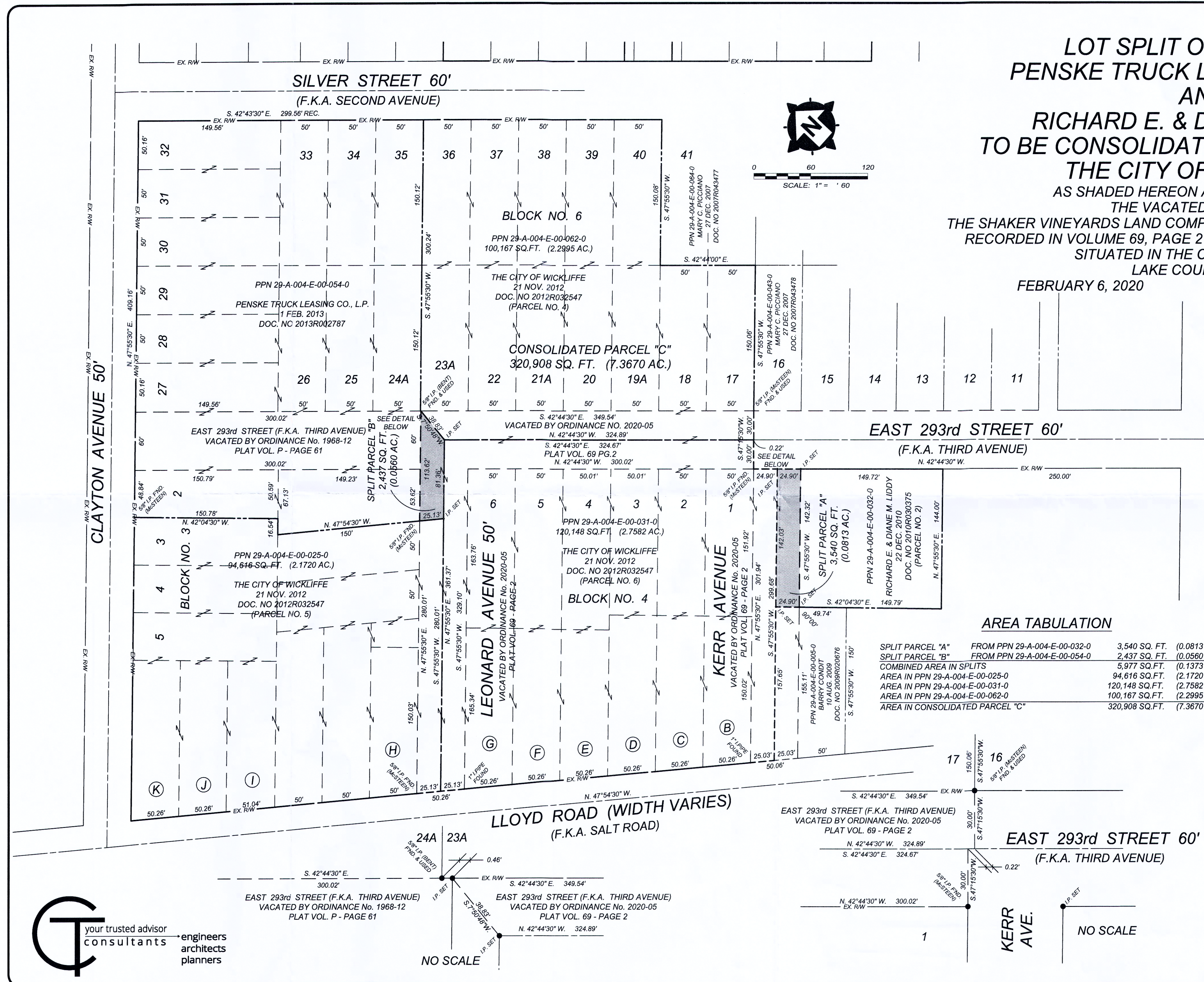
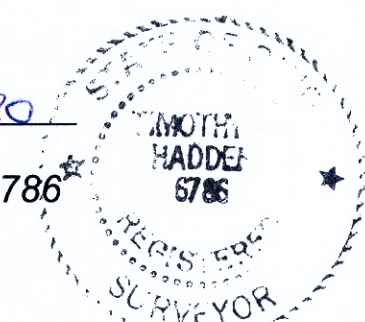
AREA TABULATION

SPLIT PARCEL "A"	FROM PPN 29-A-004-E-00-032-0	3,540 SQ. FT.	(0.0813 AC.)
SPLIT PARCEL "B"	FROM PPN 29-A-004-E-00-054-0	2,437 SQ. FT.	(0.0560 AC.)
COMBINED AREA IN SPLITS		5,977 SQ. FT.	(0.1373 AC.)
AREA IN PPN 29-A-004-E-00-025-0		94,616 SQ. FT.	(2.1720 AC.)
AREA IN PPN 29-A-004-E-00-031-0		120,148 SQ. FT.	(2.7582 AC.)
AREA IN PPN 29-A-004-E-00-062-0		100,167 SQ. FT.	(2.2995 AC.)
AREA IN CONSOLIDATED PARCEL "C"		320,908 SQ. FT.	(7.3670 AC.)

CERTIFICATION

THIS PLAT WAS PREPARED BY ME AND IS TRUE AND CORRECT TO THE BEST OF MY KNOWLEDGE AND BELIEF. DIMENSIONS SHOWN HEREON ARE EXPRESSED IN FEET AND DECIMAL PARTS THEREOF. BEARINGS SHOWN HEREON ARE BASED UPON THOSE FOUND ON PLAT RECORDED IN VOLUME 69, PAGE 2 OF LAKE COUNTY PLAT RECORDS. NO. 5 REINFORCING BARS 30" LONG AND CAPPED "CT CONSULTANTS INC." HAVE BEEN PLACED AT ALL POINTS MARKED "I.P. SET."

BY:  2/18/20
TIMOTHY P. HADDEN
OHIO REGISTERED SURVEYOR NO. 6786



H:\2019\19012\SURVEY\19012-SPLIT-DWG - SPLIT - 262203 12:08:15 PM - TM HADDEN