

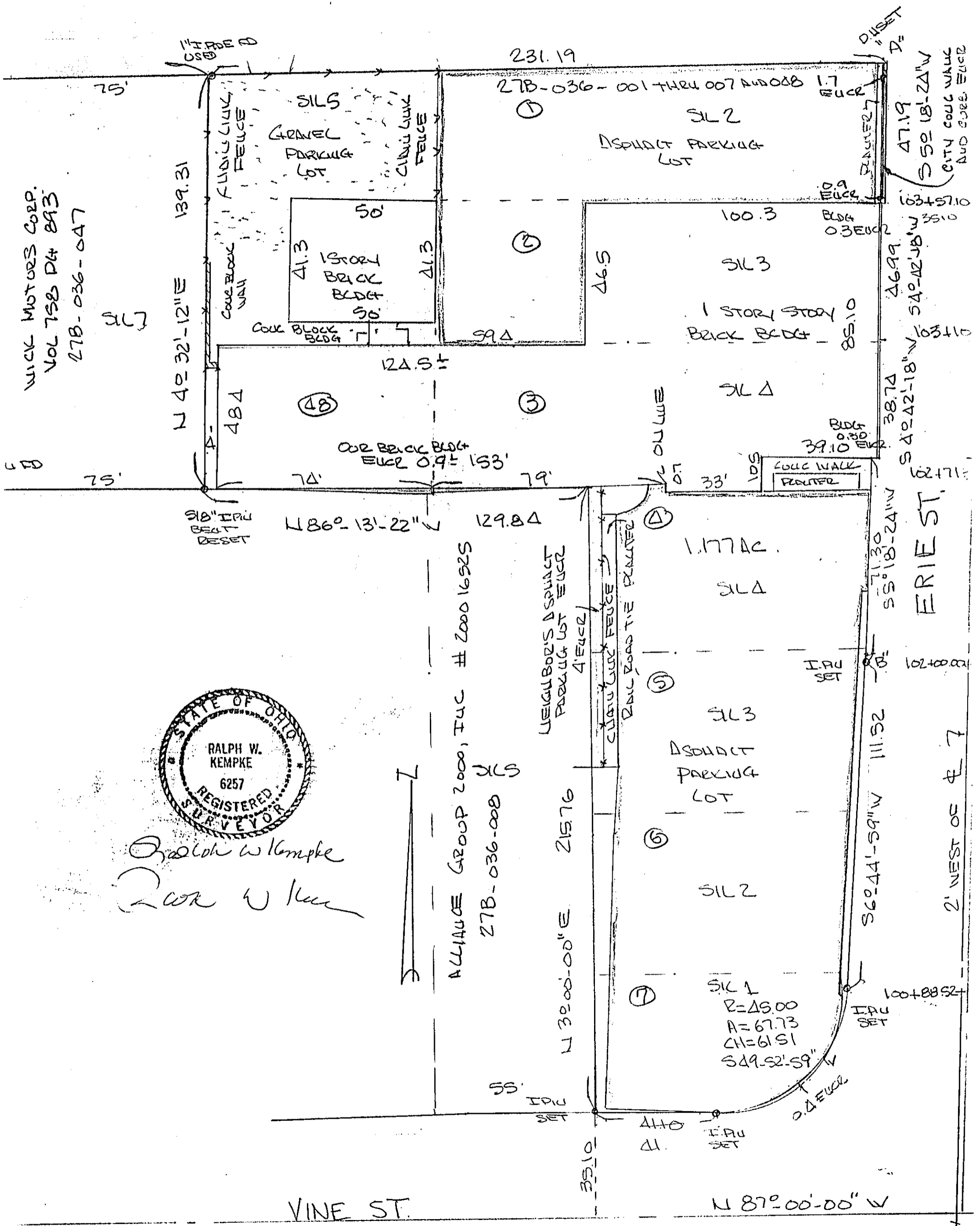
27B-36-1-7

T 60' 21" W

ELM ST

S 87° 07' 40" E

104135.3'



WICK MOTORS CORP.
VOL 758 P4 893
27B-036-047



Ralph W Kempke
Ralph W Kempke

ALLIANCE GROUP 2000, INC # 200016525
27B-036-008

WEIGLEBOD'S ASPHALT
PARKING LOT EASEL
4' EASEL

ERIE ST.

2' NEST OF E 7

N VARIES

1" PIV SET = 5/8" IRON PIV SET
WITH CAP 30" LONG

PROPERTY SURVEY
CHARLES M. A
PARCEL NO'S 27B-036
SCALE: 1" = 20' APPROVED BY