

NOTE: ALL IRON PINS SET ARE
5/8" X 30" AND CAPPED
BABCOCK, JONES & ASSOC.

ANNA PIZMOHT TRUSTEE
VOL. 1107 - PG. 204
25A-11-6

ROBERT & CLARICE SCHUPP
VOL. 105 - PG. 1246-1249
20A-12-10

TOTAL - 48.9678 ACRES
SPLIT "A" - 5.2436 ACRES
SPLIT "B" - 6.1405 ACRES
BALANCE - 37.5837 ACRES

RANDAL R. & MARIA ISABEL BOSS
DOC.# 2004R009995
20A-12-17

BEVERLY O'CONNELL
DOC.# 2004R009997
20A-12-8
SPLIT "B" - 6.1405 ACRES
R/W - 0.2790 ACRES
NET - 5.8615 ACRES

SPLIT "A" - 5.2436 ACRES
R/W - 0.2416 ACRES
NET - 5.0020 ACRES

STATE OF OHIO
VOL. 271 - PG. 250
20A-12-11

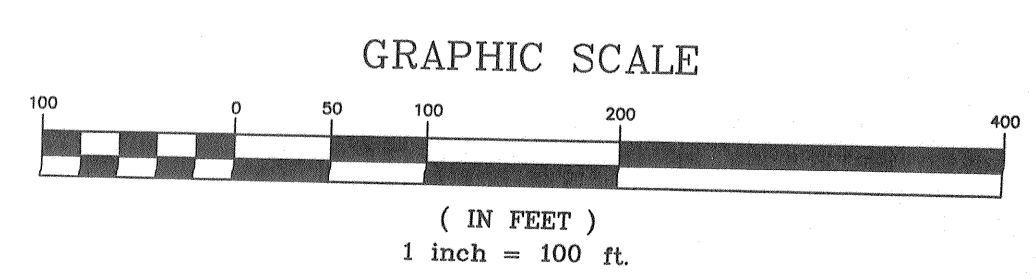
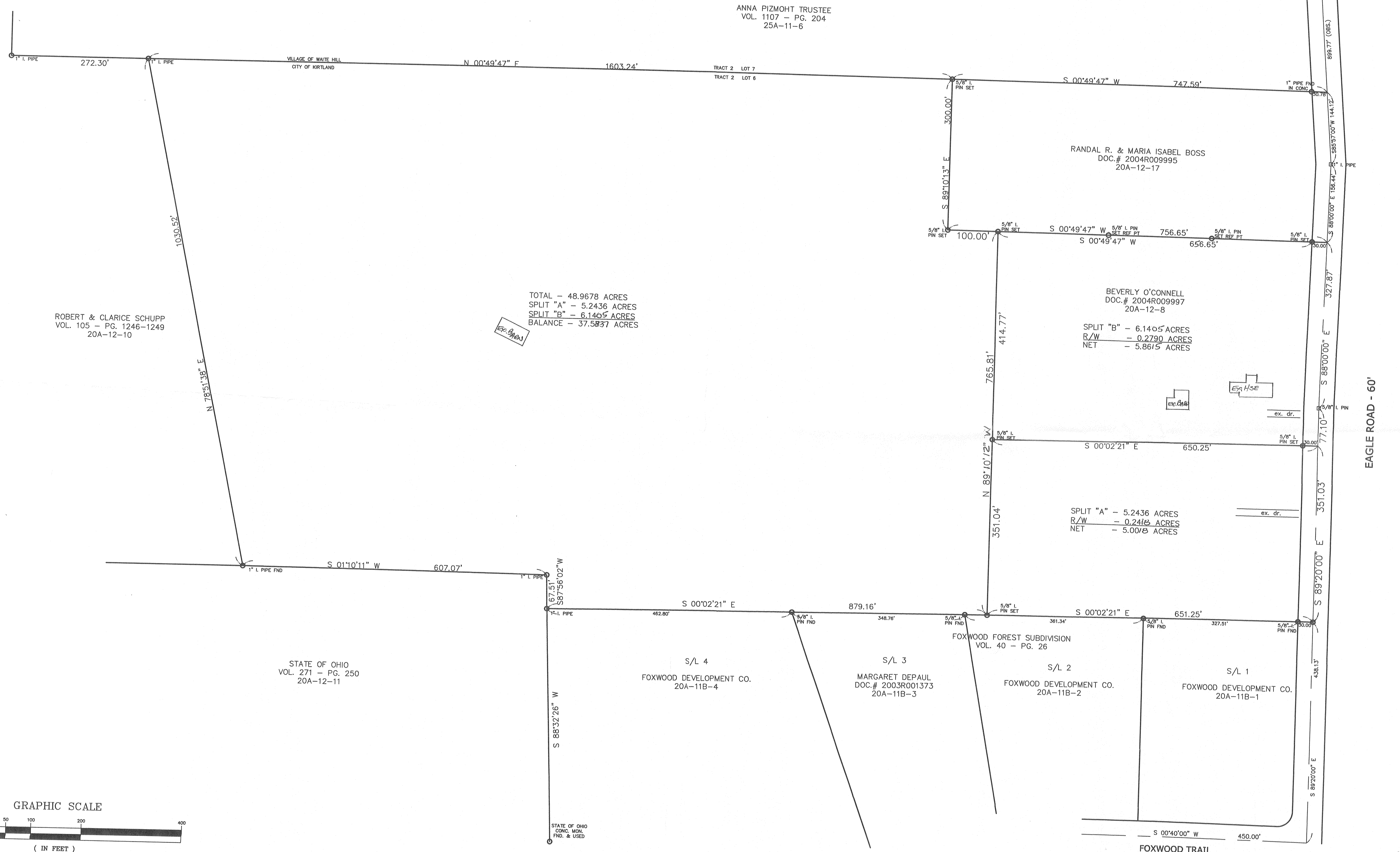
S/L 4
FOXWOOD DEVELOPMENT CO.
20A-11B-4

S/L 3
MARGARET DEPAUL
DOC.# 2003R001373
20A-11B-3

FOXWOOD FOREST SUBDIVISION
VOL. 40 - PG. 26

S/L 2
FOXWOOD DEVELOPMENT CO.
20A-11B-2

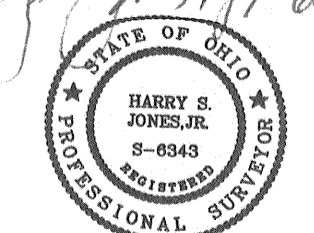
S/L 1
FOXWOOD DEVELOPMENT CO.
20A-11B-1



Bearings are based upon the centerline of Eagle Road being South 89°20'00" East and are used to describe angles only.

EXISTING UTILITIES NOTE:
THE SIZE AND LOCATION, BOTH HORIZONTAL AND VERTICAL OF THE UNDERGROUND UTILITIES SHOWN HEREON, HAVE BEEN OBTAINED BY A SEARCH OF AVAILABLE RECORDS. WHERE PRACTICAL, HOWEVER, BABCOCK, JONES AND ASSOCIATES INC. DOES NOT GUARANTEE THE COMPLETENESS NOR ACCURACY THEREOF.

12/14/04
Harry S. Jones, Jr. #6343



REV. NO.	DESCRIPTION	DATE	BY	CHK'D
1	Revised Bearings	12-17-04	HJ	HJ
2	Added Bindings	1-11-05	HJ	HJ

bj BABCOCK, JONES AND ASSOCIATES, INC
CIVIL ENGINEERS - SURVEYORS - LAND PLANNERS
PAINESVILLE OHIO 44077

DATE 1/15/04
DESIGN BY HJ
DRAWN BY NS
APPROVED BY HJ

PLAT OF SURVEY
FOR
BEVERLY O'CONNELL
TRACT 2 LOT 6 PARCEL NO. 20A-12-8 EAGLE ROAD
CITY OF KIRTLAND LAKE COUNTY STATE OF OHIO

SCALE 1"=100'
JOB NO. 97-015-SS
SHEET 1 OF 1