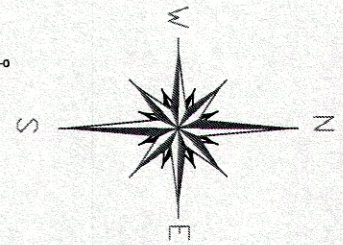
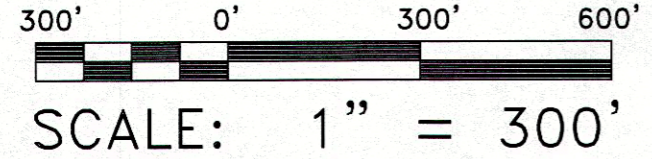
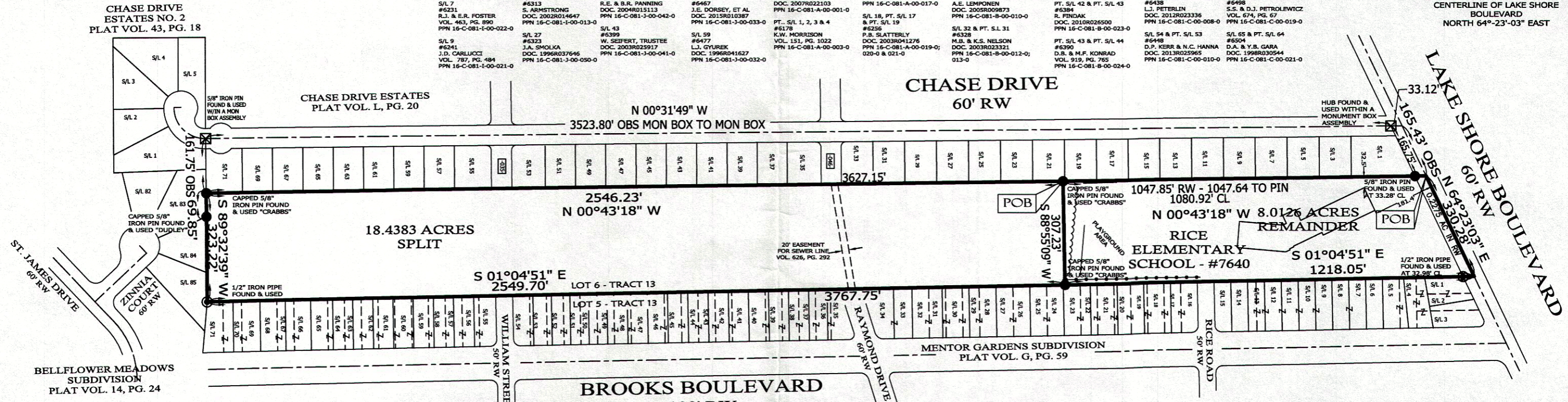


**LOT SPLIT OF LANDS**  
 ALL THAT CERTAIN LANDS SITUATE IN LOT 6,  
 TRACT 3, CITY OF MENTOR, TOWNSHIP NUMBER  
 10 NORTH, RANGE IX WEST, IN THE  
 CONNECTICUT WESTERN RESERVE SURVEY,  
 COUNTY OF LAKE, STATE OF OHIO. A LOT SPLIT  
 TAKEN FROM THE LANDS TO MENTOR BOARD OF  
 EDUCATION, AS RECORDED IN DOCUMENT  
 NUMBER DOC. 1997R021378 (PPN  
 16-C-081-0-00-004-0) IN THE OFFICE OF THE  
 COUNTY RECORDER.

- S/L 11 #6249 P.W. CANNATO DOC. 2012R019191 PPN 16-C-081-1-00-020-0
- S/L 13 #6257 S.M. & J.D. AKER DOC. 1999R001116 PPN 16-C-081-1-00-019-0
- S/L 15 #6265 T.J. & A.F. LIMOLI DOC. 2013R001733 PPN 16-C-081-1-00-018-0
- S/L 17 #6275 G.G. & D.M. DRAKE VOL. 1180, PG. 300 PPN 16-C-081-1-00-017-0
- S/L 19 #6285 J.A. ALGERI DOC. 2014R027564 PPN 16-C-081-1-00-016-0
- S/L 21 #6293 R.G. & K.L. TRYNOVICH VOL. 95, PG. 1188 PPN 16-C-081-1-00-015-0
- S/L 23 #6303 S.L. & V.M. ZIEGLER DOC. 2002R022500 PPN 16-C-081-1-00-014-0
- S/L 25 #6313 S. ARMSTRONG DOC. 2002R014647 PPN 16-C-081-1-00-013-0
- S/L 27 #6323 W. SEIFERT, TRUSTEE J.A. SMOLKA DOC. 1996R037646 PPN 16-C-081-1-00-012-0
- S/L 29 #6331 B.M. POPIK DOC. 2005R002870 PPN 16-C-081-1-00-040-0
- S/L 31 #6341 R.A. & L. SCHIRMIRE DOC. 2005R021317 PPN 16-C-081-1-00-048-0
- S/L 33 #6347 J.W. & L.M. McDONALD DOC. 1999R00255 PPN 16-C-081-1-00-047-0
- S/L 35 #6353 CITY OF MENTOR VOL. 781, PG. 602 PPN 16-C-081-1-00-046-0
- S/L 37 #6363 S.R. SLAMINKA S.R. SLAMINKA DOC. 2014R026588 PPN 16-C-081-1-00-045-0
- S/L 39 #6381 A. & P. DAUENHAUER VOL. 226, PG. 226 PPN 16-C-081-1-00-044-0
- S/L 41 #6391 R.E. & B.R. PANNING DOC. 2004R015113 PPN 16-C-081-1-00-042-0
- S/L 43 #6399 W. SEIFERT, TRUSTEE J.A. SMOLKA DOC. 2003R025917 PPN 16-C-081-1-00-041-0
- S/L 45 #6407 WAYSIDE HOUSING CORP INC DOC. 2015R013903 PPN 16-C-081-1-00-040-0
- S/L 47 #6415 B.A. PRESLER DOC. 2008R007829 PPN 16-C-081-1-00-039-0
- S/L 49 #6425 P.R. & C.L. JOHNSON DOC. 2007R043082 PPN 16-C-081-1-00-038-0
- S/L 51 #6435 P.A. WALTON DOC. 2004R024324 PPN 16-C-081-1-00-037-0
- S/L 53 #6443 D. TROPP & R.L. NARO DOC. 2015R024467 PPN 16-C-081-1-00-036-0
- S/L 55 #6457 MENTOR GARDENS SUBDIVISION PLAT VOL. G, PG. 59 DOC. 2014R022352 PPN 16-C-081-1-00-035-0
- S/L 57 #6467 CITY OF MENTOR VOL. 781, PG. 602 PPN 16-C-081-1-00-035-0
- S/L 59 #6477 L.J. SYUREK DOC. 1996R041627 PPN 16-C-081-1-00-032-0
- S/L 61 #6485 C.A. & A.E. HARRIS VOL. 725, PG. 1026 DOC. 2015R013903 PPN 16-C-081-1-00-031-0
- S/L 63 #6493 R.M. & C.R. ZELLER VOL. 1019, PG. 1140 PPN 16-C-081-1-00-030-0
- S/L 65 #6505 K.E. & P.T. ALDRICH DOC. 2011R013396 PPN 16-C-081-1-00-029-0
- S/L 67 #6515 T.A. & S.A. GRIFFITH VOL. 486, PG. 29 PPN 16-C-081-1-00-028-0
- S/L 69 #6523 J.G. & C.A. BEKWITH DOC. 2000R043396 PPN 16-C-081-1-00-027-0
- S/L 71 #6531 C.C. & K.M. CHRISTOPHER DOC. 1996R026835 PPN 16-C-081-1-00-026-0
- S/L 73 #6547 MENTOR GARDENS SUBDIVISION PLAT VOL. G, PG. 59 DOC. 2014R022352 PPN 16-C-081-1-00-026-0
- S/L 75 #6557 J. & D. GERAR DOC. 2007R022103 PPN 16-C-081-1-00-021-0
- S/L 77 #6567 J.E. DORSEY, ET AL DOC. 2015R010387 PPN 16-C-081-1-00-023-0
- S/L 79 #6577 K.W. MORRISON VOL. 151, PG. 1022 PPN 16-C-081-1-00-003-0
- S/L 81 #6585 S. ROCKWELL DOC. 2011R005513 PPN 16-C-081-1-00-005-0
- S/L 83 #6593 E. LAMPERTY DOC. 1997R027758 PPN 16-C-081-1-00-024-0; 002-0
- S/L 85 #6599 B. & J. MILISIC DOC. 2006R000495 PPN 16-C-081-1-00-007-0; 008-0
- S/L 87 #6613 L.J. BOYCE DOC. 2008R046391 PPN 16-C-081-1-00-009-0; 010-0
- S/L 89 #6623 G.L. & L.A. WEBB VOL. 331, PG. 1314 PPN 16-C-081-1-00-011-0; 012-0; 013-0 & 014-0
- S/L 91 #6631 T. & S. HARRIS DOC. 2008R000489 PPN 16-C-081-1-00-021-0
- S/L 93 #6639 K.R. & J.K. DUNCAN VOL. 538, PG. 507 PPN 16-C-081-1-00-009-0
- S/L 95 #6647 A.E. LEMPONEN DOC. 2005R009873 PPN 16-C-081-1-00-010-0
- S/L 97 #6655 P.B. SLATTERLY DOC. 2003R041276 PPN 16-C-081-1-00-012-0; 020-0 & 021-0
- S/L 99 #6663 R. & B.A. COSTA VOL. 268, PG. 1045 PPN 16-C-081-1-00-022-0; 023-0
- S/L 101 #6671 E. LAMPERTY DOC. 1997R027758 PPN 16-C-081-1-00-024-0; 002-0
- S/L 103 #6679 R.J. & B.A. HEETER VOL. 398, PG. 124 PPN 16-C-081-1-00-004-0
- S/L 105 #6687 C.E. & A.S. SUSTARIC DOC. 2005R014889 PPN 16-C-081-1-00-005-0; 006-0
- S/L 107 #6695 S/L 26 & 27 #6298 R. & A. HODGE DOC. 2008R003845 PPN 16-C-081-1-00-007-0; 008-0
- S/L 109 #6703 K. KAUFMAN SPROCK DOC. 1996R010303 PPN 16-C-081-1-00-017-0
- S/L 111 #6711 S/L 32 & PT. S.L. 31 #6328 M.B. & K.S. NELSON DOC. 2003R041276 PPN 16-C-081-1-00-019-0; 020-0 & 021-0
- S/L 113 #6719 J.L. BOYCE DOC. 2010R025140 PPN 16-C-081-1-00-019-0
- S/L 115 #6727 T.M. LONG DOC. 2010R025140 PPN 16-C-081-1-00-019-0
- S/L 117 #6735 W.J. MCMAHON ESTATE PRO LLC DOC. 2010R006308 PPN 16-C-081-1-00-020-0
- S/L 119 #6743 B.J. DELUCA DOC. 2003R039716 PPN 16-C-081-1-00-007-0
- S/L 121 #6751 R. FINDAK DOC. 2010R026500 PPN 16-C-081-1-00-023-0
- S/L 123 #6759 D.B. & M.F. KONRAD VOL. 919, PG. 765 PPN 16-C-081-1-00-024-0
- S/L 125 #6767 J.M. & W.P. JR PENNY DOC. 2005R031340 PPN 16-C-081-1-00-001-0
- S/L 127 #6775 C.L. VOKAC DOC. 2015R006060 PPN 16-C-081-1-00-002-0
- S/L 129 #6783 R.E. & P.R. MAUZU VOL. 130, PG. 230 PPN 16-C-081-1-00-016-0
- S/L 131 #6791 J.L. & M.S. SANDERS DOC. 2003R042309 PPN 16-C-081-1-00-017-0
- S/L 133 #6799 H.M. PETERSBURG DOC. 2006R026207 PPN 16-C-081-1-00-004-0
- S/L 135 #6807 M.P. & C.A. MORAN VOL. 884, PG. 134 PPN 16-C-081-1-00-006-0
- S/L 137 #6815 J.A. NEMETH, TRUSTEE DOC. 2014R07496 PPN 16-C-081-1-00-017-0
- S/L 139 #6823 M. & D.J. KLOCK VOL. 788, PG. 595 PPN 16-C-081-1-00-005-0
- S/L 141 #6831 S.S. & D.J. PETROLEWICZ VOL. 674, PG. 67 PPN 16-C-081-1-00-019-0
- S/L 143 #6839 D.P. KERR & N.C. HANNA DOC. 2013R025965 PPN 16-C-081-1-00-010-0
- S/L 145 #6847 P.T. S/L 44 & PT. S/L 45 #6398 M.E. CREWS DOC. 2015R006060 PPN 16-C-081-1-00-002-0
- S/L 147 #6855 R.J. CUVA DOC. 2004R053471 PPN 16-C-081-1-00-003-0
- S/L 149 #6863 R.P. BLUM DOC. 2008R026587 PPN 16-C-081-1-00-015-0
- S/L 151 #6871 S/L 50 & PT. S/L 50 #6420 W.J. MCMAHON ESTATE PRO LLC DOC. 2010R006308 PPN 16-C-081-1-00-006-0
- S/L 153 #6879 P.T. S/L 51 & PT. S/L 51 #6424 B.J. DELUCA DOC. 2003R039716 PPN 16-C-081-1-00-007-0
- S/L 155 #6887 D.F. ROSE DOC. 1999R043320 PPN 16-C-081-1-00-005-0
- S/L 157 #6895 P.T. S/L 52 & PT. S/L 53 #6438 L.J. PETERLIN DOC. 2012R023336 PPN 16-C-081-1-00-008-0
- S/L 159 #6903 S/L 54 & PT. S/L 53 #6448 D.P. KERR & N.C. HANNA DOC. 2013R025965 PPN 16-C-081-1-00-010-0
- S/L 161 #6911 S/L 55 & PT. S/L 56 #6452 C.E. & E.A. YONACOS VOL. 45, PG. 657 PPN 16-C-081-1-00-011-0
- S/L 163 #6919 P.T. S/L 56 & PT. S/L 57 #6458 M.E. CREWS DOC. 2015R006060 PPN 16-C-081-1-00-002-0
- S/L 165 #6927 P.T. S/L 57 & PT. S/L 58 #6468 M.J. JR & N. KATIC DOC. 2007R030535 PPN 16-C-081-1-00-013-0
- S/L 167 #6935 H.M. PETERSBURG DOC. 2008R026587 PPN 16-C-081-1-00-015-0
- S/L 169 #6943 P.T. S/L 58 & PT. S/L 59 #6472 R.P. BLUM DOC. 2008R026587 PPN 16-C-081-1-00-015-0
- S/L 171 #6951 P.T. S/L 71 & PT. S/L 70 #6532 D.W. & E.S. SMITH VOL. 806, PAGE 48 PPN 16-C-081-1-00-027-0
- S/L 173 #6959 S/L 68 & PT. S/L 67 #6512 N.J. TANKOVICH DOC. 2012R03000 PPN 16-C-081-1-00-024-0
- S/L 175 #6967 S/L 69 & PT. S/L 70 #6522 L.J. TUCC HELLERMAN & L.A. HELLERMAN DOC. 1997R044691 PPN 16-C-081-1-00-025-0
- S/L 177 #6975 S/L 71 & PT. S/L 70 #6532 D.W. & E.S. SMITH VOL. 806, PAGE 48 PPN 16-C-081-1-00-027-0



BASIS OF BEARINGS ARE TO AN ASSUMED MERIDIAN ALONG THE CENTERLINE OF LAKE SHORE BOULEVARD NORTH 64°-23'-03" EAST



**SURVEY: DECEMBER 15, 2015**  
**MAP: JANUARY 4, 2016**

- LEGEND**
- IRON PIN FOUND/SET
  - ⊙ IRON PIPE
  - STONE MONUMENT
  - ⊠ MONUMENT BOX
  - ⊕ P.K. NAIL FOUND/SET
  - DRILL HOLE FOUND
  - CALC CALCULATED
  - MEAS MEASURED
  - OBS OBSERVED
  - DEED DEED RECITED
  - PLAT PLAT RECITED

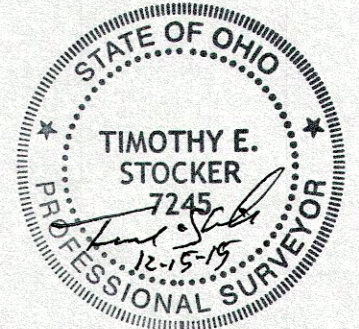
**NOTES & REFERENCES**

- DEEDS OF RECORD
- OCCUPATION AGREES WITH TITLE LINES AS PREVIOUSLY MONUMENTED EXCEPT AS SHOWN ON THIS PLAT

**NOTE:**  
 VIOLATIONS EXIST ALONG EAST AND WEST PROPERTY LINES. FENCES AND SHEDS ARE OVER THE LINE AT VARIOUS INTERVALS. AMOUNTS NOT NOTED.

PREPARED FOR:  MENTOR BOARD OF EDUCATION	PROJECT NAME:  LOT SPLIT OF LANDS	PROJECT ADDRESS: 7640 LAKE SHORE BLVD MENTOR, OHIO
	PROJECT LOCATION:  LAKE COUNTY, OHIO	JOB NUMBER:  6366
FOR INQUIRIES CONCERNING THIS SURVEY CONTACT:  <b>CSS</b> CRABBS' SURVEYING SERVICE P.O. BOX 908 PAINESVILLE, OHIO 44077 1-800-488-3968		CHK: T. STOCKER  DRN: S. HUPERTZ REV:  PAGE 1 OF 1

THIS SURVEY WAS PERFORMED TO AN ACCURACY AS SET FORTH IN THE 2003 OHIO ADMINISTRATIVE CODE 4733-37.



TIMOTHY E. STOCKER, P.S. 7245