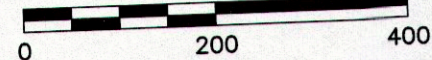


NORTH

SCALE IN FEET



P:\2014\141-331-1-Survey\Map\141-331-SV04-Consolidation Plat 38.5614 Acre Tract.dwg[CONSOLIDATION PLAT] LS:02/04/2015 - dmyd - LP: 5/4/2015 10:19 AM

DIRECTION TO WITNESS MONUMENTS
(SET 5/8" IRON PINS WITH CAPS
STAMPED "CIVIL AND ENVIRONMENTAL")

A	N 44°49'36" W	5.00'
B	S 89°21'09" W	5.00'
C	S 76°57'55" E	5.00'
D	N 80°26'29" W	5.00'
E	N 82°50'57" W	5.00'
F	N 40°12'59" W	5.00'
G	N 08°50'58" W	5.00'
H	N 81°44'07" W	5.00'
I	N 86°56'10" W	5.00'
J	N 63°27'17" W	5.00'
K	S 00°11'44" W	5.00'
L	S 58°08'42" W	5.00'
M	N 45°09'36" W	5.00'
N	S 89°59'19" W	5.00'
O	N 59°45'09" W	5.00'
P	N 19°16'46" W	5.00'
Q	N 00°12'07" E	5.00'
R	N 47°42'27" E	5.00'
S	N 28°40'30" E	5.00'
T	N 58°35'35" E	5.00'
U	N 01°27'01" E	5.00'
V	N 01°27'06" E	5.00'

LEGEND

- FOUND 5/8" IRON PIN
- SET 5/8" IRON PIN WITH CAP STAMPED "CIVIL AND ENVIRONMENTAL"
- EXISTING MONUMENT BOX

PERTINENT DOCUMENTS AND SOURCES OF DATA USED:

SURVEYS:
 16-B-065-0-00-034
 16-B-065-0-00-034_A
 16-B-065-0-00-037
 16-B-065-0-00-037_B
 16-B-065-0-00-042
 36-B
 45-31
 53-1
 Z-26
 RAILROAD VALUATION MAP
 DEEDS: AS SHOWN

SURVEYORS NOTES:

BASIS OF BEARINGS IS CENTERLINE OF DIAMOND CENTRE DRIVE AS RECORDED IN SURVEY VOLUME 36, PAGE 8 S 89°56'55" E.

ALL MONUMENTS FOUND ARE IN GOOD CONDITIONS UNLESS OTHERWISE NOTED.

THE OCCUPATION, WHERE EXISTING, IN GENERAL FITS THE SURVEY BOUNDARY LINE.

NEW BOUNDARY LINES GENERALLY FOLLOW AN EXISTING WOVEN WIRE FENCE AROUND A CONSERVATION EASEMENT AS DESCRIBED BY DOCUMENT NO. 2013R028064.

COORDINATES SHOWN IN THE CLOSURE SUMMARY ARE FOR CLOSURE CALCULATIONS ONLY. THEY DO NOT REPRESENT STATE PLANE COORDINATES FOR THE BOUNDARY COORDINATES.

I HEREBY CERTIFY THAT TO THE BEST OF MY PROFESSIONAL KNOWLEDGE, INFORMATION, AND BELIEF, THIS PLAT OF SURVEY IS A CORRECT REPRESENTATION OF AN ACTUAL FIELD SURVEY PERFORMED UNDER MY DIRECT SUPERVISION. I FURTHER CERTIFY THAT ALL MONUMENTS NOTED HEREON HAVE BEEN FOUND OR SET AS INDICATED.

Jeffrey A. Miller 5-4-15
 JEFFREY A. MILLER
 OHIO REGISTERED SURVEYOR No 7211
 DATE



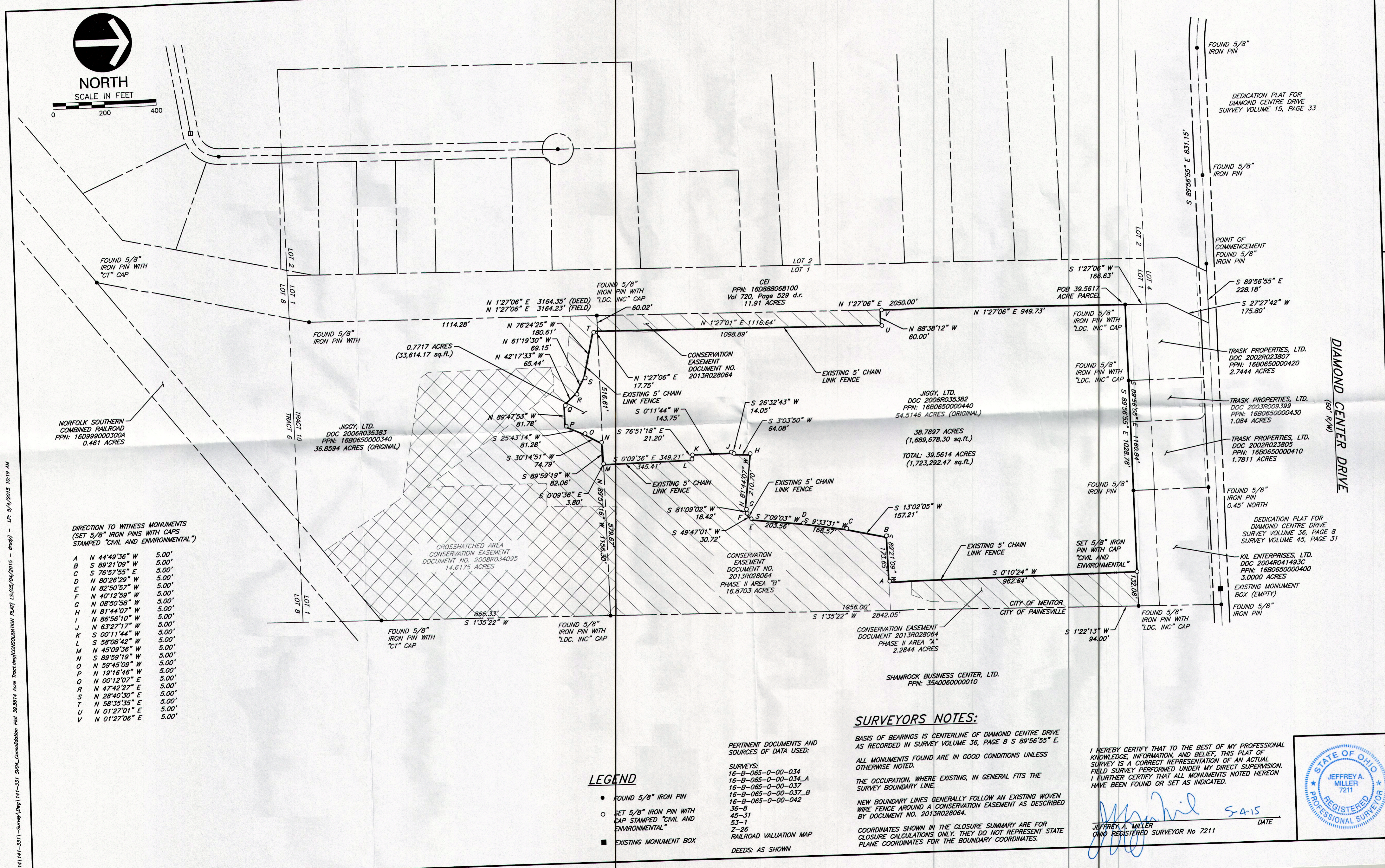
DRAWING NO.: **SV04**
 SHEET 1 OF 1

CITY OF MENTOR
 LAKE COUNTY, OHIO
 PART OF ORIGINAL MENTOR TOWNSHIP
 LOT 1, TRACT 10, LOT 8, TRACT 6

DATE: APRIL 9, 2015 DRAWN BY: MJW
 DWG SCALE: 1" = 200' CHECKED BY: ABS
 PROJECT NO: 140-539
 APPROVED BY: MJW

CONSOLIDATION PLAT - JIGGY LTD.
 PPN: 16B0650000440, 16B0650000340
 TOWNSHIP 10 NORTH, RANGE 9 WEST
 OF CONNECTICUT WESTERN RESERVE

Civil & Environmental Consultants, Inc.
 5899 Montclair Blvd. - Cincinnati, OH 45150
 513-985-0226 - 800-759-5614
 www.cecinc.com



DIAMOND CENTRE DRIVE
(60' R/W)

CITY OF MENTOR
CITY OF PAINESVILLE

SHAMROCK BUSINESS CENTER, LTD.
PPN: 35A0060000010

CONSERVATION EASEMENT
DOCUMENT 2013R028064
PHASE II AREA "A"
2,284 ACRES

CONSERVATION EASEMENT
DOCUMENT NO. 2013R028064
PHASE II AREA "B"
16.8703 ACRES

CROSSHATCHED AREA
CONSERVATION EASEMENT
DOCUMENT NO. 2008R034095
14.6175 ACRES

JIGGY, LTD.
DOC 2006R035383
PPN: 16B0650000340
36.8594 ACRES (ORIGINAL)

JIGGY, LTD.
DOC 2006R035382
PPN: 16B0650000440
54.5146 ACRES (ORIGINAL)
38.7897 ACRES
(1,689,678.30 sq.ft.)
TOTAL: 39.5614 ACRES
(1,723,292.47 sq.ft.)

TRASK PROPERTIES, LTD.
DOC 2002R023807
PPN: 16B0650000420
2.7444 ACRES

TRASK PROPERTIES, LTD.
DOC 2003R009399
PPN: 16B0650000430
1.084 ACRES

TRASK PROPERTIES, LTD.
DOC 2002R023805
PPN: 16B0650000410
1.7811 ACRES

DEDICATION PLAT FOR
DIAMOND CENTRE DRIVE
SURVEY VOLUME 45, PAGE 8

KIL ENTERPRISES, LTD.
DOC 2004R041493C
PPN: 16B0650000400
3.0000 ACRES

EXISTING MONUMENT
BOX (EMPTY)

FOUND 5/8" IRON PIN

FOUND 5/8" IRON PIN WITH "LDC. INC" CAP

FOUND 5/8" IRON PIN WITH "LDC. INC" CAP

FOUND 5/8" IRON PIN WITH "LDC. INC" CAP

FOUND 5/8" IRON PIN WITH "LDC. INC" CAP

FOUND 5/8" IRON PIN WITH "LDC. INC" CAP

FOUND 5/8" IRON PIN WITH "LDC. INC" CAP

FOUND 5/8" IRON PIN WITH "LDC. INC" CAP

FOUND 5/8" IRON PIN WITH "LDC. INC" CAP

FOUND 5/8" IRON PIN WITH "LDC. INC" CAP

FOUND 5/8" IRON PIN WITH "LDC. INC" CAP

FOUND 5/8" IRON PIN WITH "LDC. INC" CAP

FOUND 5/8" IRON PIN WITH "LDC. INC" CAP

FOUND 5/8" IRON PIN WITH "LDC. INC" CAP

FOUND 5/8" IRON PIN WITH "LDC. INC" CAP

FOUND 5/8" IRON PIN WITH "LDC. INC" CAP

FOUND 5/8" IRON PIN WITH "LDC. INC" CAP

FOUND 5/8" IRON PIN WITH "LDC. INC" CAP

FOUND 5/8" IRON PIN WITH "LDC. INC" CAP

FOUND 5/8" IRON PIN WITH "LDC. INC" CAP

FOUND 5/8" IRON PIN WITH "LDC. INC" CAP

FOUND 5/8" IRON PIN WITH "LDC. INC" CAP

FOUND 5/8" IRON PIN WITH "LDC. INC" CAP

FOUND 5/8" IRON PIN WITH "LDC. INC" CAP

FOUND 5/8" IRON PIN WITH "LDC. INC" CAP

FOUND 5/8" IRON PIN WITH "LDC. INC" CAP

FOUND 5/8" IRON PIN WITH "LDC. INC" CAP

FOUND 5/8" IRON PIN WITH "LDC. INC" CAP

FOUND 5/8" IRON PIN WITH "LDC. INC" CAP

FOUND 5/8" IRON PIN WITH "LDC. INC" CAP

FOUND 5/8" IRON PIN WITH "LDC. INC" CAP

FOUND 5/8" IRON PIN WITH "LDC. INC" CAP