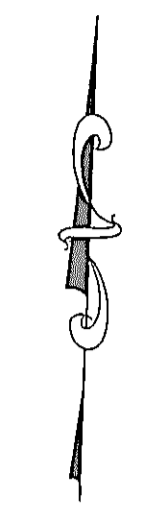


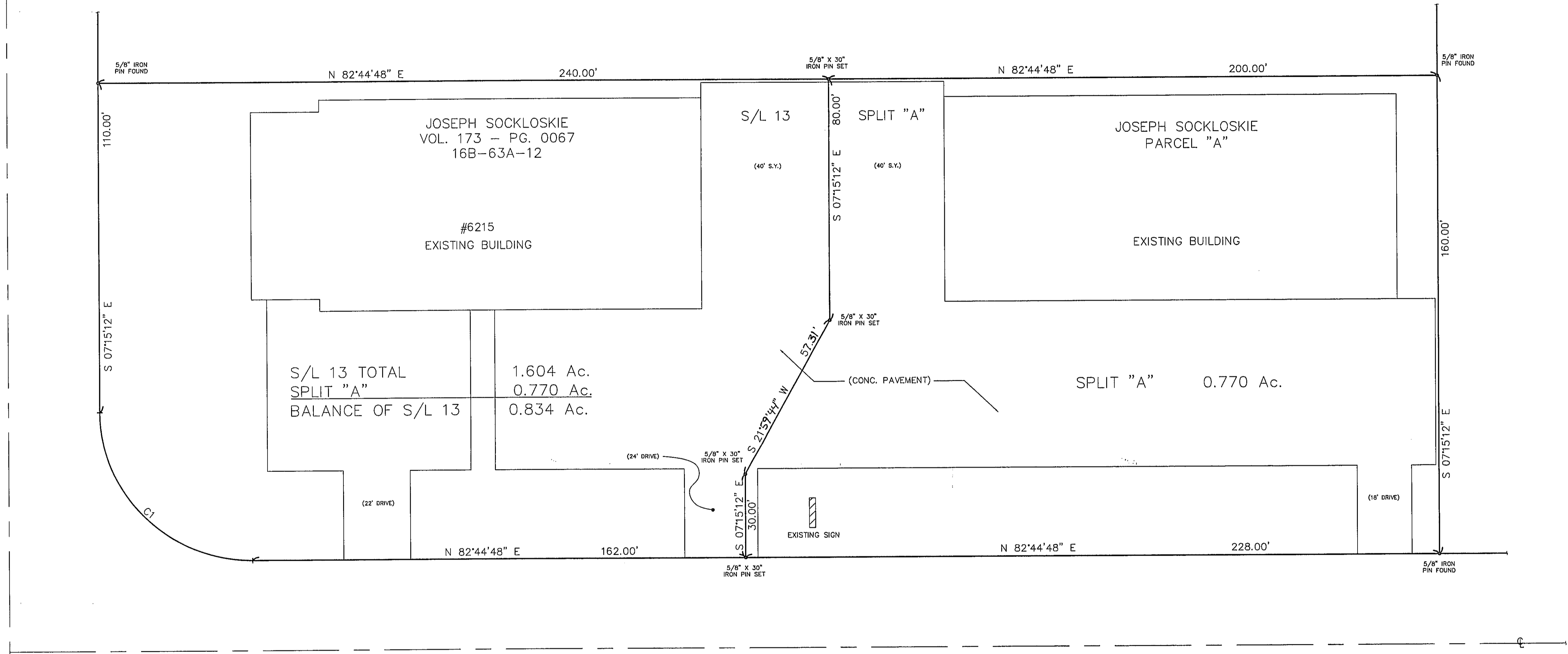
PINE INDUSTRIAL PARK SUBDIVISION
VOL. W - PG. 39

O F ASSOCIATES
VOL. 513 - PG. 0030
16B-63A-13

S/L 14



HEISLEY ROAD - 60'



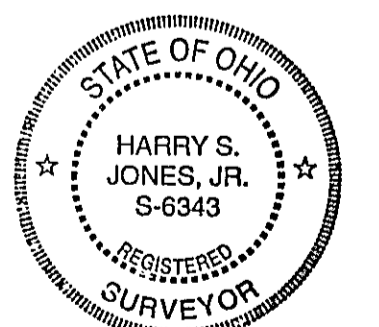
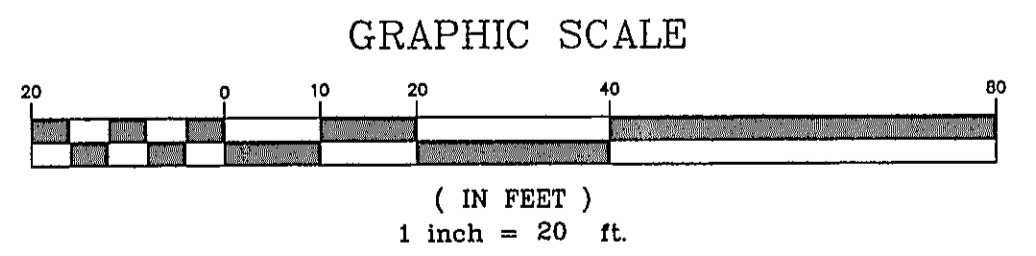
S/L 12
JOSEPH SOCKLOSKIE
VOL. 860 - PG. 0625
16B-63A-11

S/L 13 TOTAL
SPLIT "A"
BALANCE OF S/L 13
1.604 Ac.
0.770 Ac.
0.834 Ac.

SPLIT "A" 0.770 Ac.

CURVE	LENGTH	RADIUS	TANGENT	CHORD	BEARING	DELTA
C1	78.54	50.00	50.00	70.71	S52°15'12"E	90°00'00"

*BASIS OF BEARING: CENTERLINE
OF HEISLEY ROAD - 47°15'12" N*



Harry S. Jones, Jr.
DATE: 8/5/02

REV. NO.	DESCRIPTION	DATE	BY	CHK'D
1	REVISED	5/9/02	B.P.	H.J.
2	REVISED	8/5/02	HJ	HJ

bj BABCOCK, JONES AND ASSOCIATES, INC
CIVIL ENGINEERS - SURVEYORS - LAND PLANNERS
PAINESVILLE OHIO 44077

DATE 5/7/02
DESIGN BY H.J.
DRAWN BY B.P.
APPROVED BY H.J.

PLAT OF SURVEY
FOR
JOSEPH SOCKLOSKIE
CITY OF MENTOR COUNTY OF LAKE STATE OF OHIO

SCALE	1"=20'
JOB NO	02-078
SHEET	1
OF	1