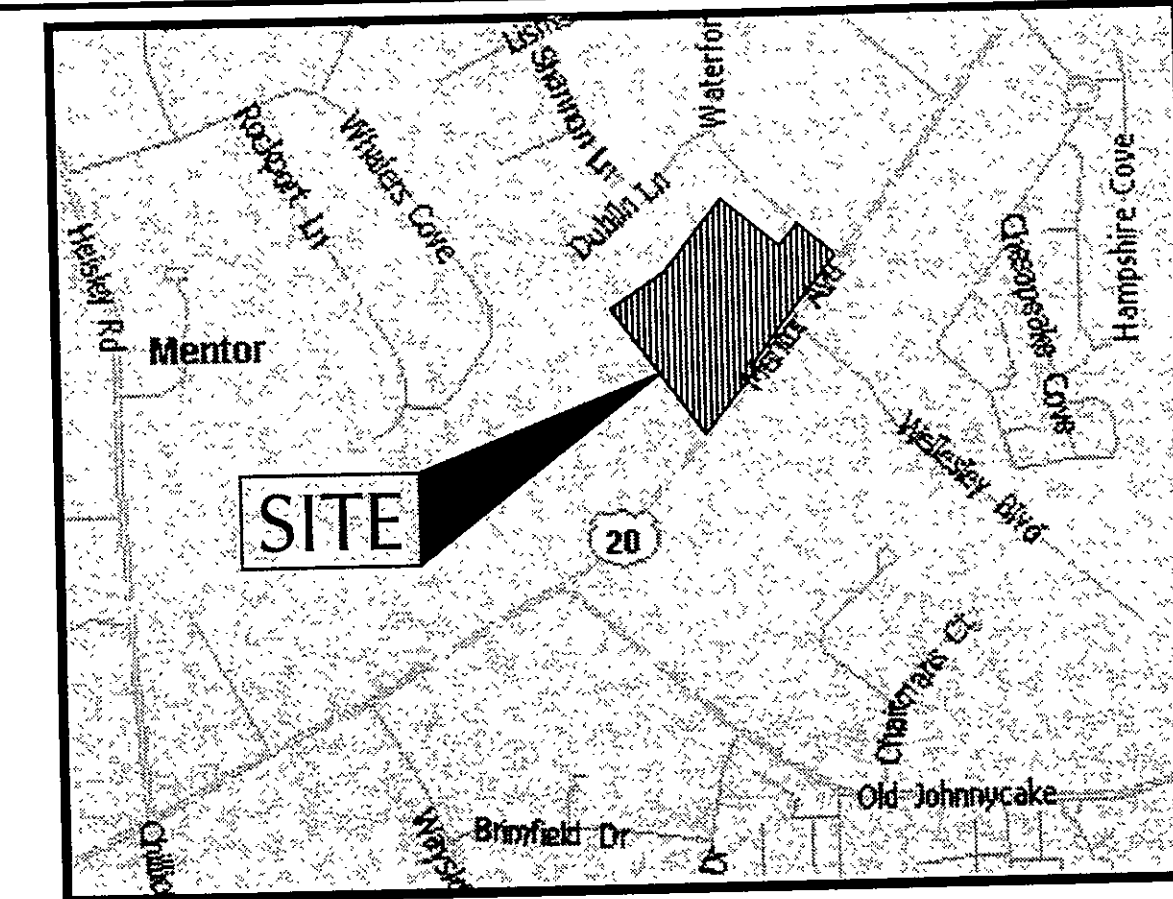


LOT SPLIT PLAT
 PART OF LOTS 1 AND 2, TRACT 6, CITY OF MENTOR AND
 PART OF LOT 37, TRACT 4, TOWNSHIP OF PAINESVILLE
 COUNTY OF LAKE
 STATE OF OHIO



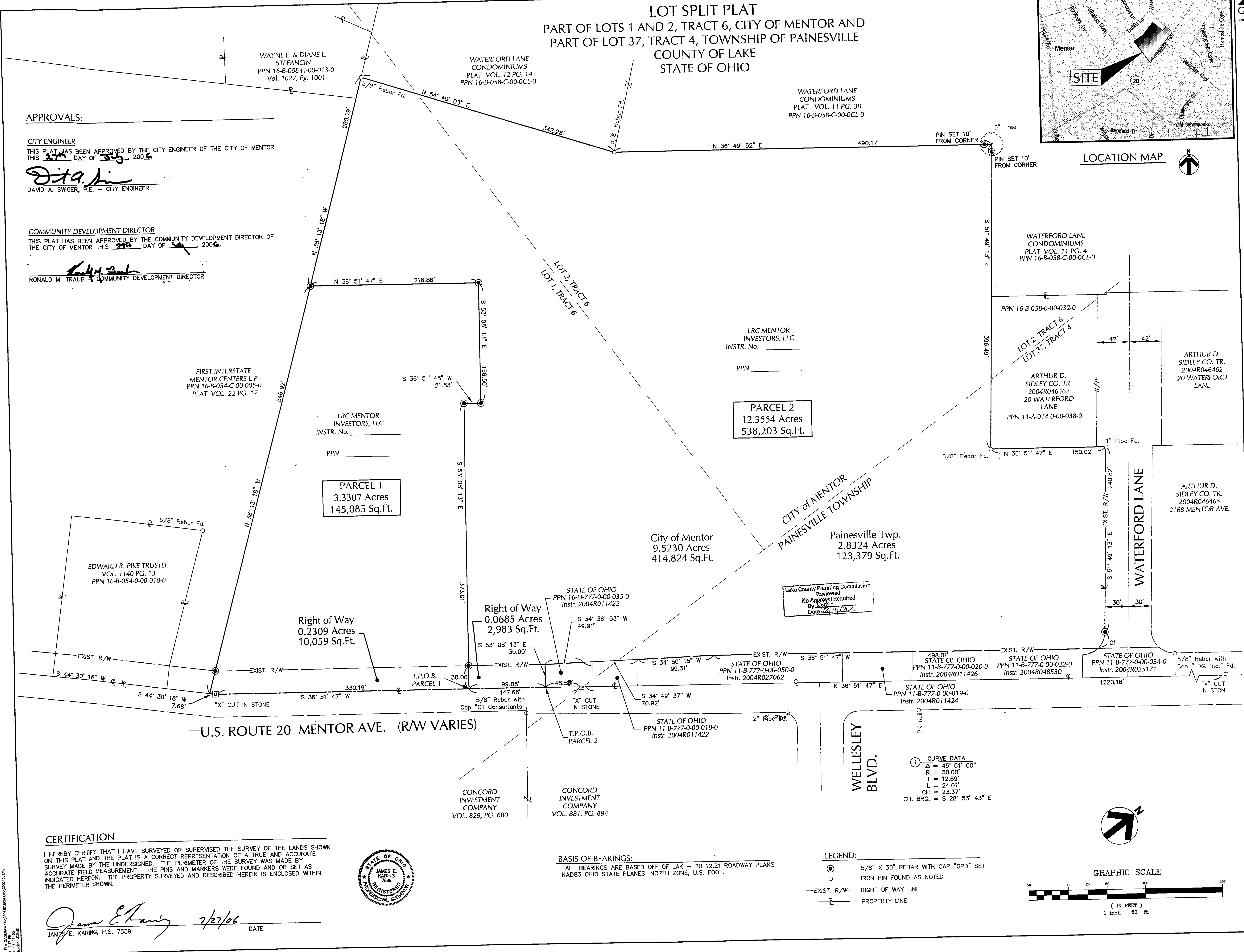
APPROVALS:

CITY ENGINEER
 THIS PLAT HAS BEEN APPROVED BY THE CITY ENGINEER OF THE CITY OF MENTOR
 THIS 27th DAY OF July, 2006

David A. Swiger
 DAVID A. SWIGER, P.E. - CITY ENGINEER

COMMUNITY DEVELOPMENT DIRECTOR
 THIS PLAT HAS BEEN APPROVED BY THE COMMUNITY DEVELOPMENT DIRECTOR OF
 THE CITY OF MENTOR THIS 27th DAY OF July, 2006

Ronald M. Traub
 RONALD M. TRAUB - COMMUNITY DEVELOPMENT DIRECTOR



CERTIFICATION

I HEREBY CERTIFY THAT I HAVE SURVEYED OR SUPERVISED THE SURVEY OF THE LANDS SHOWN ON THIS PLAT AND THE PLAT IS A CORRECT REPRESENTATION OF A TRUE AND ACCURATE SURVEY MADE BY THE UNDERSIGNED. THE PERIMETER OF THE SURVEY WAS MADE BY ACCURATE FIELD MEASUREMENT. THE PINS AND MARKERS WERE FOUND AND OR SET AS INDICATED HEREON. THE PROPERTY SURVEYED AND DESCRIBED HEREIN IS ENCLOSED WITHIN THE PERIMETER SHOWN.

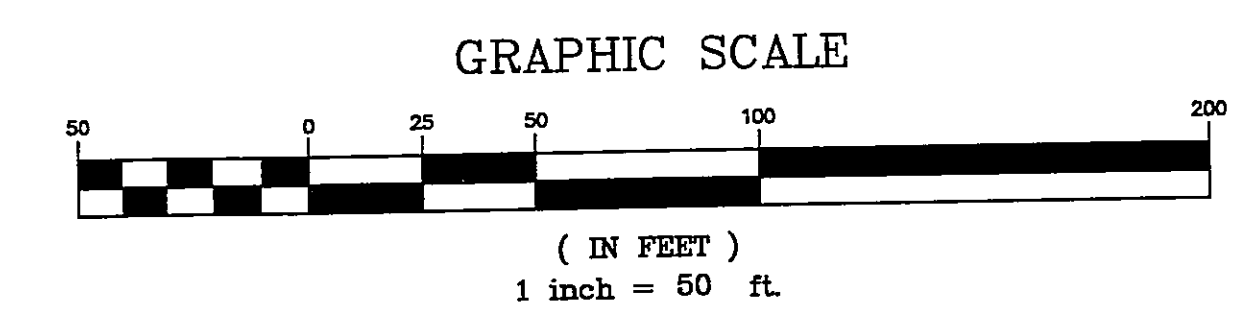
James E. Karing 7/27/06
 JAMES E. KARING, P.S. 7539 DATE



BASIS OF BEARINGS:
 ALL BEARINGS ARE BASED OFF OF LAK - 20 12.21 ROADWAY PLANS
 NAD83 OHIO STATE PLANES, NORTH ZONE, U.S. FOOT.

LEGEND:

- 5/8" X 30" REBAR WITH CAP "GPD" SET
- IRON PIN FOUND AS NOTED
- - - EXIST. R/W - RIGHT OF WAY LINE
- — — PROPERTY LINE



REV.	DATE	DESCRIPTION

DESIGNED	DATE

DRAWN	DATE
MJR	7-25-2006

CHECKED	DATE