

CONCORD INVESTMENT CO.
V. 833 PG. 7; V. 834 PG. 457
PPN 10A-28B-026

LANDMARK HOMES INC.
V. 1018 PG. 1165
PPN 10A-28B-002

B-2 GENERAL BUSINESS

BRIAN W. & JUSTINE A. WOLLERMAN
REC. # 99024034
PPN 16A-021-41, 10A-28B-34

CONCORD INVESTMENT CO.
V. 829 PG. 600, 601
PPN 11A-28B-018
B-1 GENERAL BUSINESS

SHIDLER/WEST FINANCE PARTNERS V, L.P.
V. 512 PG. 596
PPN 16A-27-021
11.7241 AC.
FFL 105.77

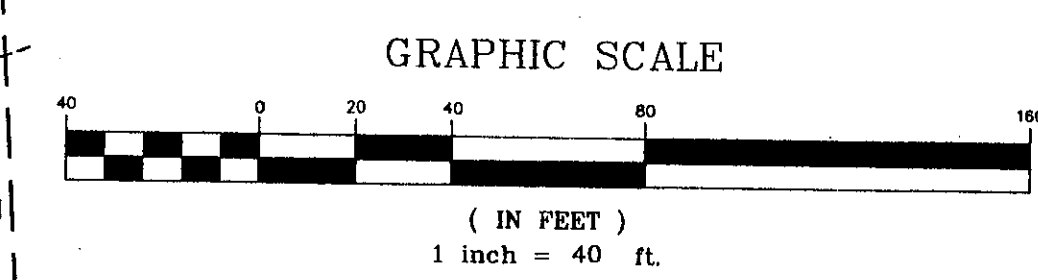
BUILDING AREA
144,400 S.F. +/-

ITEM #10 - AMENDMENT TO
LEASE AND RESERVATION
V. 21 P. 1241
ITEM #11 - RECIPROCAL
EASEMENT AGREEMENT
V. 1001 P. 189
RE-RECORDED V. 1028 P. 750

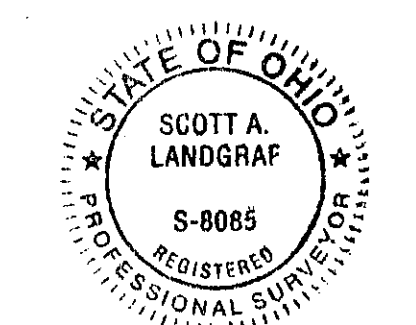
VAVOLINE INSTANT OIL CHANGE
V. 504 PG. 431
PPN 16A-27-024
0.1461 AC.
FFL 101.73

BOSLEY FAMILY REALTY LTD.
V. 1174 PG. 1133
PPN 16A-27-002
0.95 AC.
FFL 101.74

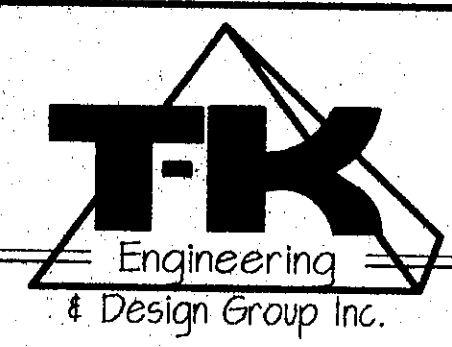
U.S. RT. 20 (60') (MENTOR AVENUE)



BEARINGS ARE BASED ON AN ASSUMED
MERIDIAN AND INDICATE ANGLES ONLY.



SURVEY BY: ALTA/ACSM SURVEYORS, INC. DATE: 02/27/00 12:06:21 PM EST



"Concept...Thru...Construction"
TELEPHONE 440-915-1614 / 442-6030 * FAX 915-1174
35350 CURTIS BLVD. SUITE 110 * EASTLAKE, OHIO 44045

REV.	DESCRIPTION	BY	DATE

ALTA/ACSM SURVEY

LOWES HOME CENTERS, INC.
MENTOR, OHIO

HORIZ: 1" = 40'	VERT: -
DRAWN BY: DMK	CHECKED BY: SAL
DATE: FEBRUARY, 2001	
JOB NUMBER	SHEET
99060	2 OF 2