

Heil Farm Subdivision

SITUATED IN THE CITY OF MENTOR, COUNTY OF LAKE AND STATE OF OHIO AND KNOWN AS BEING PART OF LOT 9, TRACT 2

ADVERSE CLAIMS

In a known that the Heil Farm Subdivision was first created by the Heil Farm Subdivision and is a subdivision of the Heil Farm Tract.

In a known that the Heil Farm Subdivision was first created by the Heil Farm Tract and is a subdivision of the Heil Farm Tract.

Consent and acknowledgment to the provisions of:

Notary Public

Notary Public

Notary Public

Notary Public

Notary Public

Notary Public

Notary Public

Notary Public

Notary Public

Notary Public

Notary Public

Notary Public

Notary Public

Notary Public

Notary Public

Notary Public

Notary Public

Notary Public

Notary Public

Notary Public

Notary Public

Notary Public

Notary Public

Notary Public

Notary Public

Notary Public

Notary Public

Notary Public

Notary Public

Notary Public

Notary Public

Notary Public

Notary Public

Notary Public

Notary Public

Notary Public

Notary Public

Notary Public

Notary Public

Notary Public

Notary Public

Notary Public

Notary Public

Notary Public

Notary Public

Notary Public

Notary Public

Notary Public

Notary Public

Notary Public

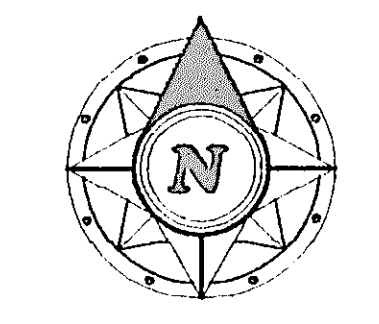
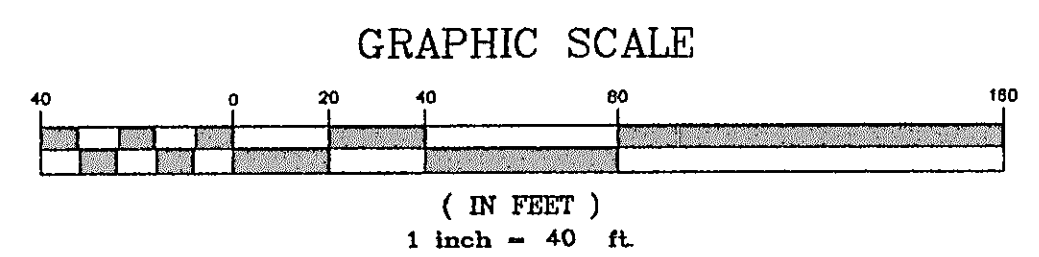
Notary Public

Notary Public

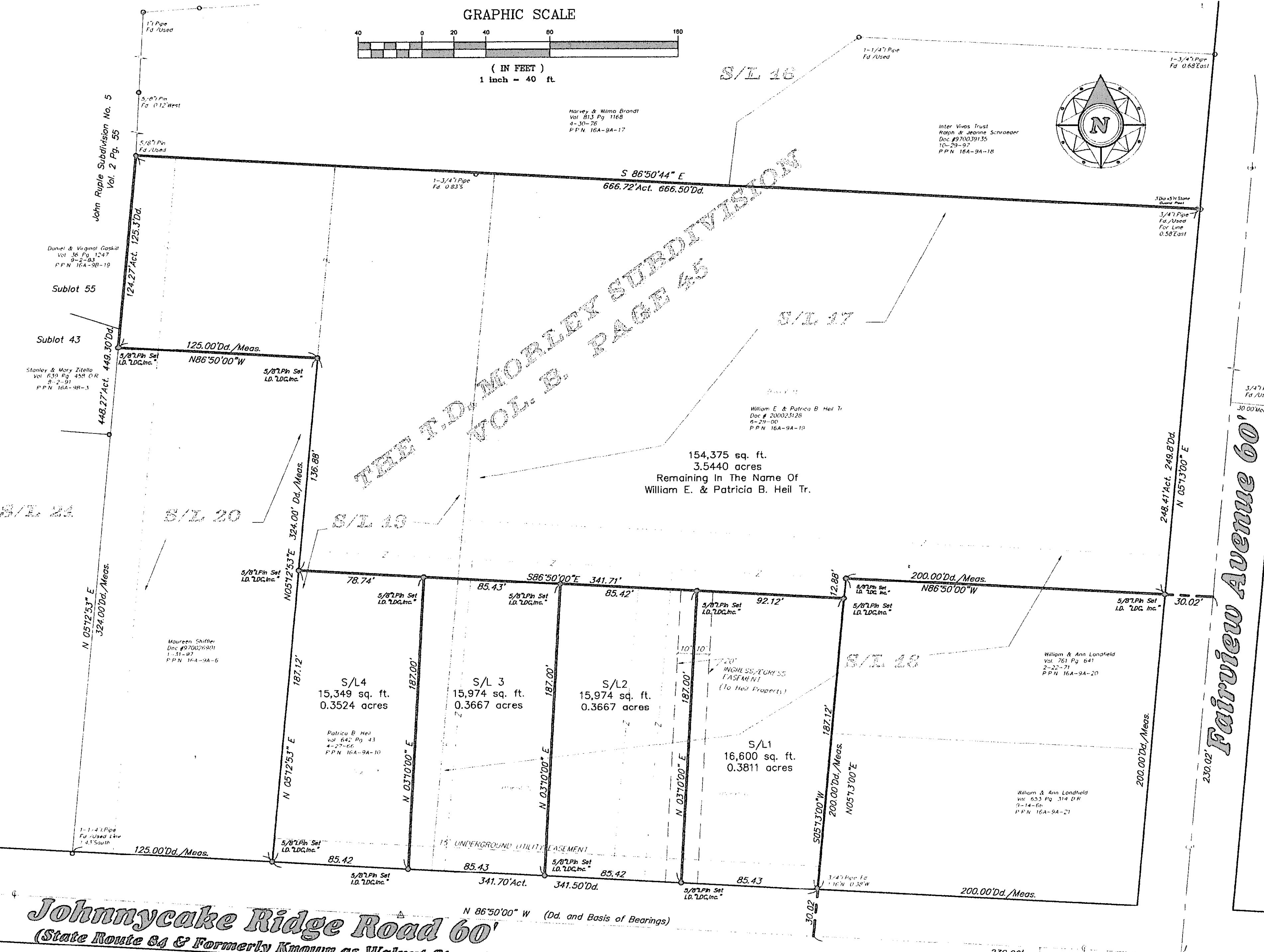
Notary Public

Notary Public

Notary Public



THE T.D. MORLEY SUBDIVISION VOL. B. PAGE 45



LDG Inc. dba LDG
LAND DESIGN consultants
 Civil Engineers and Surveyors
 8555 EAST AVENUE • MENTOR, OHIO 44060
 TELEPHONE 255-0463 354-6338 951-LAND

REV. No.	DATE	BY	CHK'D

LDG Inc. dba LDG
LAND DESIGN consultants
 www.LDCinc.net
 ENGINEERS · PLANNERS SURVEYORS

8555 East Avenue Mentor, Ohio 44060
 TEL: (440) 255-0463 (440) 951-LAND
 (440) 354-6338 FAX: (440) 255-9575

1321 Lear Industrial Park Avon, Ohio 44011
 TEL: (440) 932-5691 (440) 932-6802
 FAX: (440) 932-5681

DATE 10/11/02
 SCALE: HOR
 VERT
 FILENAME PLAT
 COMPUTER RAT
 FIELD CREW

1467
 03524
 03524
 03524
 14669 AC. DL

SHEET OF
 1 / 1
 CONTRACT No.
 HEILP1-0101