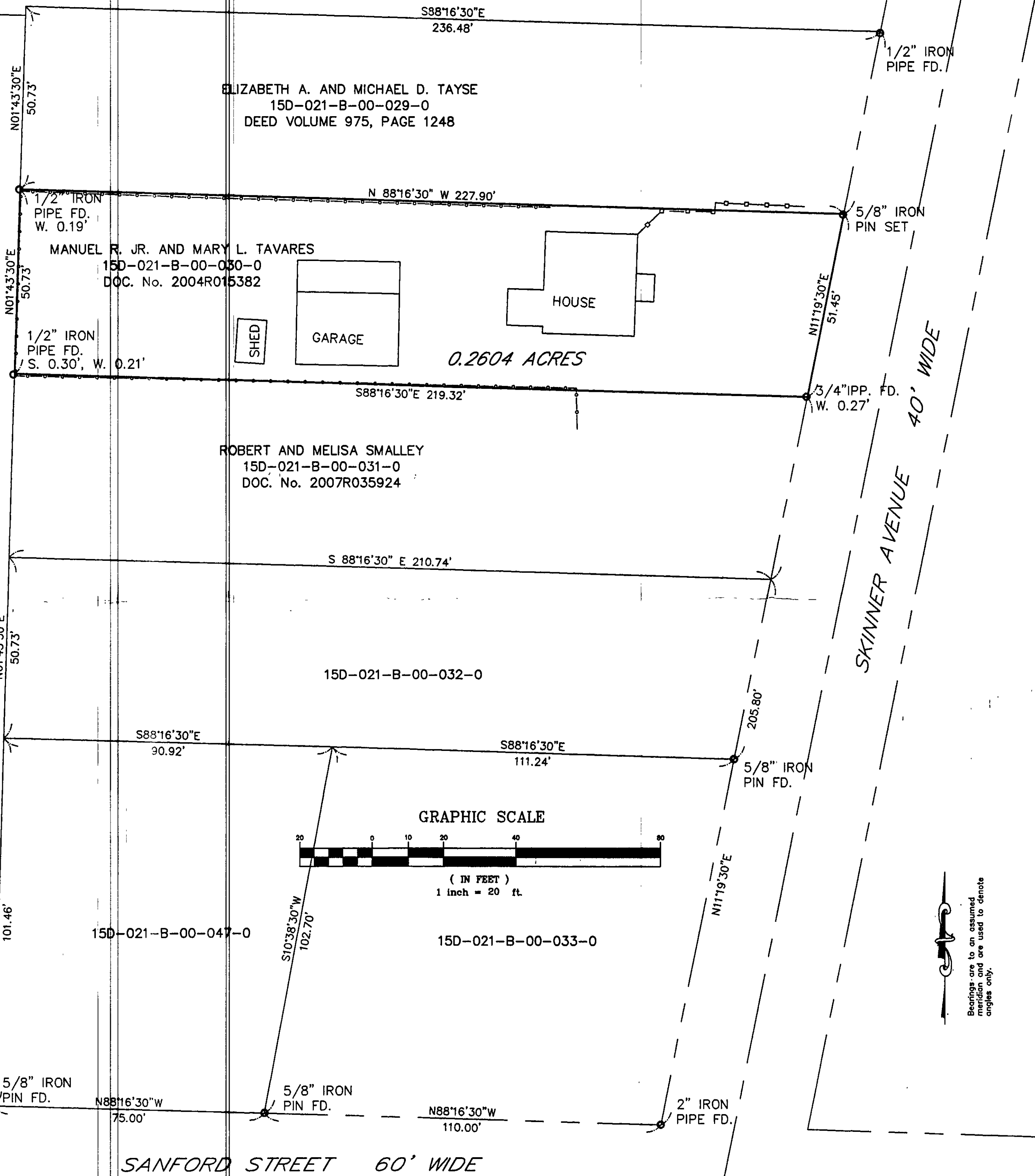


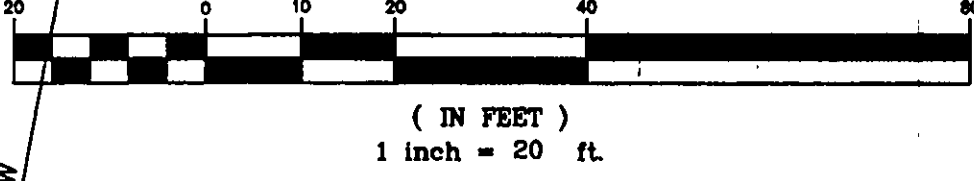
BOUNDARY SURVEY OF PP# 15-D-021-B-00-030-0

SITUATED IN PAINESVILLE CITY, LAKE COUNTY, OHIO
 BEING PART OF SUBLOT 11 IN THE A.E. KINTNER ALLOTMENT AND TRACT 4 IN ORIGINAL PAINESVILLE TOWNSHIP

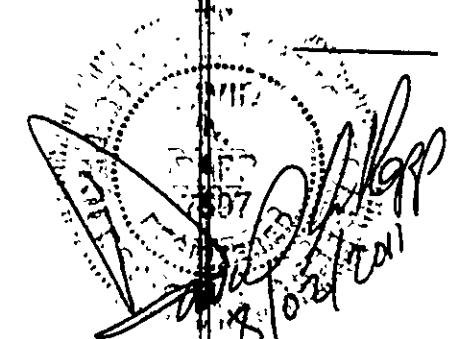
DOROTHY C. SPIVAK
 15D-021-B-00-034-0
 DOC. No. 2007R033253



GRAPHIC SCALE



Bearings are to an assumed meridian and are used to denote angles only.



* All pins set are 30 inches long with plastic caps bearing the imprint "DRS 7597"

DAVID RAPP SERVICES
 340° DAYTON ROAD MADISON, OHIO 44057
 440-983-1607

DATE: AUG., 2011	31051
DRAWN BY: DAR	
CHECKED BY: DAR	
APPROVED BY: DAR	1 1
PS No. 7597	

DISTANCES ARE GIVEN IN FEET AND DECIMAL PARTS THEREOF UNLESS OTHERWISE NOTED. SURVEYED AUGUST, 2011. THIS PLAT WAS PREPARED UNDER MY SUPERVISION AND IS CORRECT TO THE BEST OF MY KNOWLEDGE AND BELIEF

David Rapp
 DAVID A. RAPP P.S. No. 7597

SOURCES:
 DEEDS AND PLATS AS NOTED