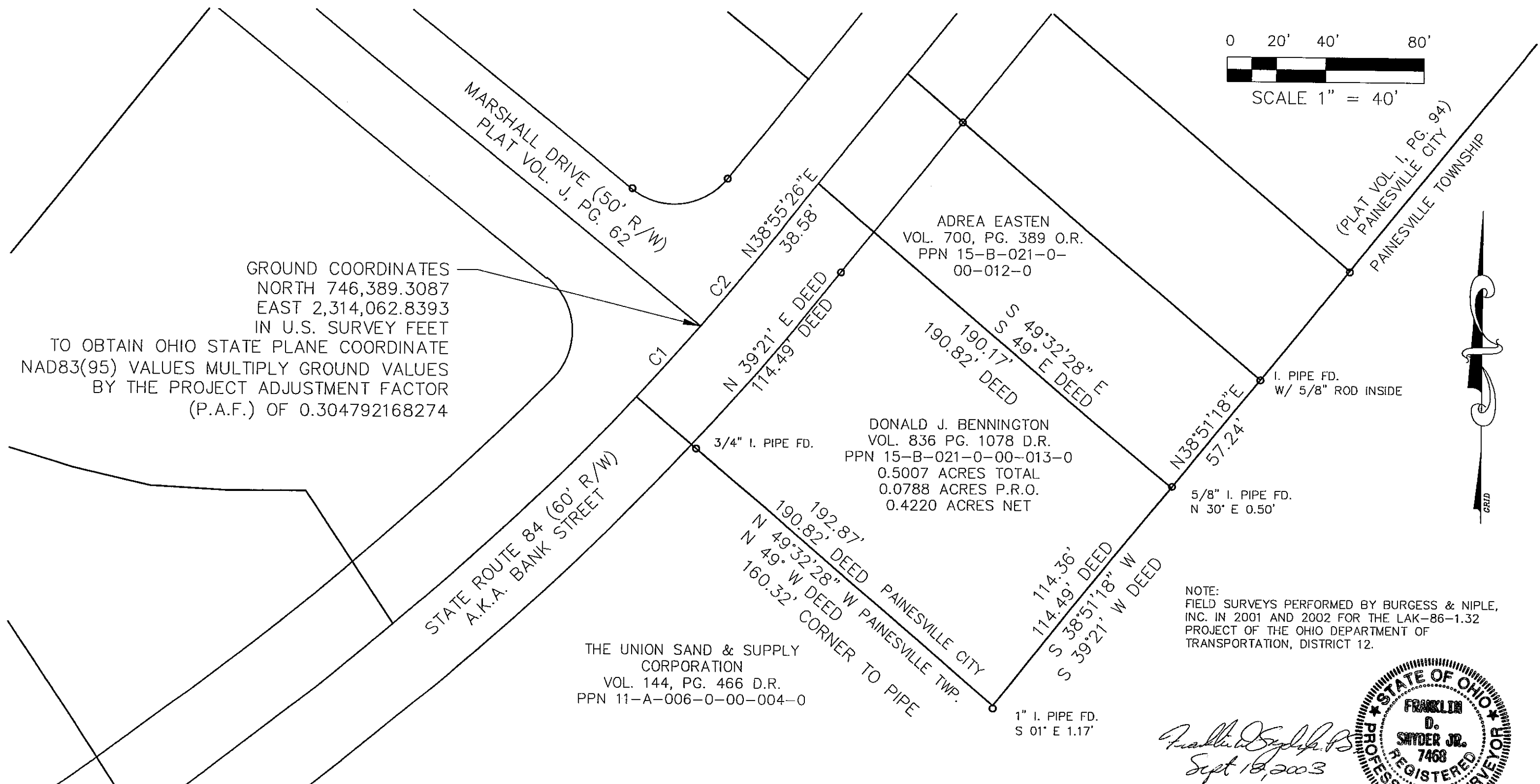
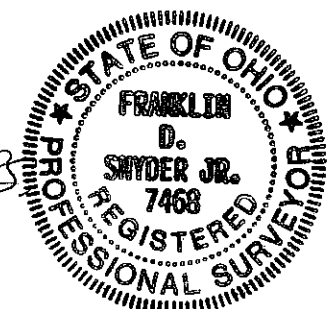


GROUND COORDINATES
 NORTH 746,389.3087
 EAST 2,314,062.8393
 IN U.S. SURVEY FEET
 TO OBTAIN OHIO STATE PLANE COORDINATE
 NAD83(95) VALUES MULTIPLY GROUND VALUES
 BY THE PROJECT ADJUSTMENT FACTOR
 (P.A.F.) OF 0.304792168274



NOTE:
 FIELD SURVEYS PERFORMED BY BURGESS & NIPLE,
 INC. IN 2001 AND 2002 FOR THE LAK-86-1.32
 PROJECT OF THE OHIO DEPARTMENT OF
 TRANSPORTATION, DISTRICT 12.



Franklin D. Snyder Jr.
 Sept 18, 2003

CURVE TABLE						
CURVE	LENGTH	RADIUS	DELTA	TANGENT	CH. BRG.	CHORD
C1	39.14'	1117.38'	2°00'25"	19.57'	N41°48'20"E	39.13'
C2	36.63'	1117.38'	1°52'42"	18.32'	N39°51'47"E	36.63'

MAP TO ACCOMPANY DESCRIPTION
 PREPARED IN DECEMBER 2002.
 PART OF ORIGINAL PAINESVILLE TOWNSHIP
 LOT 6, TRACT 2 IN TOWNSHIP 10, RANGE VIII
 OF THE CONNECTICUT WESTERN
 RESERVE (ORIGINAL CONCORD TOWNSHIP),
 LAKE COUNTY, OHIO

BURGESS & NIPLE