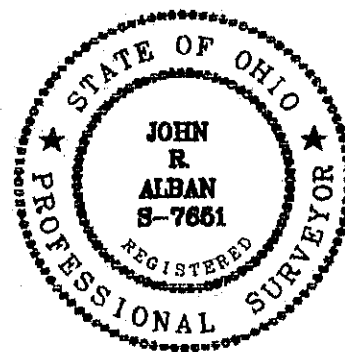


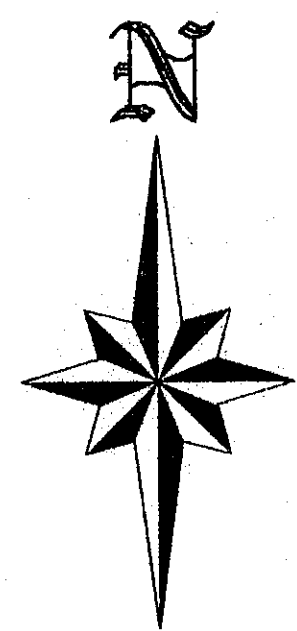
# LOT SPLIT PLAN OF P.P.N. 11B-66-009 FOR W.E.B. DEVELOPERS, INC. @ 785 LAKESHORE BLVD.

SITUATED IN THE TOWNSHIP OF PAINESVILLE, COUNTY OF LAKE, AND STATE OF OHIO AND KNOWN AS BEING A PART OF LOT 21, TRACT 4, IN SAID TOWNSHIP

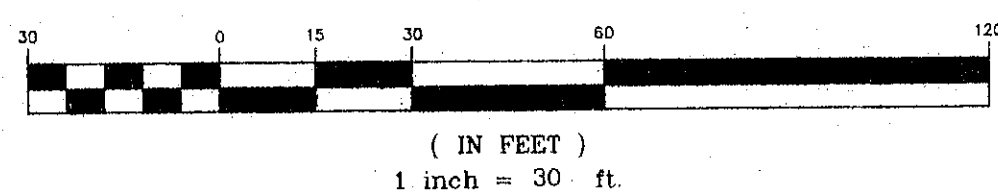
JANUARY 29, 2002



*John R. Alban*  
1/29/02  
DATE  
LOT SPLIT CERTIFICATION  
ORIGINAL BOUNDARY SURVEY PERFORMED BY LAKE ENGINEERING, INC. IN JULY 1996

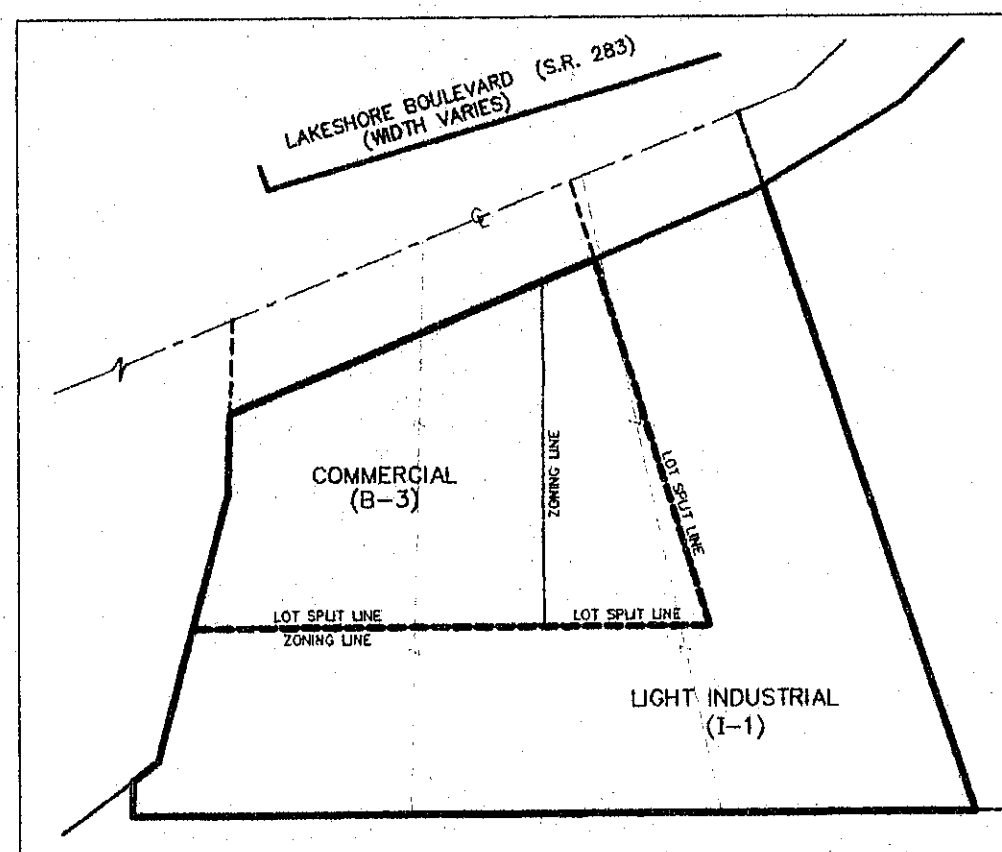


GRAPHIC SCALE

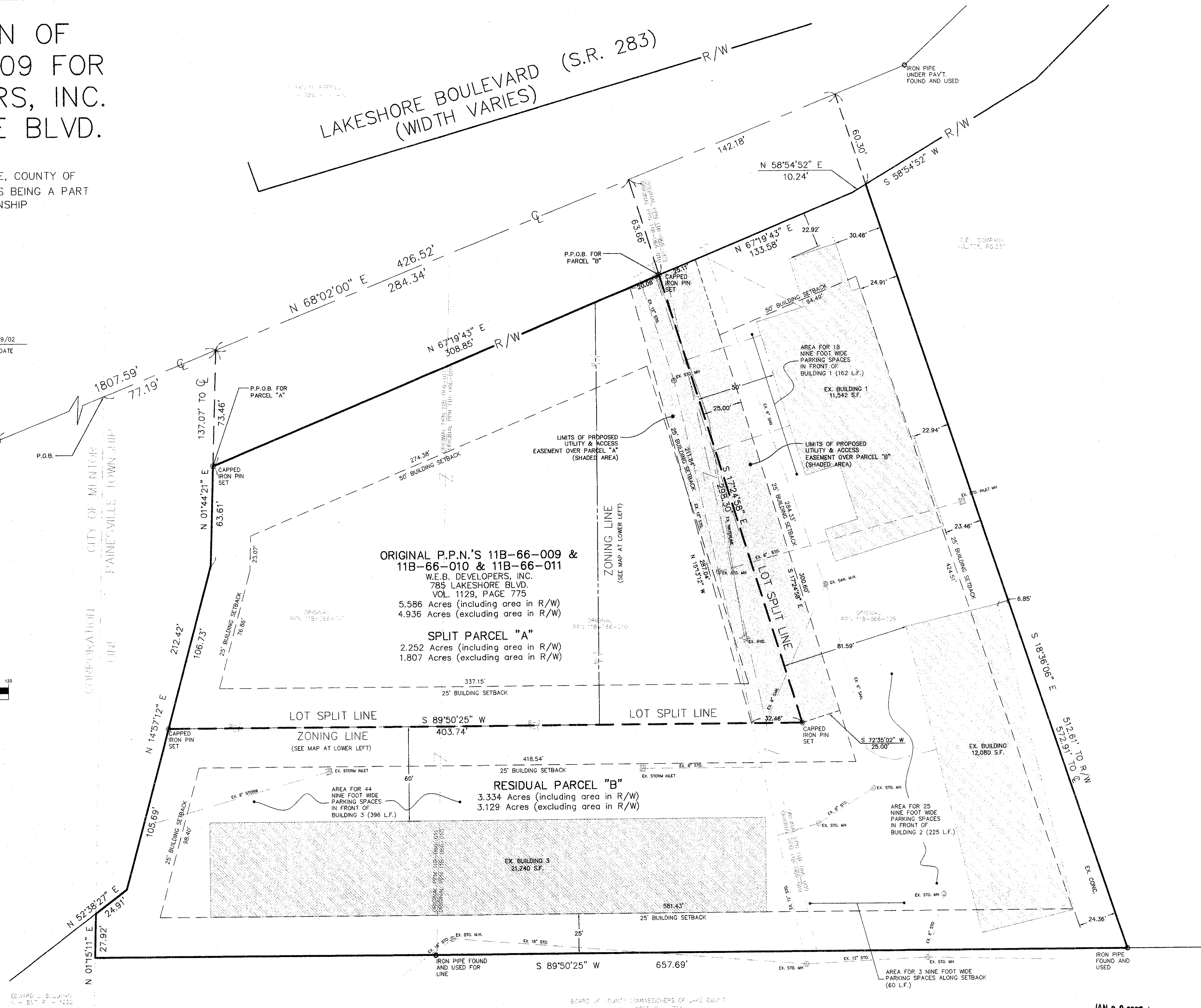


**RESIDUAL PARCEL BUILDING & PARKING DATA**

EXISTING BUILDING AREA = 44,862 s.f.  
PARKING REQUIRED = 90 spaces (1 space per 500 s.f. ~ 9'X 20' typical)  
PARKING SHOWN = Area for 90 spaces available



ZONING MAP  
SCALE: 1" = 150'



Rev.	Description	Date	By
1	REVISIONS AS PER LAKE COUNTY PLANNING COMMISSION	10/29/01	JAL

Drawn By: STW Checked By: Approved By:	
Date: January 29, 2002	

<b>Greenland Consulting, Inc.</b> Planning - Surveying - Engineering 6620 Hopkins Road Mentor, OH 44060 Phone: (440) 205-8167 Fax: (440) 205-1929 E-Mail: green-land@worldnet.att.net	
Scale: Horiz. 1" = 30'	Vert. 1" = NA
Sheet No. 1	Of 1
Filename: lotsplit.dwg	

*Lot Split Plan of PPN 11B-66-009  
for W.E.B. Developers, Inc.  
at 785 Lakeshore Boulevard  
Painesville Township ~ Lake County ~ State of Ohio*

JAN 9 9 2002

P:\SDSPROJ\01-084\mg\intsplit.dwg Jan 29 22:31:12 2002 mike.platt