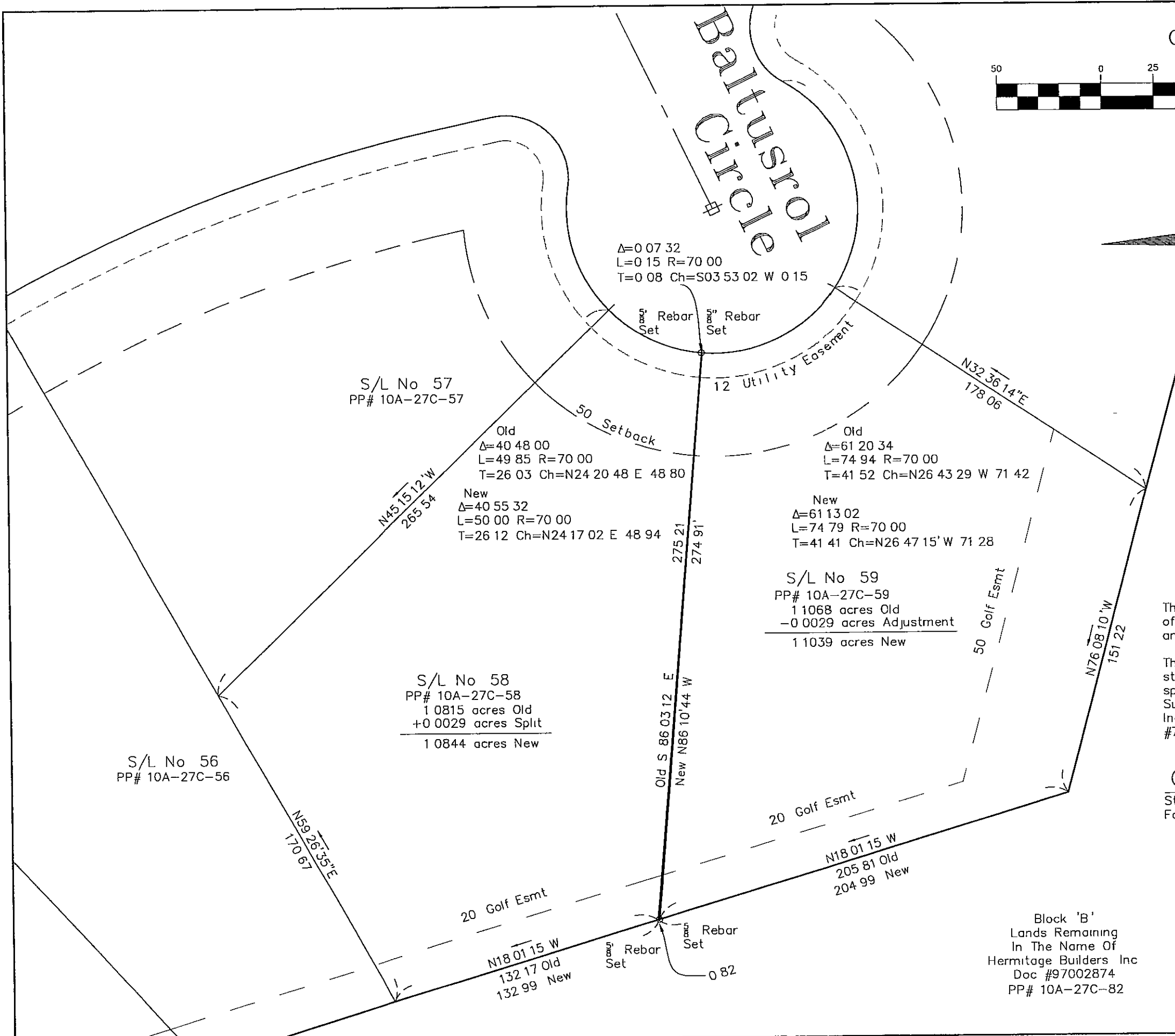


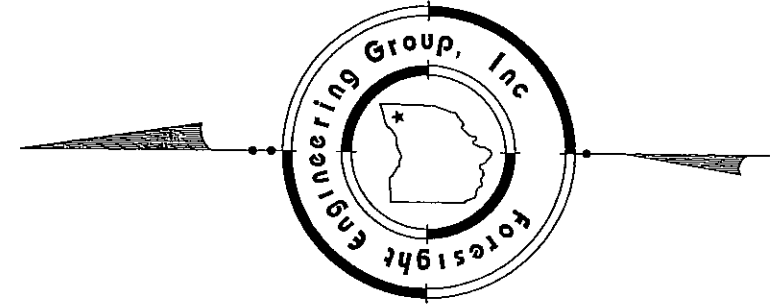
I:\edk\lora\lora\19607\Cook\Plot\Sublot 58.dwg, 01/17/01, 04:49:22 PM, Copyright Foresight Engineering Group, Inc



GRAPHIC SCALE



(IN FEET)
1 inch = 50 ft



Little Mountain Country Club Subdivision Vol 39
Page 13 of the Lake County Records of Plats All
Lots shown owned by Hermitage Builders Inc by
Doc #970002874 of the Lake County Records The
bearings as used hereon are based on the said
Little Mountain Country Club Subdivision

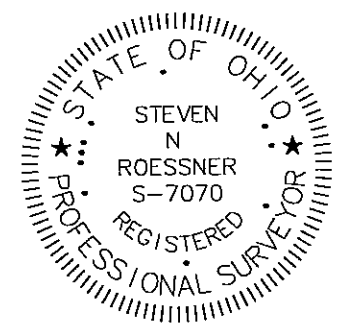
All 5/8\"/>

This Plat was prepared without the benefit of an abstract
of Title and is subject to any state of facts revealed by
an examination of the same

This Plat represents a Survey which meets the minimum
standards for a Boundary Survey in The State of Ohio as
specified in the Administrative Code Chapter 4733-37
Surveyed in January 20001 by Foresight Engineering Group
Inc Under the supervision of Steven N Roessner P S
#7070

Steven N Roessner 1/17/2001
Steven N Roessner P S #7070 Date
Foresight Engineering Group Inc

Block 'B'
Lands Remaining
In The Name Of
Hermitage Builders Inc
Doc #97002874
PP# 10A-27C-82



Foresight Engineering Group
Engineers &
Surveyors

SCALE	1" = 50'
Herz	None
Vert	
None	
FILE NAME	I:\Sew\19607\Sublot 58
DATE	Jan 17 2001

Sublot 58 & 59
Little Mountain Country Club Subdivision
Concord Twp - Lake County - Ohio
Lot Line Adjustment

SHEET NO