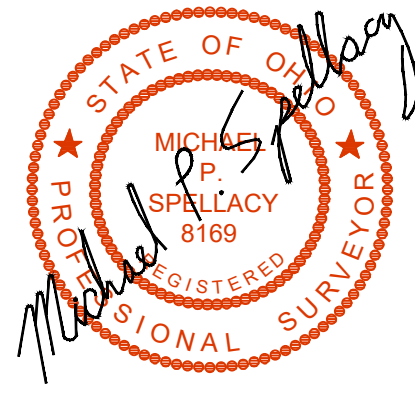
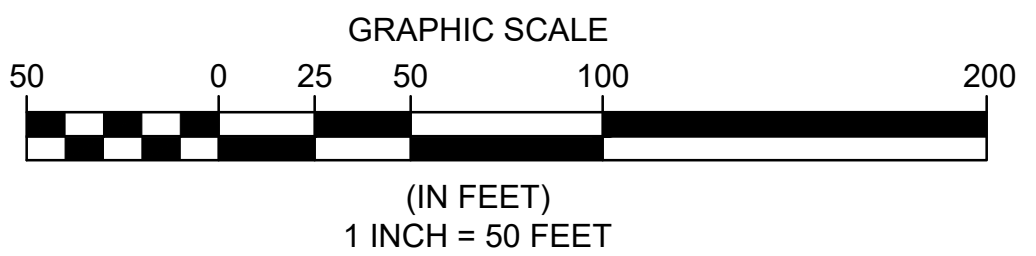
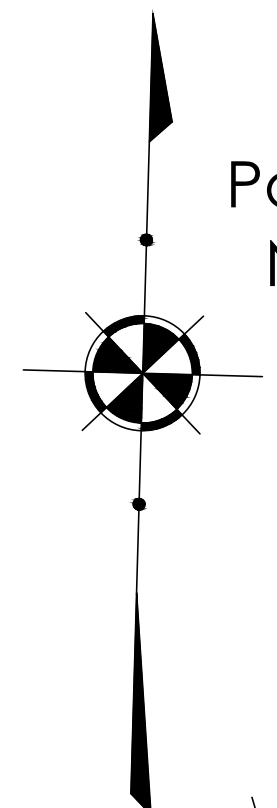


BOUNDARY SURVEY
PARCEL 02-A-007-0-00-019-0

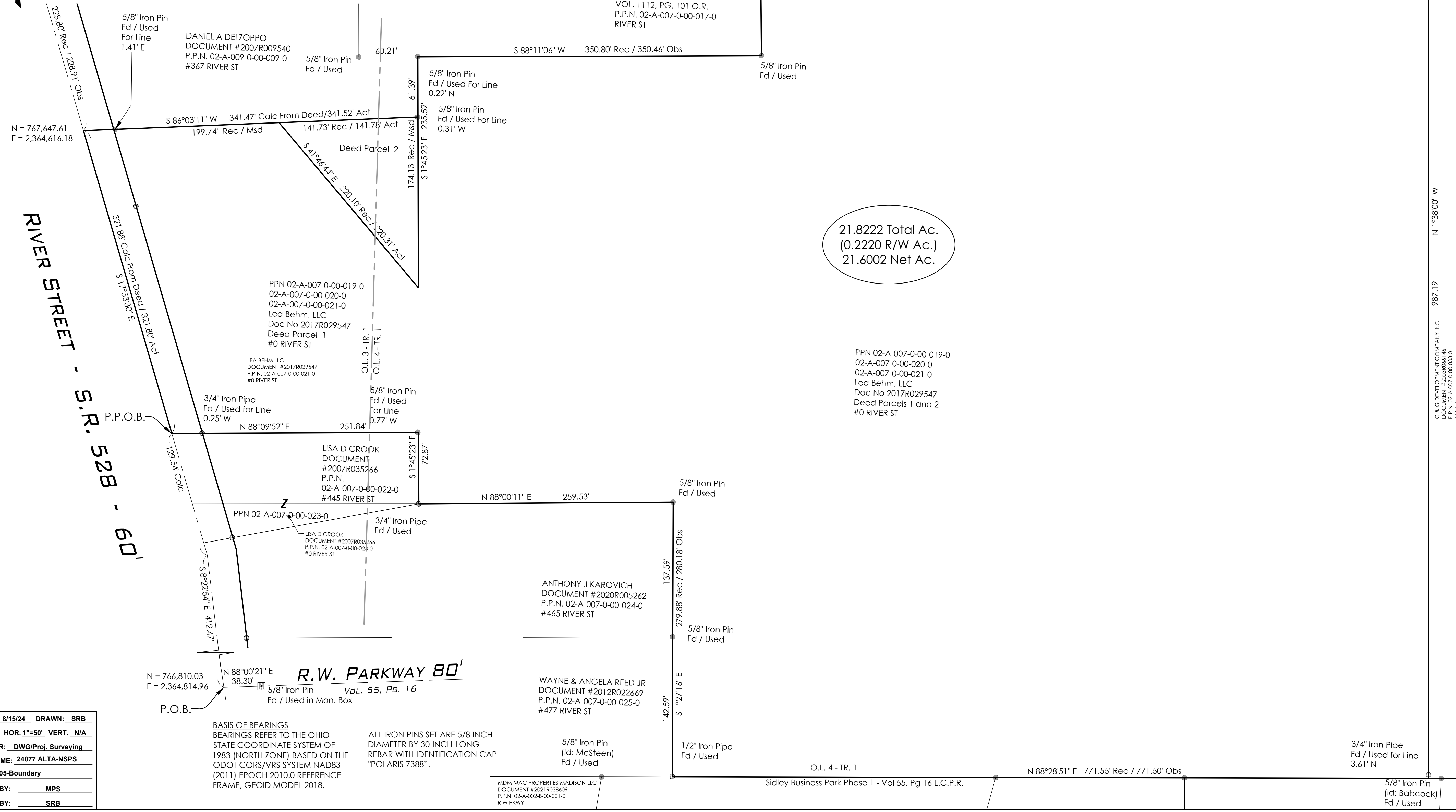
Part of Original Madison Township Lots 3 & 4 In Tract 1
 Now in the Village of Madison - Lake County - Ohio
 August 15, 2024 Scale 1" = 50'



MADISON BOARD OF TRUSTEES CEMETERY
 VOL. 1112, PG. 101 O.R.
 P.P.N. 02-A-007-0-00-017-0
 RIVER ST

VILLAGE OF MADISON
 VOL. 111, PG. 449 D.R.
 P.P.N. 02-A-007-0-00-018-0

MADISON BOARD OF TRUSTEES CEMETERY
 VOL. 1112, PG. 101 O.R.
 P.P.N. 02-A-007-0-00-017-0



RIVER STREET
NURSING HOME

VILLAGE OF MADISON - LAKE COUNTY - OHIO

POLARIS ENGINEERING & SURVEYING, INC.
 34600 CHARDON ROAD - SUITE D
 WILLOUGHBY HILLS, OHIO 44094
 (440) 944-4433
 www.polaris-es.com



BOUNDARY SURVEY

PREPARED FOR:
BAUER
ARCHITECTURE, LLC
 3692 BAIR RD. NW
 DOVER, OHIO 44622
 PHONE: (330) 204-2673
 CONTACT: BRIAN L. BAUER

CONTRACT NO.

24077

SHEET	OF
01	01

DATE: 8/15/24 DRAWN: SRB
 SCALE: HOR. 1"=50' VERT. N/A
 FOLDER: DWG/Proj_Surveying
 FILENAME: 24077 ALTA-NSPS
 TAB: 05-Boundary
 BNDY. BY: MPS
 BASE. BY: SRB

BASIS OF BEARINGS
 BEARINGS REFER TO THE OHIO
 STATE COORDINATE SYSTEM OF
 1983 (NORTH ZONE) BASED ON THE
 ODOT CORS/VRS SYSTEM NAD83
 (2011) EPOCH 2010.0 REFERENCE
 FRAME, GEOID MODEL 2018.

ALL IRON PINS SET ARE 5/8 INCH
 DIAMETER BY 30-INCH-LONG
 REBAR WITH IDENTIFICATION CAP
 "POLARIS 7388".

O.L. 4 - TR. 1

Sidley Business Park Phase 1 - Vol 55, Pg 16 L.C.P.R.

5/8" Iron Pin
 (ld: Babcock)
 Fd / Used