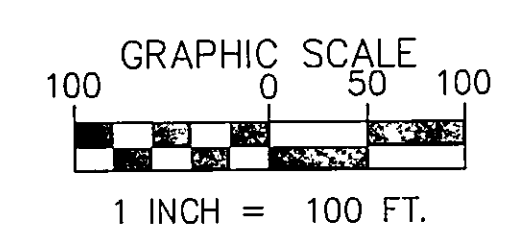
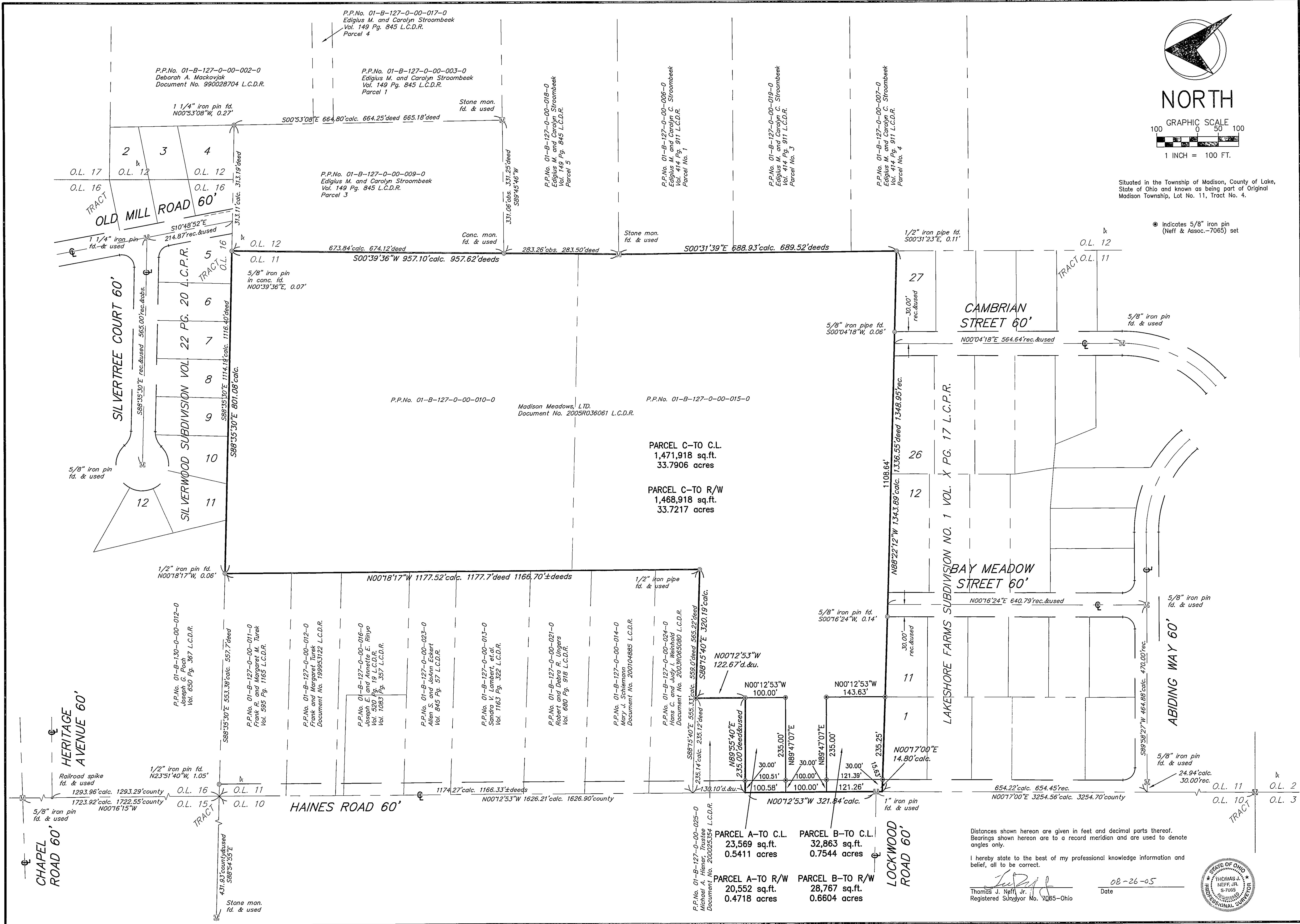


NORTH



Situated in the Township of Madison, County of Lake, State of Ohio and known as being part of Original Madison Township, Lot No. 11, Tract No. 4.

● Indicates 5/8" iron pin (Neff & Assoc.-7065) set

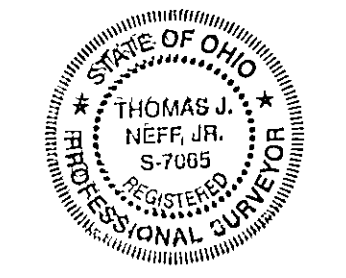


Distances shown hereon are given in feet and decimal parts thereof. Bearings shown hereon are to a record meridian and are used to denote angles only.

I hereby state to the best of my professional knowledge information and belief, all to be correct.

Thomas J. Neff, Jr.
Registered Surveyor No. 7085-Ohio

08-26-05
Date



SCALE	1"=100'
JOB NO.	12796
DRAWN BY	FJT
DATE	JULY 2005
REV. NO.	12796-PP
DESCRIPTION	
BY	

NEFF & ASSOCIATES
A PROFESSIONAL CORPORATION
ENGINEERS, PLANNERS
LAND SURVEYORS

6403 York Road Parma Heights, Ohio 44130
(440) 884-3100 FAX (440) 884-4443

MADISON MEADOWS, LTD.
PLAT OF SURVEY AND PARTITION
TOWNSHIP OF MADISON, COUNTY OF LAKE, STATE OF OHIO