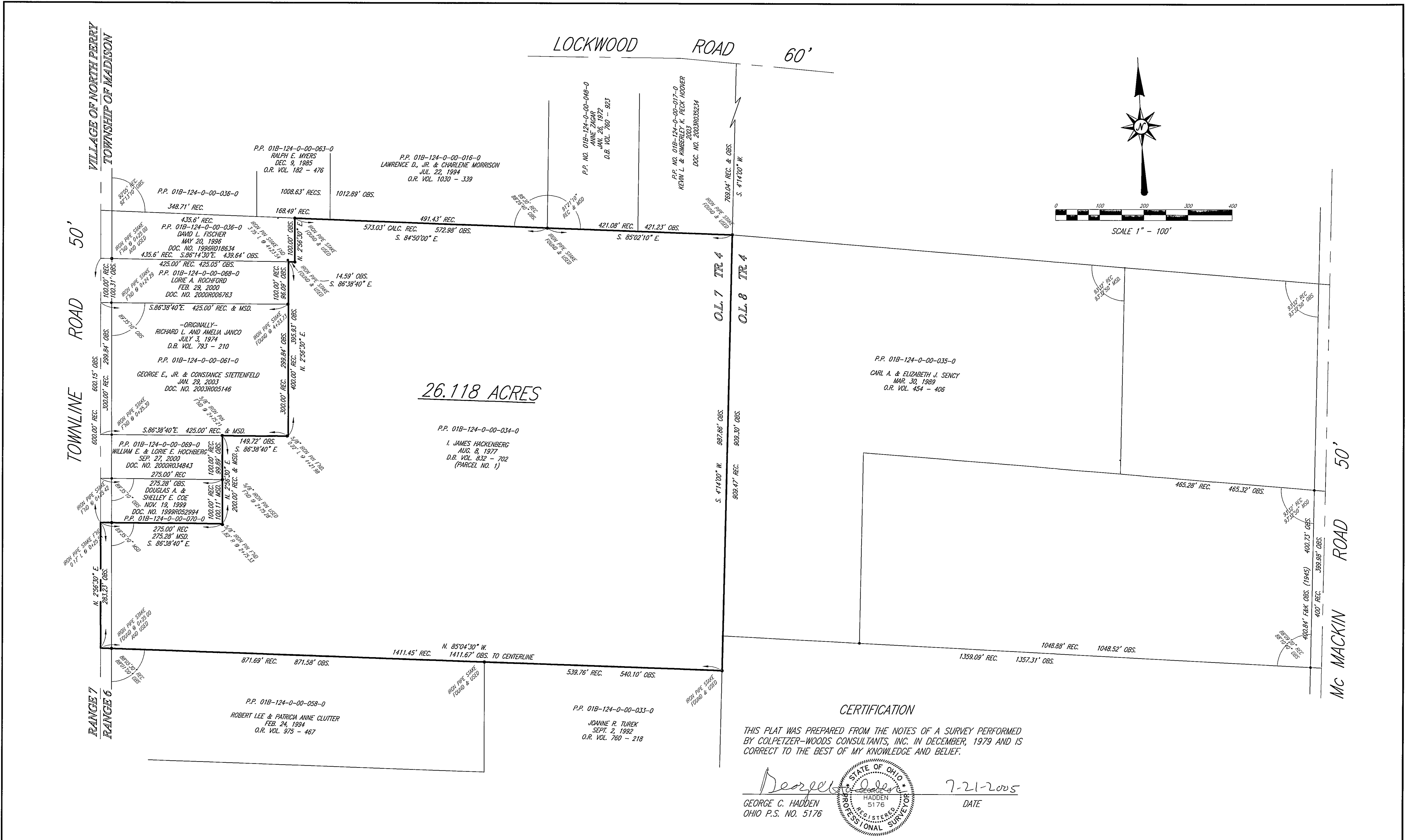
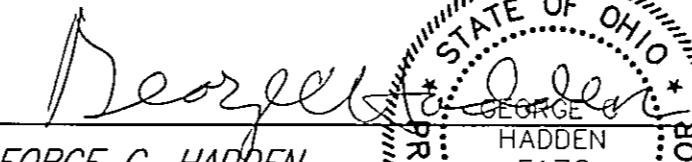


Hadden, unprinted file H:\0005000500\REV\178147\Survey\72121.ctb, Layout 1, P.1 on 7/21/2005 at 8:40:46 AM




CERTIFICATION

THIS PLAT WAS PREPARED FROM THE NOTES OF A SURVEY PERFORMED BY COLPETZER-WOODS CONSULTANTS, INC. IN DECEMBER, 1979 AND IS CORRECT TO THE BEST OF MY KNOWLEDGE AND BELIEF.


 GEORGE C. HADDEN
 OHIO P.S. NO. 5176

7-21-2005
 DATE



CT Consultants
 engineers | architects | planners
 35000 Kaiser Court Willoughby, Ohio 44094
 440.951.9000 www.ctconsultants.com

REV NO.	DESCRIPTION	DATE	BY	CHK'D

DATE JULY, 2005
 DRAWN BY T.P.H.
 CHECKED BY _____
 APPROVED BY G.C.H.
 FB No 387 PG. 34

**PLAT OF SURVEY
 OF REMAINING LANDS OF
 I. JAMES HACKENBERG
 IN ORIGINAL LOT NO. 7, TRACT NO. 4
 MADISON TOWNSHIP, LAKE COUNTY, OHIO**

SCALE	
HOR	1" = 100'
VERT	
CONTRACT NO.	
05285	
SHEET NO.	OF
1	1