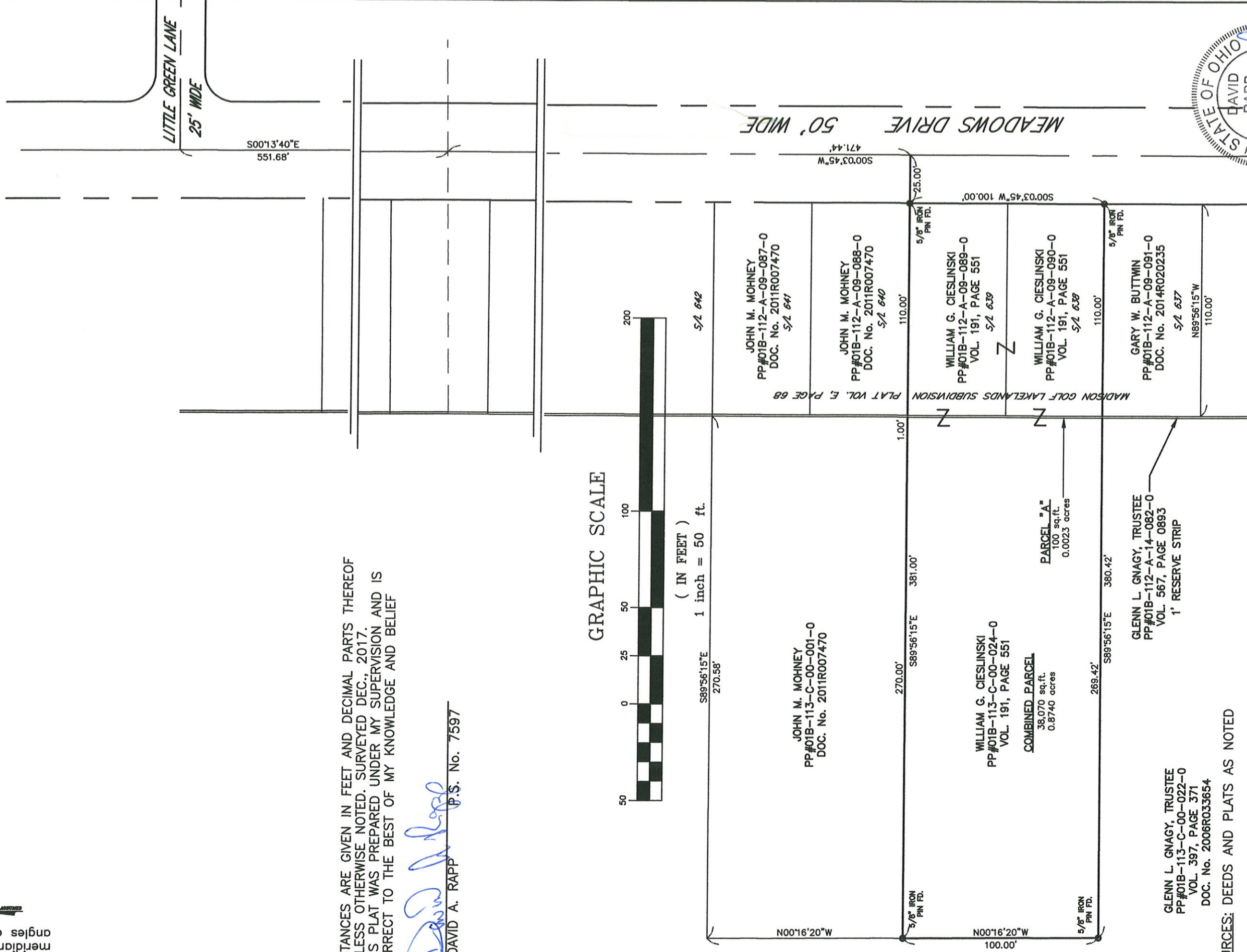


Bearings are to an assumed meridian and are used to denote angles only.

COMBINATION OF 0.0023 ACRES FROM PP#01B-112-A-14-082-0 WITH PP#01B-112-A-09-089-0, PP#01B-112-A-09-090-0 AND PP#01B-113-C-00-024-0 BEING PART OF LOT 1, TRACT 3 IN MADISON TOWNSHIP AND ALSO BEING SUBLOTS 638 AND 639 AND PART OF A 1' RESERVE STRIP AS SHOWN ON MADISON GOLF LAKELANDS SUBDIVISION, PLAT VOLUME E, PAGE 68 LAKE COUNTY AND STATE OF OHIO



DISTANCES ARE GIVEN IN FEET AND DECIMAL PARTS THEREOF UNLESS OTHERWISE NOTED. SURVEYED DEC., 2017. THIS PLAT WAS PREPARED UNDER MY SUPERVISION AND IS CORRECT TO THE BEST OF MY KNOWLEDGE AND BELIEF

David A. Rapp
DAVID A. RAPP
P.S. No. 7597

GRAPHIC SCALE



(IN FEET)
1 inch = 50 ft.

SOURCES: DEEDS AND PLATS AS NOTED

DAVID RAPP SERVICES P.O. BOX 28 GENEVA, OHIO 44041 440-983-1607	DATE: DEC, 2017	37162
	DRAWN BY: DAR	
	CHECKED BY: DAR	1
	APPROVED BY: DAR	1
PS No. 7597		



ALL IRON PINS SET (30" OF LENGTH AND 5/8" DIAMETER) ARE IDENTIFIED BY A PLASTIC CAP BEARING THE IMPRINT "7597"