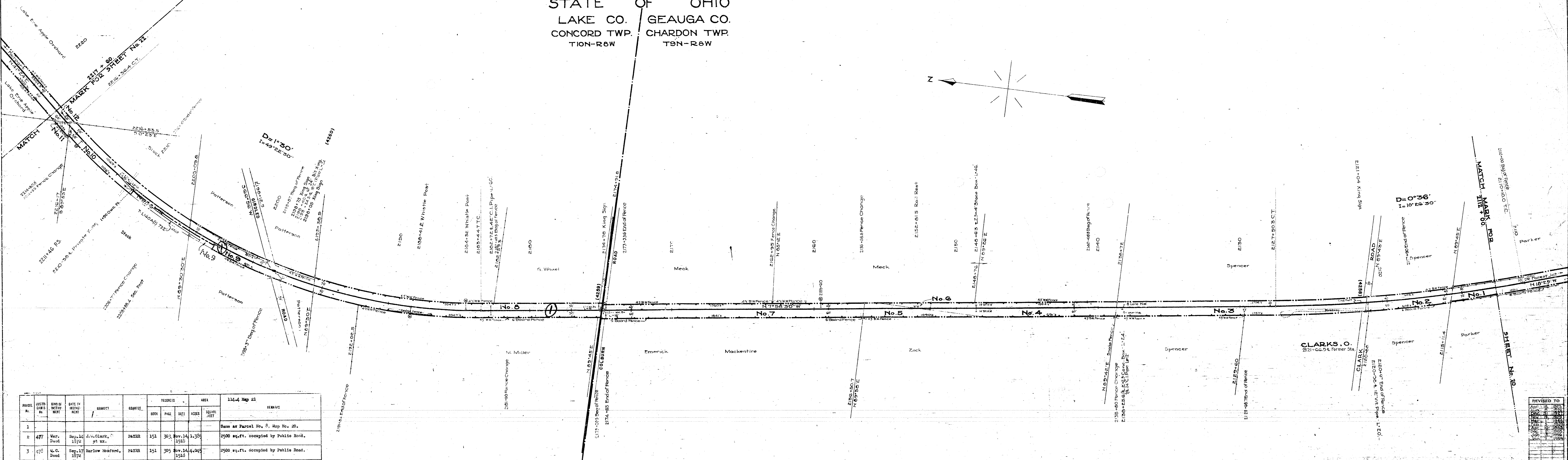
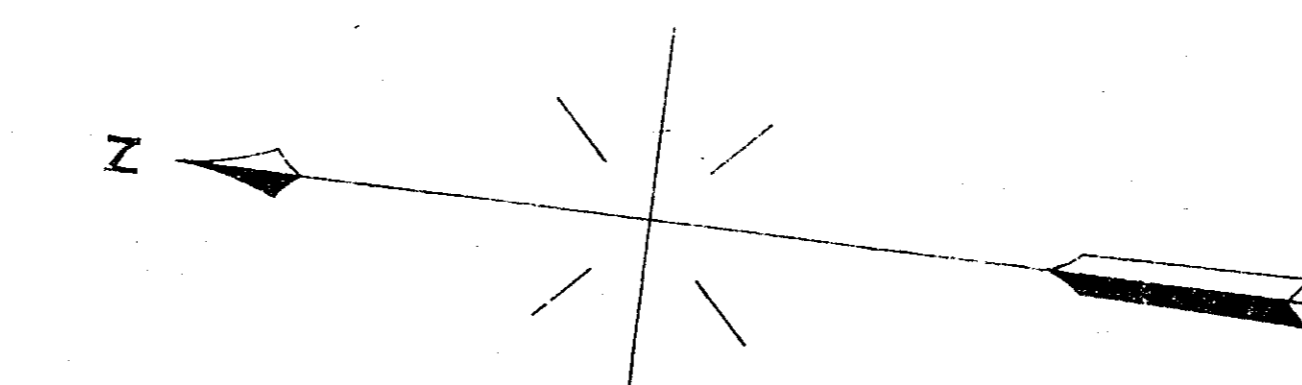


AUTHORITY	DATE INSTALLED OR RETIRED	DESCRIPTION
C. 10861 A.F.E. 13461	Completed June 15, 1925	Extension on Stub End of Track L14002, Sta 2122+85

STATE OF OHIO
LAKE CO. GEauga CO.
CONCORD TWP. CHARDON TWP.
T10N-R6W T9N-R6W



PARCEL NO.	CUST. OR GRANTEE	KIND OF INSTRUMENT	DATE OF INSTRUMENT	GRANTOR	GRANTEE	RECORDED		AREA		REMARKS
						BOOK	PAGE	ACRES	SQUARE FEET	
1										Same as Parcel No. 8, Map No. 20.
2	477	War. Deed	Sep. 14 1872	J.W. Clark, et ux.	PAYER	151	303	Nov. 14 1910	1.388	2500 sq.ft. occupied by Public Road.
3	478	War. Deed	Sep. 17 1872	Harlow Harford,	PAYER	151	305	Nov. 14 1910	4.045	2500 sq.ft. occupied by Public Road.
4	479	War. Deed	Sep. 21 1872	Julius Babby, et ux.	PAYER	151	307	Nov. 15 1910	2.766	
5	480	War. Deed	Sep. 17 1872	Uriah Coman,	PAYER	151	309	Nov. 15 1910	1.075	
6									9000	2500 sq.ft. occupied by Public Road.
7	481	War. Deed	Sep. 18 1872	Risa A. Baker, et ux.	PAYER	151	311	Nov. 15 1910	4.224	
8	482	War. Deed	Sep. 18 1872	Risa A. Baker, et ux.	PAYER	7	432	Aug. 23 1877	4.704	2500 sq.ft. occupied by Public Road.
9	483	War. Deed	Jan. 11 1872	Willis Woodruff, et ux.	PAYER	3	365	Aug. 24 1872	2.09	Instrument also covers Parcel No. 2, Map No. 22. 5000 sq.ft. occupied by Public Road. Orig. Area 5.29 Ac. Sold 6,106 SF Cust. No. 854
10	484	War. Deed	Sep. 22 1872	Daniel Woodruff, et ux.	PAYER	9	541	Jan. 29 1880	2.17	Orig. Area 2.524 Ac. Sold 15,336 SF Sec. Cust. No. 854
11	485	War. Deed	Sep. 13 1872	Jared Theyer	PAYER	7	436	Aug. 23 1877	5.850	
12	486	War. Deed	Sep. 7 1872	James P. Smith, et ux.	PAYER	7	442	Aug. 23 1877	7.56	Same as Parcel No. 1, Map No. 22.

SCHEDULE FOR LAND SALES ETC.

CUST. NO.	KIND OF INSTRUMENT	DATE OF INSTRUMENT	GRANTOR	GRANTEE	RECORDED		AREA		REMARKS
					BOOK	PAGE	ACRES	SQUARE FEET	
854	War. Deed	Oct 6 1973	B&O Railroad	84 Lumber Company					Property Conveyed See Parcels No. 9 & 10

RIGHT-OF-WAY AND TRACK MAP
THE BALTIMORE AND OHIO RAILROAD COMPANY
OPERATED BY
THE BALTIMORE AND OHIO RAILROAD COMPANY
AKRON-CHICAGO DIVISION FAIRPORT BRANCH
STATION 2112+00 TO STATION 2217+60
SCALE: 1 IN. = 200 FT. JUNE 30, 1918
OFFICE OF VALUATION ENGINEER
BALTIMORE, MD.

REVISED TO
APR 1918
MAY 1918
JUN 1918
JUL 1918
AUG 1918
SEP 1918
OCT 1918
NOV 1918
DEC 1918
JAN 1919
FEB 1919
MAR 1919
APR 1919
MAY 1919
JUN 1919
JUL 1919
AUG 1919
SEP 1919
OCT 1919
NOV 1919
DEC 1919
JAN 1920
FEB 1920
MAR 1920
APR 1920
MAY 1920
JUN 1920
JUL 1920
AUG 1920
SEP 1920
OCT 1920
NOV 1920
DEC 1920
JAN 1921
FEB 1921
MAR 1921
APR 1921
MAY 1921
JUN 1921
JUL 1921
AUG 1921
SEP 1921
OCT 1921
NOV 1921
DEC 1921
JAN 1922
FEB 1922
MAR 1922
APR 1922
MAY 1922
JUN 1922
JUL 1922
AUG 1922
SEP 1922
OCT 1922
NOV 1922
DEC 1922
JAN 1923
FEB 1923
MAR 1923
APR 1923
MAY 1923
JUN 1923
JUL 1923
AUG 1923
SEP 1923
OCT 1923
NOV 1923
DEC 1923
JAN 1924
FEB 1924
MAR 1924
APR 1924
MAY 1924
JUN 1924
JUL 1924
AUG 1924
SEP 1924
OCT 1924
NOV 1924
DEC 1924
JAN 1925
FEB 1925
MAR 1925
APR 1925
MAY 1925
JUN 1925
JUL 1925
AUG 1925
SEP 1925
OCT 1925
NOV 1925
DEC 1925
JAN 1926
FEB 1926
MAR 1926
APR 1926
MAY 1926
JUN 1926
JUL 1926
AUG 1926
SEP 1926
OCT 1926
NOV 1926
DEC 1926
JAN 1927
FEB 1927
MAR 1927
APR 1927
MAY 1927
JUN 1927
JUL 1927
AUG 1927
SEP 1927
OCT 1927
NOV 1927
DEC 1927
JAN 1928
FEB 1928
MAR 1928
APR 1928
MAY 1928
JUN 1928
JUL 1928
AUG 1928
SEP 1928
OCT 1928
NOV 1928
DEC 1928
JAN 1929
FEB 1929
MAR 1929
APR 1929
MAY 1929
JUN 1929
JUL 1929
AUG 1929
SEP 1929
OCT 1929
NOV 1929
DEC 1929
JAN 1930
FEB 1930
MAR 1930
APR 1930
MAY 1930
JUN 1930
JUL 1930
AUG 1930
SEP 1930
OCT 1930
NOV 1930
DEC 1930
JAN 1931
FEB 1931
MAR 1931
APR 1931
MAY 1931
JUN 1931
JUL 1931
AUG 1931
SEP 1931
OCT 1931
NOV 1931
DEC 1931
JAN 1932
FEB 1932
MAR 1932
APR 1932
MAY 1932
JUN 1932
JUL 1932
AUG 1932
SEP 1932
OCT 1932
NOV 1932
DEC 1932
JAN 1933
FEB 1933
MAR 1933
APR 1933
MAY 1933
JUN 1933
JUL 1933
AUG 1933
SEP 1933
OCT 1933
NOV 1933
DEC 1933
JAN 1934
FEB 1934
MAR 1934
APR 1934
MAY 1934
JUN 1934
JUL 1934
AUG 1934
SEP 1934
OCT 1934
NOV 1934
DEC 1934
JAN 1935
FEB 1935
MAR 1935
APR 1935
MAY 1935
JUN 1935
JUL 1935
AUG 1935
SEP 1935
OCT 1935
NOV 1935
DEC 1935
JAN 1936
FEB 1936
MAR 1936
APR 1936
MAY 1936
JUN 1936
JUL 1936
AUG 1936
SEP 1936
OCT 1936
NOV 1936
DEC 1936
JAN 1937
FEB 1937
MAR 1937
APR 1937
MAY 1937
JUN 1937
JUL 1937
AUG 1937
SEP 1937
OCT 1937
NOV 1937
DEC 1937
JAN 1938
FEB 1938
MAR 1938
APR 1938
MAY 1938
JUN 1938
JUL 1938
AUG 1938
SEP 1938
OCT 1938
NOV 1938
DEC 1938
JAN 1939
FEB 1939
MAR 1939
APR 1939
MAY 1939
JUN 1939
JUL 1939
AUG 1939
SEP 1939
OCT 1939
NOV 1939
DEC 1939
JAN 1940
FEB 1940
MAR 1940
APR 1940
MAY 1940
JUN 1940
JUL 1940
AUG 1940
SEP 1940
OCT 1940
NOV 1940
DEC 1940
JAN 1941
FEB 1941
MAR 1941
APR 1941
MAY 1941
JUN 1941
JUL 1941
AUG 1941
SEP 1941
OCT 1941
NOV 1941
DEC 1941
JAN 1942
FEB 1942
MAR 1942
APR 1942
MAY 1942
JUN 1942
JUL 1942
AUG 1942
SEP 1942
OCT 1942
NOV 1942
DEC 1942
JAN 1943
FEB 1943
MAR 1943
APR 1943
MAY 1943
JUN 1943
JUL 1943
AUG 1943
SEP 1943
OCT 1943
NOV 1943
DEC 1943
JAN 1944
FEB 1944
MAR 1944
APR 1944
MAY 1944
JUN 1944
JUL 1944
AUG 1944
SEP 1944
OCT 1944
NOV 1944
DEC 1944
JAN 1945
FEB 1945
MAR 1945
APR 1945
MAY 1945
JUN 1945
JUL 1945
AUG 1945
SEP 1945
OCT 1945
NOV 1945
DEC 1945
JAN 1946
FEB 1946
MAR 1946
APR 1946
MAY 1946
JUN 1946
JUL 1946
AUG 1946
SEP 1946
OCT 1946
NOV 1946
DEC 1946
JAN 1947
FEB 1947
MAR 1947
APR 1947
MAY 1947
JUN 1947
JUL 1947
AUG 1947
SEP 1947
OCT 1947
NOV 1947
DEC 1947
JAN 1948
FEB 1948
MAR 1948
APR 1948
MAY 1948
JUN 1948
JUL 1948
AUG 1948
SEP 1948
OCT 1948
NOV 1948
DEC 1948
JAN 1949
FEB 1949
MAR 1949
APR 1949
MAY 1949
JUN 1949
JUL 1949
AUG 1949
SEP 1949
OCT 1949
NOV 1949
DEC 1949
JAN 1950
FEB 1950
MAR 1950
APR 1950
MAY 1950
JUN 1950
JUL 1950
AUG 1950
SEP 1950
OCT 1950
NOV 1950
DEC 1950
JAN 1951
FEB 1951
MAR 1951
APR 1951
MAY 1951
JUN 1951
JUL 1951
AUG 1951
SEP 1951
OCT 1951
NOV 1951
DEC 1951
JAN 1952
FEB 1952
MAR 1952
APR 1952
MAY 1952
JUN 1952
JUL 1952
AUG 1952
SEP 1952
OCT 1952
NOV 1952
DEC 1952
JAN 1953
FEB 1953
MAR 1953
APR 1953
MAY 1953
JUN 1953
JUL 1953
AUG 1953
SEP 1953
OCT 1953
NOV 1953
DEC 1953
JAN 1954
FEB 1954
MAR 1954
APR 1954
MAY 1954
JUN 1954
JUL 1954
AUG 1954
SEP 1954
OCT 1954
NOV 1954
DEC 1954
JAN 1955
FEB 1955
MAR 1955
APR 1955
MAY 1955
JUN 1955
JUL 1955
AUG 1955
SEP 1955
OCT 1955
NOV 1955
DEC 1955
JAN 1956
FEB 1956
MAR 1956
APR 1956
MAY 1956
JUN 1956
JUL 1956
AUG 1956
SEP 1956
OCT 1956
NOV 1956
DEC 1956
JAN 1957
FEB 1957
MAR 1957
APR 1957
MAY 1957
JUN 1957
JUL 1957
AUG 1957
SEP 1957
OCT 1957
NOV 1957
DEC 1957
JAN 1958
FEB 1958
MAR 1958
APR 1958
MAY 1958
JUN 1958
JUL 1958
AUG 1958
SEP 1958
OCT 1958
NOV 1958
DEC 1958
JAN 1959
FEB 1959
MAR 1959
APR 1959
MAY 1959
JUN 1959
JUL 1959
AUG 1959
SEP 1959
OCT 1959
NOV 1959
DEC 1959
JAN 1960
FEB 1960
MAR 1960
APR 1960
MAY 1960
JUN 1960
JUL 1960
AUG 1960
SEP 1960
OCT 1960
NOV 1960
DEC 1960
JAN 1961
FEB 1961
MAR 1961
APR 1961
MAY 1961
JUN 1961
JUL 1961
AUG 1961
SEP 1961
OCT 1961
NOV 1961
DEC 1961
JAN 1962
FEB 1962
MAR 1962
APR 1962
MAY 1962
JUN 1962
JUL 1962
AUG 1962
SEP 1962
OCT 1962
NOV 1962
DEC 1962
JAN 1963
FEB 1963
MAR 1963
APR 1963
MAY 1963
JUN 1963
JUL 1963
AUG 1963
SEP 1963
OCT 1963
NOV 1963
DEC 1963
JAN 1964
FEB 1964
MAR 1964
APR 1964
MAY 1964
JUN 1964
JUL 1964
AUG 1964
SEP 1964
OCT 1964
NOV 1964
DEC 1964
JAN 1965
FEB 1965
MAR 1965
APR 1965
MAY 1965
JUN 1965
JUL 1965
AUG 1965
SEP 1965
OCT 1965
NOV 1965
DEC 1965
JAN 1966
FEB 1966
MAR 1966
APR 1966
MAY 1966
JUN 1966
JUL 1966
AUG 1966
SEP 1966
OCT 1966
NOV 1966
DEC 1966
JAN 1967
FEB 1967
MAR 1967
APR 1967
MAY 1967
JUN 1967
JUL 1967
AUG 1967
SEP 1967
OCT 1967
NOV 1967
DEC 1967
JAN 1968
FEB 1968
MAR 1968
APR 1968