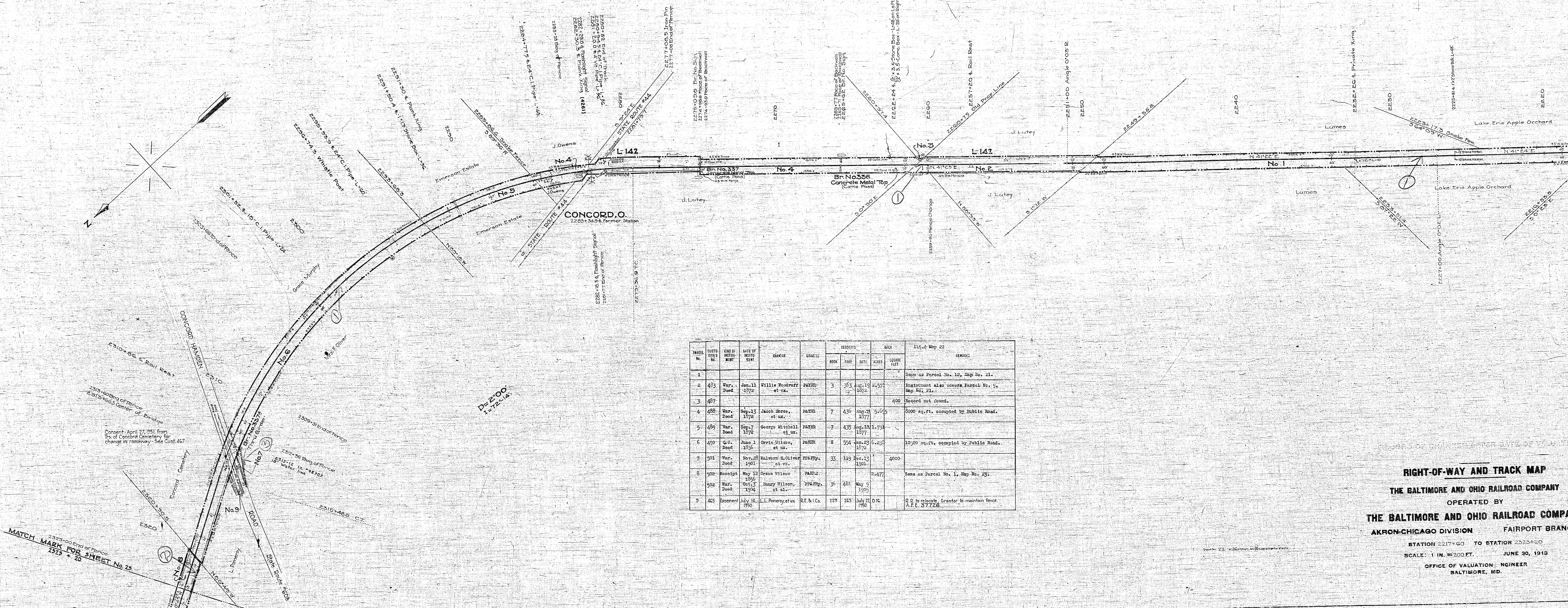


AUTHORITY	DATE INSTALLED OR RETIRED	DESCRIPTION
C-23294 A.F.E. 6282	Installed Aug. 23, 1923	Construction of 215' extension to track L142 (3) by moving original turnout west. PS now at sta. 2276+02.6, and new L480.
C-31016 A.F.E. 13484	Completed Aug. 5, 1924	Retirement of Bridge #335. Sta. 2223+65.3.
C-35763 A.F.E. 17656	Completed Sept. 5, 1930	Installation of Flashlight Hwy. Xing Signals, sta. 2282+18.5; see also Maps 5 and 18.

CONTINUED ON TYPED LIST.

LAKE CO., OHIO
CONCORD TWP.
TION-R&W



PARCEL No.	CUSTO-DIEN No.	KIND OF INTEREST	DATE OF INSTRUMENT	GRANTOR	GRANTEE	RECORDS			AREA	REMARKS
						BOOK	PAGE	DATE		
1									114, 4 May 22	
2	483	War. Deed	Jan. 11 1872	Willie Woodruff et ux.	PAYEE	3	263	2-19 1872	2,577	Same as Parcel No. 12, Map No. 21.
3	487								400	Record not found.
4	488	War. Deed	Aug. 13 1872	Jacob Hesse et ux.	PAYEE	7	436	Aug. 23 1877	5,605	8000 sq. ft. occupied by Public Road.
5	489	War. Deed	Sept. 7 1872	George Mitchell et ux.	PAYEE	7	435	Aug. 23 1877	1,793	
6	490	W.C. Deed	June 1 1872	Orrin Wilson et ux.	PAYEE	4	554	Jan. 23 1872	6,252	10,000 sq. ft. occupied by Public Road.
7	501	War. Deed	Nov. 29 1901	Malvern H. Oliver et ux.	PAYEE	33	119	Dec. 13 1901	4000	
8	502	Receipt	May 12 1895	Oron Wilson	PAYEE				2,477	Same as Parcel No. 1, Map No. 23.
9	502	War. Deed	Oct. 5 1894	Honey Wilson et al.	PAYEE	36	481	May 9 1895		
9	463	Easement	July 14 1890	L.L. Penney et ux.	R.F. & Co.	729	263	July 22 1890	0.16	R.F. to release Grantor to maintain fence A.F.E. 37726.

RIGHT-OF-WAY AND TRACK MAP
THE BALTIMORE AND OHIO RAILROAD COMPANY
 OPERATED BY
THE BALTIMORE AND OHIO RAILROAD COMPANY
 AKRON-CHICAGO DIVISION FAIRPORT BRANCH
 STATION 2217+60 TO STATION 2323+20
 SCALE: 1 IN. = 200 FT. JUNE 30, 1919
 OFFICE OF VALUATION ENGINEER
 BALTIMORE, MD.

REVISED TO
Apr. 15, 1922
Apr. 31, 1927
Nov. 19, 1927
Nov. 1, 1928
Apr. 10, 1936
Jan. 8, 1936
Jan. 1, 1937
Jan. 1, 1938
Jan. 1, 1939
Jan. 1, 1940
Jan. 1, 1941
Jan. 1, 1942
Jan. 1, 1943
Jan. 1, 1944
Jan. 1, 1945
Jan. 1, 1946
Jan. 1, 1947
Jan. 1, 1948
Jan. 1, 1949
Jan. 1, 1950
Jan. 1, 1951
Jan. 1, 1952
Jan. 1, 1953
Jan. 1, 1954
Jan. 1, 1955
Jan. 1, 1956
Jan. 1, 1957
Jan. 1, 1958
Jan. 1, 1959
Jan. 1, 1960
Jan. 1, 1961
Jan. 1, 1962
Jan. 1, 1963
Jan. 1, 1964
Jan. 1, 1965
Jan. 1, 1966
Jan. 1, 1967
Jan. 1, 1968
Jan. 1, 1969
Jan. 1, 1970
Jan. 1, 1971
Jan. 1, 1972
Jan. 1, 1973
Jan. 1, 1974
Jan. 1, 1975
Jan. 1, 1976
Jan. 1, 1977
Jan. 1, 1978
Jan. 1, 1979
Jan. 1, 1980
Jan. 1, 1981
Jan. 1, 1982
Jan. 1, 1983
Jan. 1, 1984
Jan. 1, 1985
Jan. 1, 1986
Jan. 1, 1987
Jan. 1, 1988
Jan. 1, 1989
Jan. 1, 1990
Jan. 1, 1991
Jan. 1, 1992
Jan. 1, 1993
Jan. 1, 1994
Jan. 1, 1995
Jan. 1, 1996
Jan. 1, 1997
Jan. 1, 1998
Jan. 1, 1999
Jan. 1, 2000
Jan. 1, 2001
Jan. 1, 2002
Jan. 1, 2003
Jan. 1, 2004
Jan. 1, 2005
Jan. 1, 2006
Jan. 1, 2007
Jan. 1, 2008
Jan. 1, 2009
Jan. 1, 2010
Jan. 1, 2011
Jan. 1, 2012
Jan. 1, 2013
Jan. 1, 2014
Jan. 1, 2015
Jan. 1, 2016
Jan. 1, 2017
Jan. 1, 2018
Jan. 1, 2019
Jan. 1, 2020
Jan. 1, 2021
Jan. 1, 2022