

34A-13B-13

LOT SPLIT

for MESCHINO FATICA

KNOWN AS BEING S/L 65 AND PART OF S/L 64 AND S/L 66 IN
THE CAMPERS ALLOTMENT AS RECORDED IN VOLUME C PAGE 36
OF LAKE COUNTY PLAT RECORDS. SITUATED IN.....

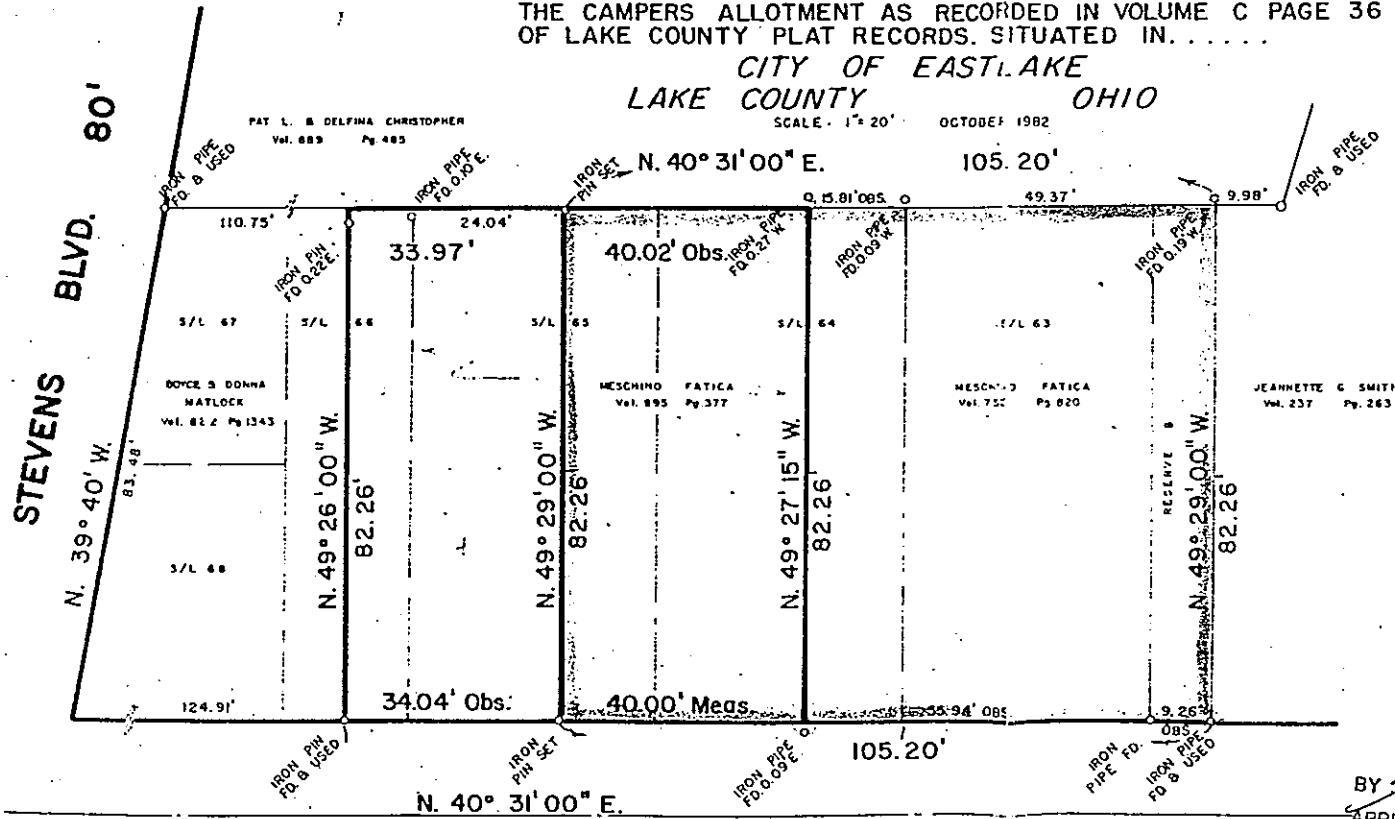
CITY OF EASTLAKE
LAKE COUNTY OHIO

SCALE 1" = 20' OCTOBER 1982

FINAL APPROVAL

BURGESS & NIPLÉ, LIMITED

Date 10/19/82 By DMS



DATE 11-10-00 JFT
 BY ST. JOHNS ENGINEERS, INC.
 Yard and Parking
 Gravel and Driveway
 Other Lot Split

CERTIFICATION

I HEREBY CERTIFY THAT THIS
PLAT IS CORRECT TO THE BEST OF
MY KNOWLEDGE.

William J. Haas
WILLIAM J. HAAS
PLANNING COMMISSION REG. NO. 4793

APPROVED

Eastlake

PLANNING COMMISSION

BY [Signature]
APPROVAL FOR 1 YR. FROM 11/14/00

Planning Commission approval of this
lot split does not guarantee or
imply approval of the Lake County
General Health District.

CAMPERS DRIVE 30'

WM. R. GRAY ASSOC., INC.

CIVIL ENGINEERS SURVEYORS
MENTOR OHIO