

NATIONAL SURVEY SERVICE, Inc.

CIVIL ENGINEERS AND SURVEYORS

350 LEADER BLDG CLEVELAND, O

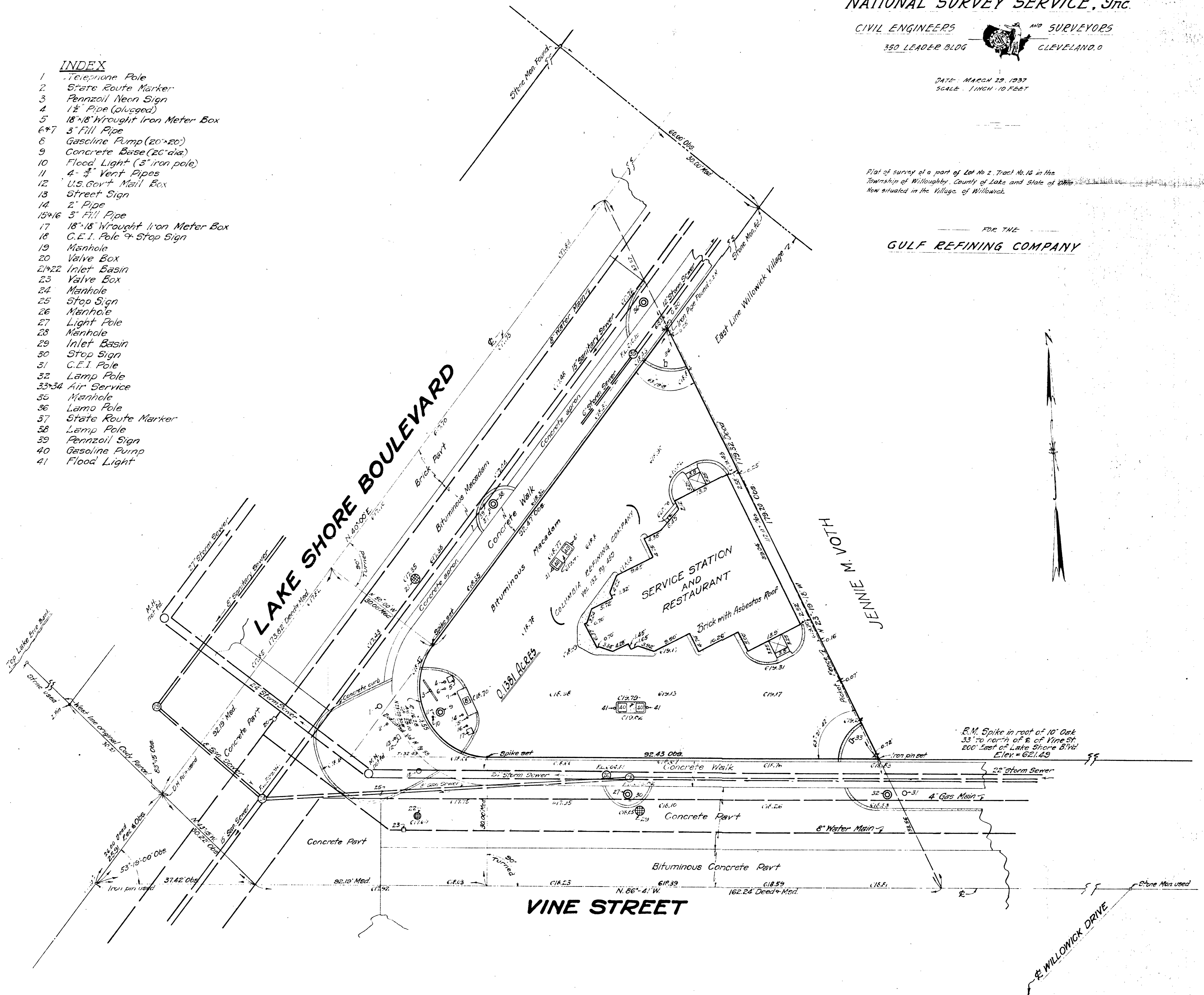
DATE: MARCH 29, 1937
SCALE: 1 INCH = 10 FEET

Plat of survey of a part of Lot No. 2, Tract No. 16 in the Township of Willoughby, County of Lake and State of Ohio, now situated in the Village of Willowick.

FOR THE
GULF REFINING COMPANY

INDEX

- 1 Telephone Pole
- 2 State Route Marker
- 3 Pennzoil Neon Sign
- 4 1 1/2" Pipe (plugged)
- 5 18"x18" Wrought Iron Meter Box
- 6*7 3" Fill Pipe
- 6 Gasline Pump (20"x20")
- 9 Concrete Base (20" dia)
- 10 Flood Light (3" iron pole)
- 11 4- 3/4" Vent Pipes
- 12 U.S. Gov't Mail Box
- 13 Street Sign
- 14 2" Pipe
- 15*16 3" Fill Pipe
- 17 18"x18" Wrought Iron Meter Box
- 18 C.E.I. Pole & Stop Sign
- 19 Manhole
- 20 Valve Box
- 21*22 Inlet Basin
- 23 Valve Box
- 24 Manhole
- 25 Stop Sign
- 26 Manhole
- 27 Light Pole
- 28 Manhole
- 29 Inlet Basin
- 30 Stop Sign
- 31 C.E.I. Pole
- 32 Lamp Pole
- 33*34 Air Service
- 35 Manhole
- 36 Lamp Pole
- 37 State Route Marker
- 38 Lamp Pole
- 39 Pennzoil Sign
- 40 Gasoline Pump
- 41 Flood Light



B.M. Spike in root of 10' Oak
33' to north of E. of Vine St.
200' East of Lake Shore Blvd
Elev. = 621.49