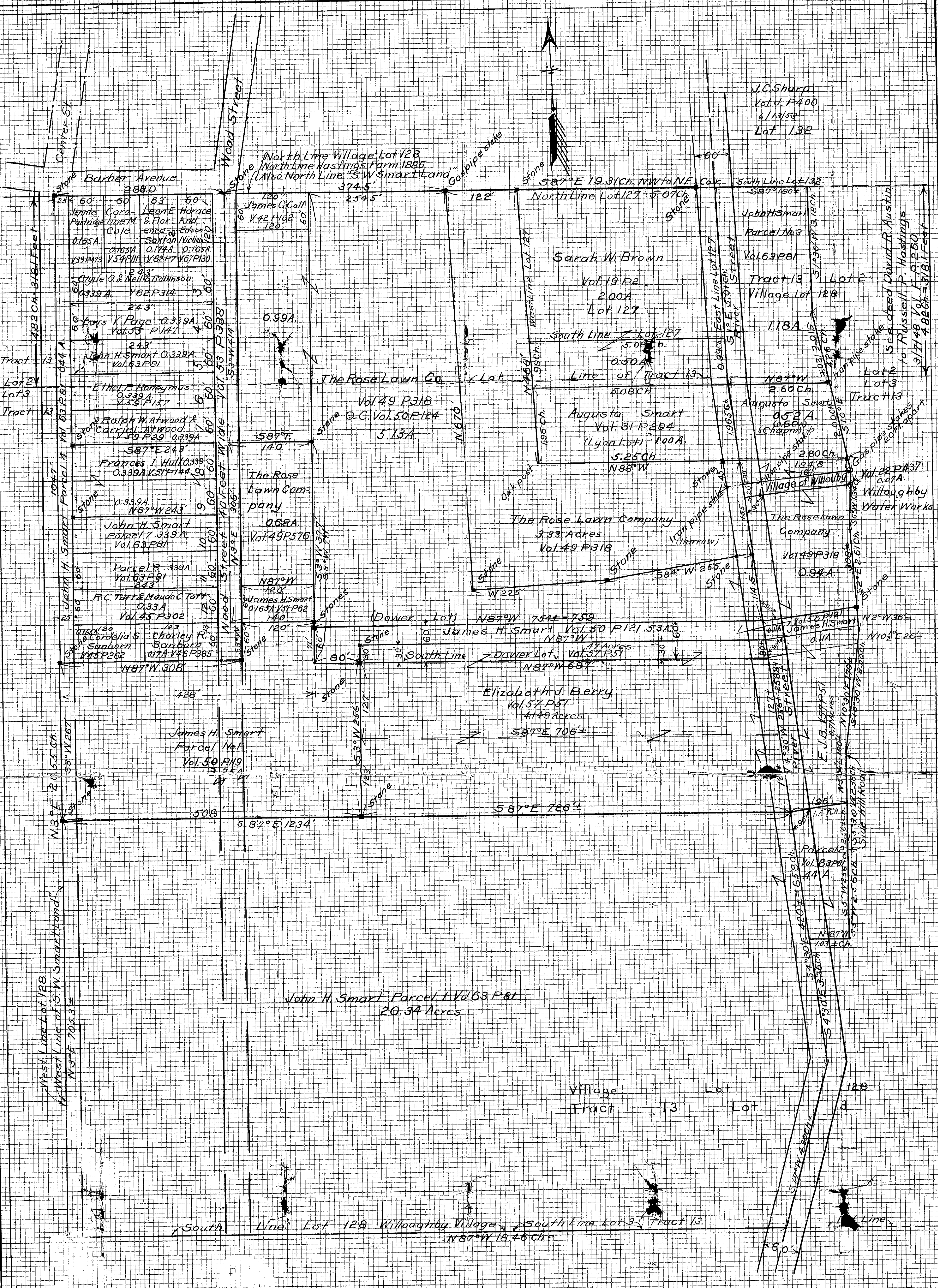


MISSOURI CLOSURE SECTION 10 X 10 - 1 INCH

MISSOURI CLOSURE SECTION 10 X 10 - 1 INCH



Plat of Survey of the Part of Lot 128
of Original Plat of the Village of Willoughby,
Lake County Ohio- owned by S.W. Smart in
April 1902, including divisions there of since
as shown by the Records of Deeds.
Scale: 1 Inch = 30 Feet.
J. J. Ward, Surveyor
June 1913.