

MAP OF SURVEY

FOR

THE OAKWOOD CLUB, GEORGE M. HUMPHREY
AND LOUISE H. INGALLS

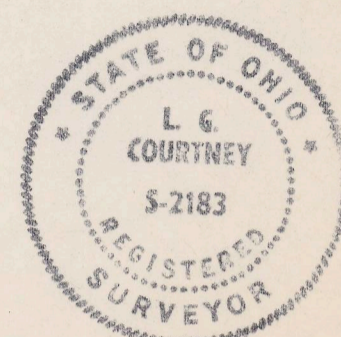
BEING PART OF ORIGINAL KIRTLAND TOWNSHIP LOTS NO.S 33, 34, 48 & 49,
TRACT 1 AND LOT NO. 20, TRACT 2

THE C. W. COURTNEY ENGINEERING COMPANY

SCALE: 1" = 200'

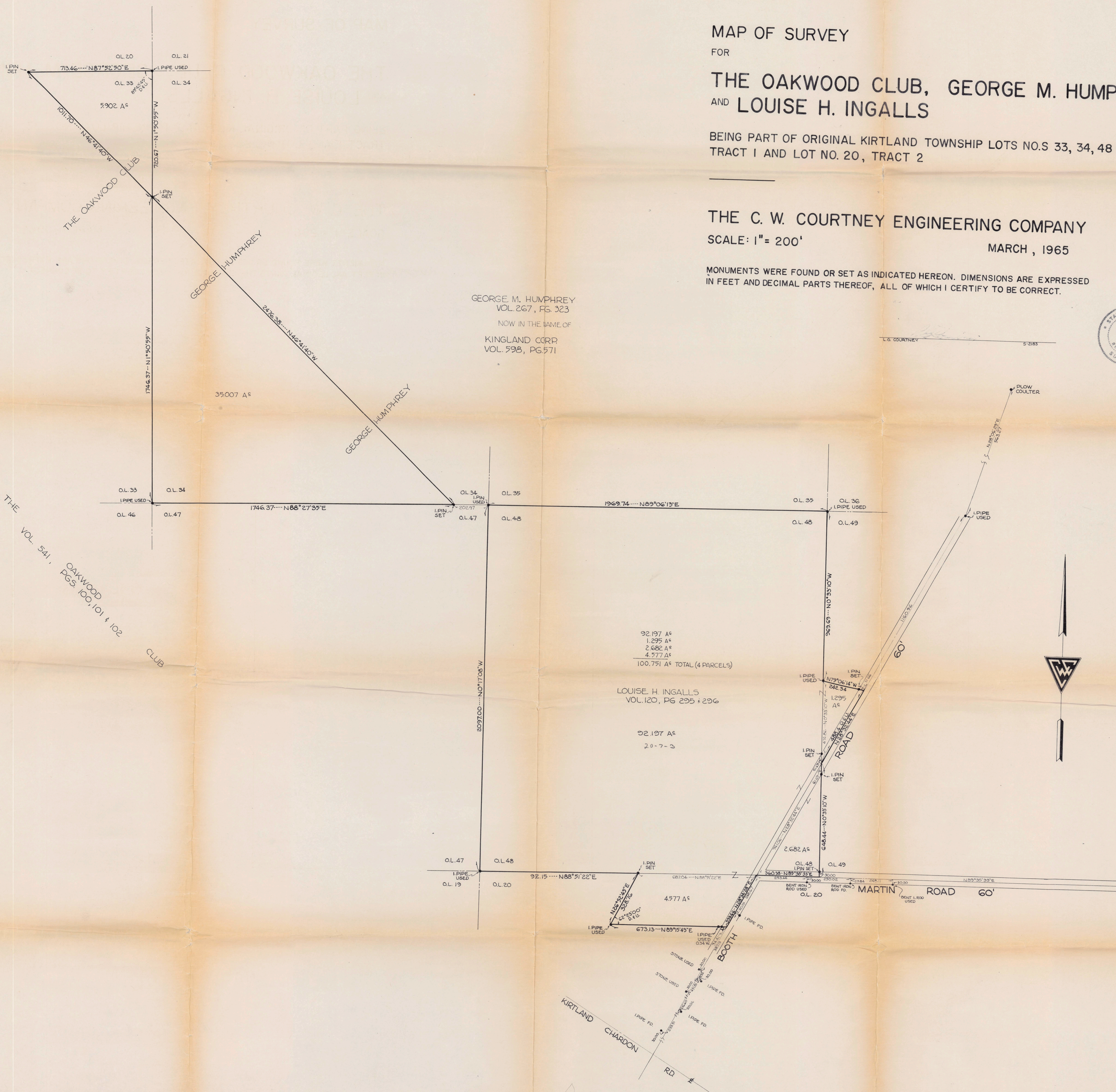
MARCH, 1965

MONUMENTS WERE FOUND OR SET AS INDICATED HEREON. DIMENSIONS ARE EXPRESSED
IN FEET AND DECIMAL PARTS THEREOF, ALL OF WHICH I CERTIFY TO BE CORRECT.



L. C. COURTNEY 5-2183

GEORGE M. HUMPHREY
VOL. 267, PG. 323
NOW IN THE NAME OF
KINGLAND CORP
VOL. 598, PG. 571



THE VOL. 541, OAKWOOD
PGs. 100, 101 & 102
CLUB

92.197 A±
1.295 A±
2.682 A±
4.577 A±
100.751 A± TOTAL (4 PARCELS)

LOUISE H. INGALLS
VOL. 120, PG. 295 & 296

92.197 A±
20-7-3

2.682 A±

4.577 A±

673.13

2.682 A±

2.682 A±

2.682 A±

2.682 A±

2.682 A±