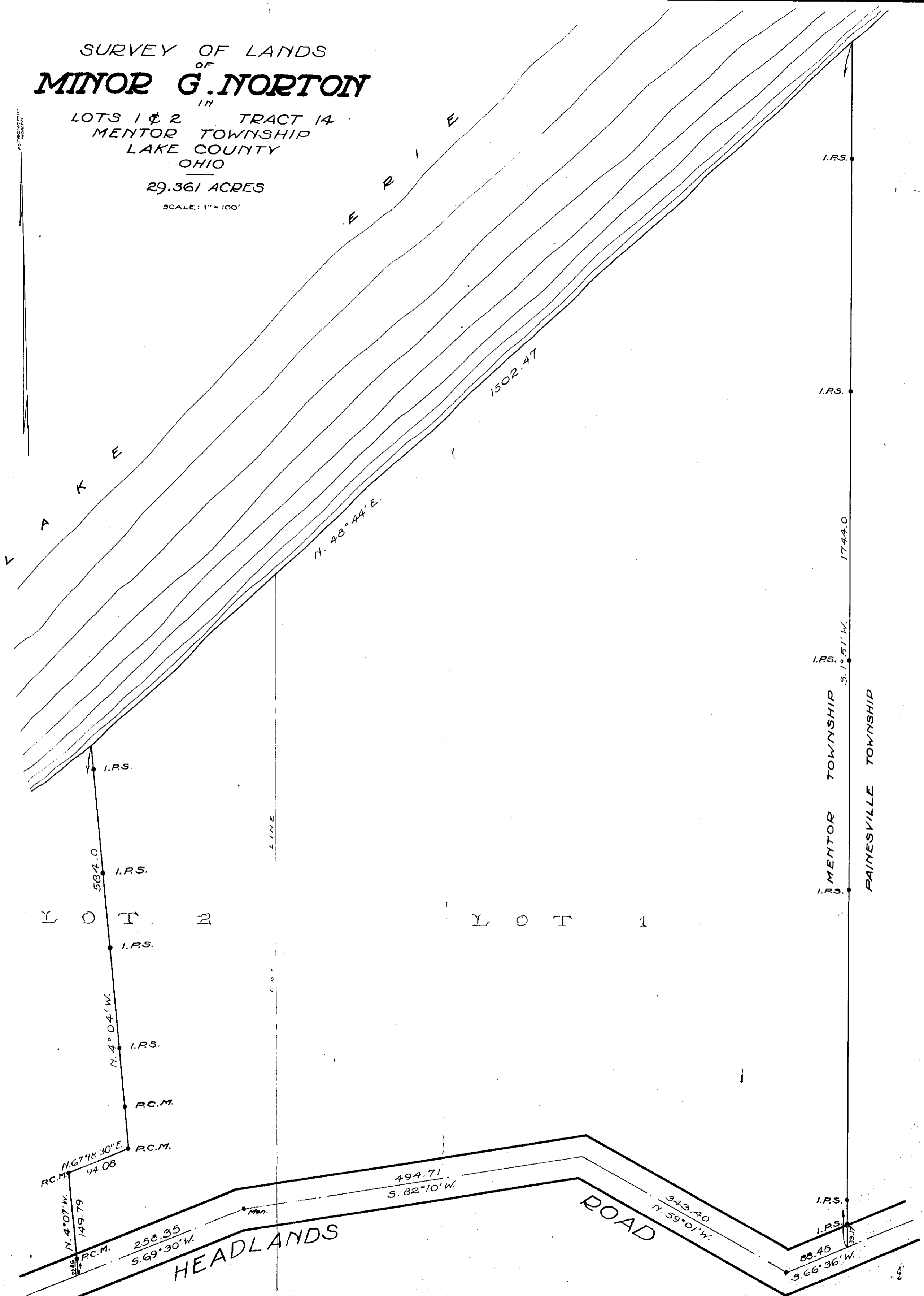


SURVEY OF LANDS
OF
MINOR G. NORTON

IN
LOTS 1 & 2 TRACT 14
MENTOR TOWNSHIP
LAKE COUNTY
OHIO

29.361 ACRES

SCALE: 1"=100'



Bearings shown are referred to a True Meridian, determined by a series of observations on Polaris.

CRABBS & FULLERTON ENGINEERS
PAINESVILLE, OHIO JULY, 1930

NOTE
P.C.M. indicates Painesville City Monument.
I.P.S. indicates Iron Pipe Set.