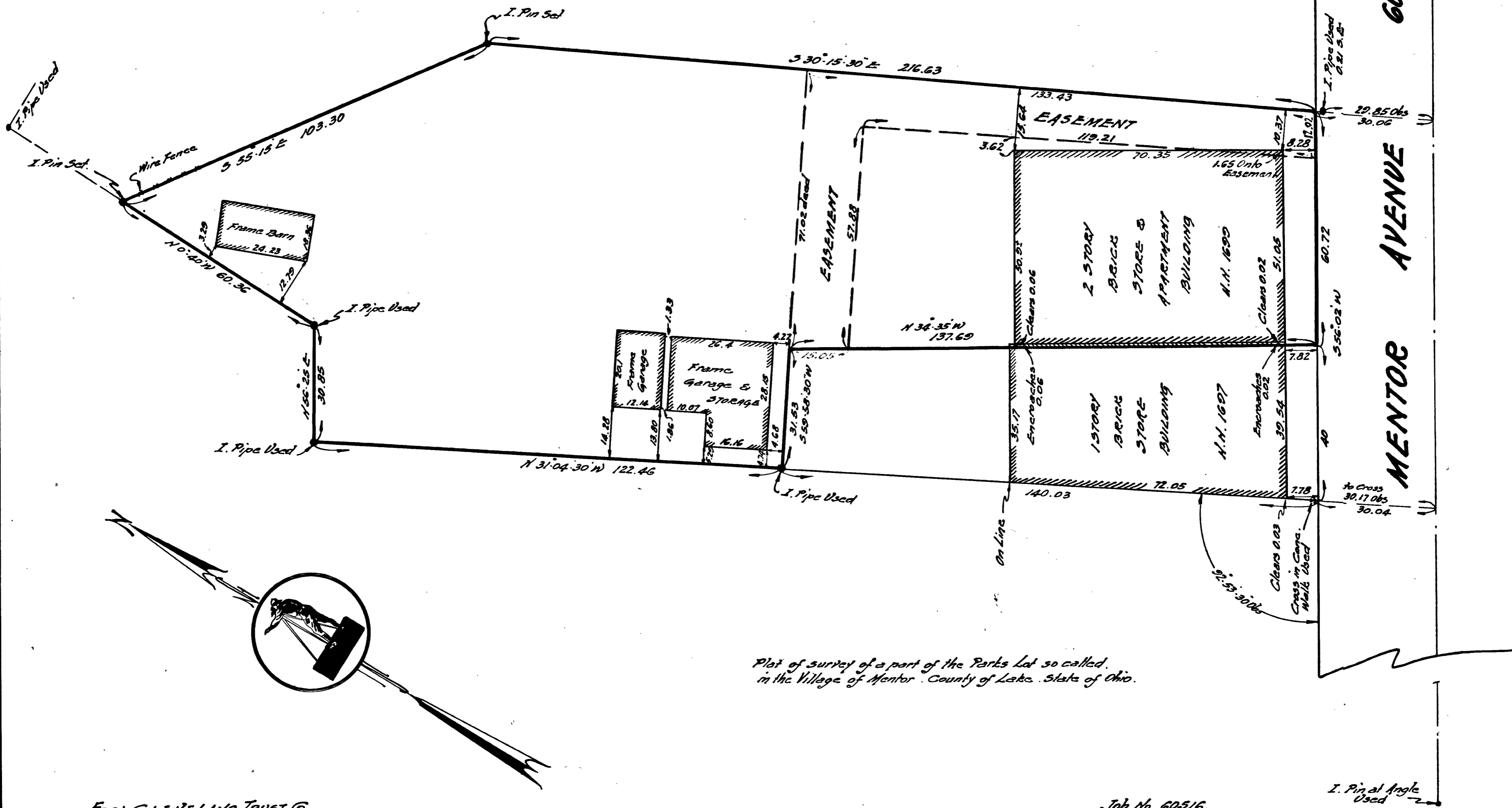


NATIONAL SURVEY SERVICE, Inc.
 CIVIL ENGINEERS & SURVEYORS
 350 LEADER BLDG - CLEVELAND, OHIO.

DATE: MAY 28, 1935
 SCALE: 1 INCH = 20 FEET



Plat of survey of a part of the Parks Lot so called, in the Village of Mentor, County of Lake, State of Ohio.

For: CLEVELAND TRUST CO.

Job No. 60516.

I. Pin at Angle Used