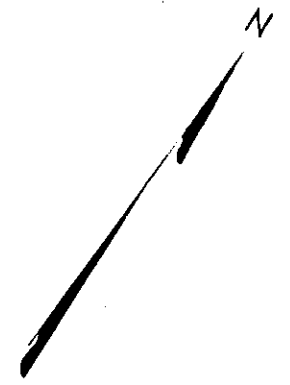
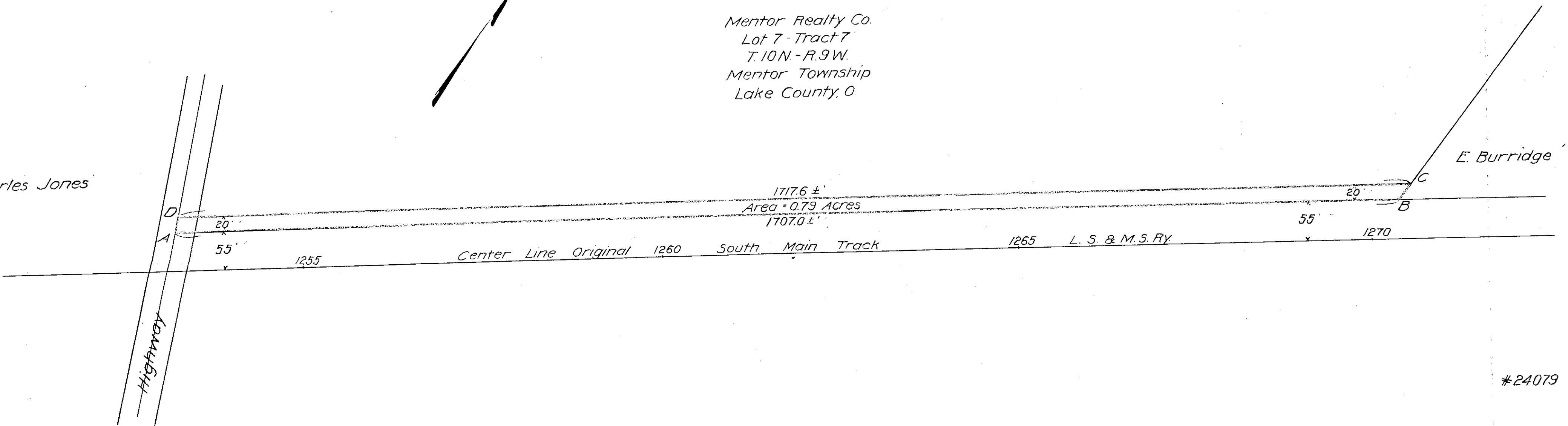


Mentor Realty Co.
 Lot 7 - Tract 7
 T. 10 N. - R. 9 W.
 Mentor Township
 Lake County, O



Charles Jones



#24079

L.S. & M.S. Ry.	Engr. Dept.	S. Rockwell, C.E.
Land conveyed by		
Mentor Realty Co.		
1.2 miles E. of Mentor, O		
Scale 1" = 100'	Sept 14 1909	24079-17-D-19