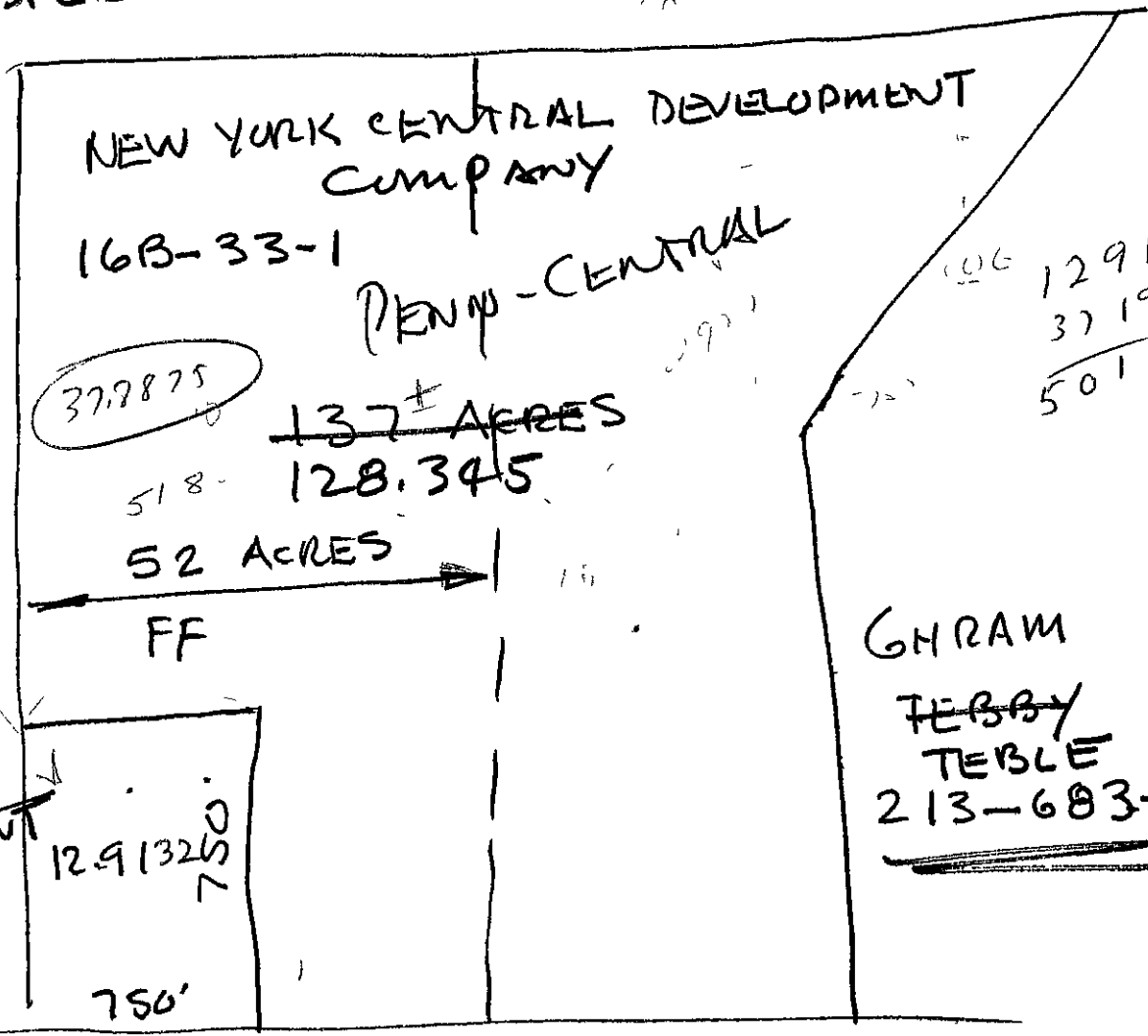


JERRY RINCE
TRANSFER OFFICE



TYLER BLVD

	INITIAL	RESIDUE 52 ACRES	12.91 ACRES + 750 FF	RESIDUE
FF				
ACRAGE				

TOTAL 126,511.64

ASSESSMENT CALCULATIONS

FF. $1248' \times 39.88 = 49,770.24$

ACRAGE $128.345 AC \times 440 = 56,471.80$

$(106,242.04$
 $\times 119.078\%$
 $\$126,511.64$