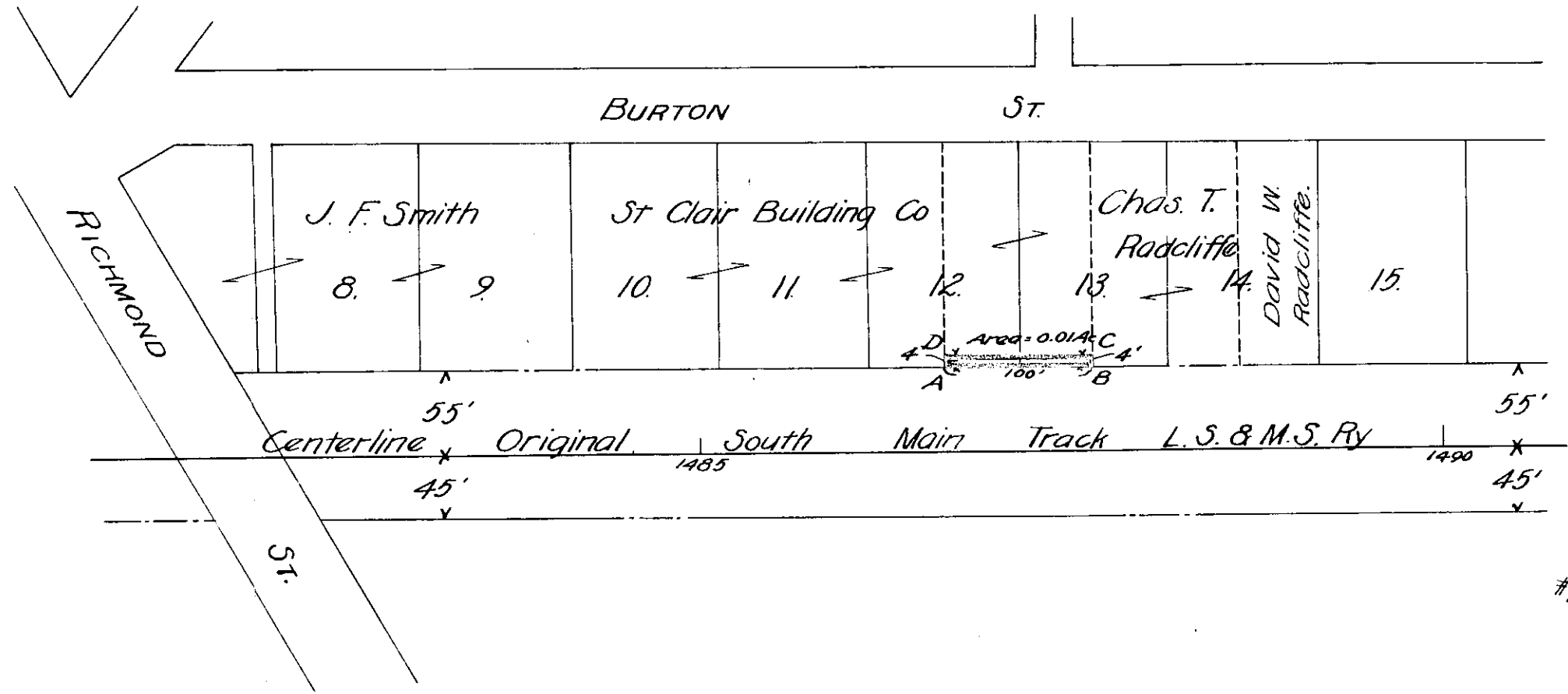
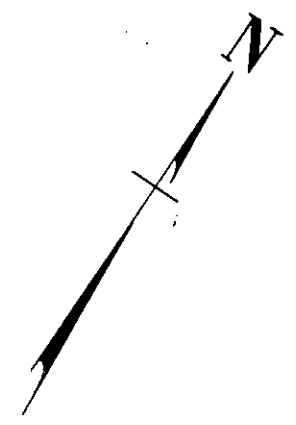


The Commercial Electric Co.  
 Lots 12 & 13, Geauga Plat.  
 Tract 3, T11-R8.  
 Painesville Twp.  
 Lake Co., Ohio.



#25817

Land conveyed marked ABCD-A.

Revised 11/25/11

L.S. & M.S. Ry	Engr. Dept.	S. Rockwell, C.E. G.S.B.
Land conveyed by		
THE COMMERCIAL ELECTRIC CO		
0.6 mi. W. of Painesville, Ohio.		
Scale 1" = 100'	Sept 23, 1910.	25817-17-D-22